

STUDY UK VIRTUAL FAIR Pakistan, Nepal, Bangladesh & Sri Lanka

19 February 2022, 09:00 - 13:00 UKT
PROFILES: Participating Institutions





ASTON UNIVERSITY



Aston University is the winner of the 2020 University of the Year in the UK award by the Guardian. We offer degrees in areas such as Biosciences, Business, Engineering and Technology, Informatics and Digital Engineering, Infrastructure and Sustainable Engineering, International Relations, Languages, Optometry, Pharmacy, Politics, Psychology, and Social Sciences. We are known as an enterprising university and our students work with real life projects. Our focus on career development and work placements sets us apart from other universities. Students from over 120 countries choose to study at Aston - a safe and friendly campus enjoyed by a global, multicultural community. To find out more please visit www.aston.ac.uk



BRUNEL UNIVERSITY LONDON



Located 15 minutes away from Heathrow Airport, Brunel University London is based in Uxbridge, which is on the London Underground network, bringing you into central London within 45 minutes. Our safe, single campus in London is home to over 2,500 international students from more than 110 countries. At Brunel, we encourage you to apply what you learn to real-life situations, giving you an in-depth understanding of theory and how it can be used day to day. Coming to university is not just about getting a degree; it's about helping you excel in your career. Our [Professional Development Centre](#) offers you a range of services. To find out more please visit <https://www.brunel.ac.uk>



CARDIFF UNIVERSITY



Cardiff University combines a prestigious heritage with impressive modern facilities, on one of the most beautiful campuses in the UK*. As part of the Russell Group, our students benefit from our outstanding research quality and reputation, while enjoying a wide variety of courses that can be tailored to any aspirations. We are home to award-winning academics, including 2 Nobel Prize winners and our international community is active and welcoming, with students from more than 130 countries. Cardiff is a friendly, safe and diverse city. Breath-taking beaches, national parks and mountains are all easily accessible and you'll find a vibrant cultural community as well as great shopping, world-class sporting events and an exciting food scene. There are activities and adventures for everyone to enjoy. To find out more please visit <https://www.cardiff.ac.uk/>



DURHAM UNIVERSITY

Founded in 1832, Durham University is distinctive - a residential collegiate university with long traditions and modern values. We seek the highest distinction in research and scholarship and are committed to excellence in all aspects of education and transmission of knowledge. Our research and scholarship affect every continent. We are proud to be an international scholarly community which reflects the ambitions of cultures from around the world. We promote individual participation, providing a rounded education in which students, staff and alumni gain both the academic and the personal skills required to flourish. To find out more please visit www.dur.ac.uk



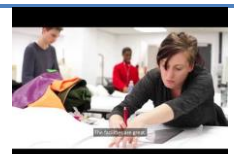
LANCASTER UNIVERSITY



Lancaster University is among the best in the UK. A top 15 university in the three major UK league tables, we are also highly ranked in international league tables such as the QS World Rankings. Our beautiful green campus sits on a 560 acre site in the heart of the North West of England where we teach a wide portfolio of subjects in our state of the art teaching space. To find out more please visit <https://www.lancaster.ac.uk/>



MANCHESTER METROPOLITAN UNIVERSITY



Manchester Metropolitan University is a modern university inspired by the spirit of a global city, challenging students to make their mark on the world. Ranked in the world's top 200 university under 50 years old, Manchester Met offers a wide range of programmes at Foundation, Bachelor and Master levels across its four Faculties: Arts and Humanities, Business & Law, Health and Education and Science & Engineering. Located on a beautiful campus in the centre of one of Europe's most exciting cities, students at Manchester Met benefit from strong industry links and lifelong careers advice, with many programmes offering paid placements. To find out more please visit www.mmu.ac.uk/international



NEWCASTLE UNIVERSITY

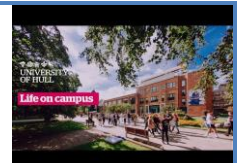


Newcastle University is a world-class university dating back to 1834, with an international reputation for academic excellence. We are a member of the elite Russell Group, a group of 24 highly research-intensive institutions in the UK. Newcastle's high-quality teaching, strong research profile, and first-class student support make it one of the most popular universities in the UK. Situated in the heart of one of the UK's most dynamic student cities, Newcastle is home to over 28,000 students including 5,000 International students from over 120 countries. International students appreciate Newcastle's city-centre campus, excellent travel links, and low cost of living. With a staff complement of more than 5,700, Newcastle's reputation has resulted in attracting some of the leading academics and researchers from around the globe, opening access to a wealth of global experiences and expertise for our students. To find out more please visit www.ncl.ac.uk



UNIVERSITY OF HULL

UNIVERSITY OF HULL

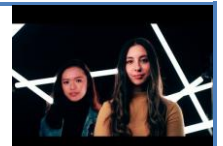


The University of Hull is the 14th oldest university in England. We have a proud history of academic excellence and creating and inspiring life-changing research, all in a friendly student city. We are a top 50 university for research power (REF 2014). We have invested £300 million on new facilities including a world-class library, 400-seater concert hall and industry standard recording equipment, student accommodation and new sports facilities. Everything needed to live and study – including accommodation and student support services – all on one campus. Our student union hosts over 85 societies and sports clubs and we are the only university to be an Official Partner of Team GB. To find out more please visit www.hull.ac.uk

MANCHESTER 1824

The University of Manchester

THE UNIVERSITY OF MANCHESTER



Located in the heart of one of the most vibrant, dynamic cities in the UK, The University of Manchester is a leading public research university with a reputation for excellence and innovation: 25 Nobel Prize winners have come from this institution. Currently ranked 27th in the world and 6th in the UK (QS 2022), it is home to more than 40,000 students from over 180 different countries. To find out more please visit www.manchester.ac.uk



University of
Nottingham
UK | CHINA | MALAYSIA

THE UNIVERSITY OF NOTTINGHAM



The University of Nottingham is a pioneering university providing an exceptional research-led education and an outstanding student experience for our 46,000 students. Consistently targeted by leading graduate employers for our talented and well-rounded graduates. We deliver world-leading research that transforms lives, improves societies, and shapes the future. Ranked eighth in the UK for research power, with 97% of our research recognised internationally (REF 2014), and with a research portfolio worth over £650 million. We are 103 in the world (18 in the UK) out of more than 1,000 universities in the QS World University Rankings 2022, a pioneer in global education, with award-winning campuses and unrivalled facilities in both the UK and Asia. To find out more please visit <https://www.nottingham.ac.uk/>



THE UNIVERSITY OF SHEFFIELD



The University of Sheffield is a World Top 100 Institution and is a member of the Russell Group of leading UK research universities currently ranked 13th in the UK according to the 2022 Times Higher. The University of Sheffield has over 800 courses at both Undergraduate and Postgraduate level in the following six faculties: Arts & Humanities; Engineering; Medicine, Dentistry & Health; Science and Social Sciences. The University of Sheffield has links with companies like Rolls-Royce and Boots and offers many opportunities to add to your CV through placements, volunteering, part time employment and mentoring. The University of Sheffield is proud to offer students from Pakistan many scholarships. We have guaranteed scholarships of up to £2500 and Academic Merit Scholarships worth 50% scholarships for Undergraduate students and 25% for Postgraduate students Discover more at the University of Sheffield www.sheffield.ac.uk



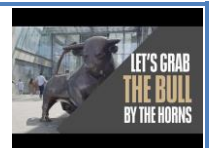
UNIVERSITY OF BEDFORDSHIRE



The University of Bedfordshire is an internationally recognised and award-winning Higher Education institution where our academic staff have won National Teaching Fellowship Awards. We warmly welcome students from across South Asia and offer a vast range of career-enhancing courses that are very attractive to international students. Our student population includes around 20,000 students from over 120 countries. The Luton campus is only 22 minutes away from Central London by train. Our tuition fees and on-campus accommodation are very affordable, and we offer international scholarships of up to £1,500. To find out more please visit <https://www.beds.ac.uk/>



UNIVERSITY OF BIRMINGHAM



A founding member of the Russell Group, the University of Birmingham is a prestigious, world leading educational institution, which provides an exceptionally high level of teaching and world-leading research. The University of Birmingham is ranked 90th in the 2022 QS World University Rankings, cementing our position in the top 100 universities globally. At Birmingham you will be part of a diverse community located in an inspirational campus setting, with the most vibrant, multicultural city in the UK on your doorstep. To find out more please visit www.birmingham.ac.uk

**University of Brighton**

UNIVERSITY OF BRIGHTON



The University of Brighton is one of the largest campus-based university situated on the south eastern coast of UK, roughly 1 hour away from London. We are ranked by the Lonely Planet for having the top 10 best beaches in the world alongside Sydney and Rio. We have also been recognized for being a university with a “healthy student mix” by QS. What this means is that we do not have any one ethnicity or country represented at a majority at the university. The university is very focused on research and employability. We believe they both work hand in hand and helps the individual become a more rounded employee. 92% of the research that is conducted at the university by the students can be linked directly to the market. Additionally, 94.4% of the students who graduate from the university are placed in a relevant field of work based on their education degree through our career cells. We are very proud to start placement year for master’s course in our Business School – this means that students who are studying courses in the business department at the master’s level will have a chance to do a paid placement year in the UK. To find out more please visit. To find out more please visit www.brighton.ac.uk



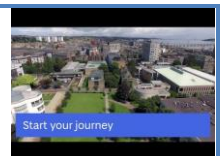
UNIVERSITY OF CHESTER



With 15,000 students from 130 countries worldwide, The University of Chester provides a vibrant, diverse, and safe home for international students. The university is one of the oldest higher education providers in the United Kingdom having recently celebrated its 180th year of teaching, starting off as a teacher training college back in 1839. Originally based on one campus in Chester, the university now offers more than 200 single and combined honour’s programmes across several specialist sites in Chester, Shrewsbury, and Warrington. Courses have an emphasis on practical learning to enhance prospects via industry placements or overseas opportunities, ranging from five-weeks to one-year. The University of Chester offers generous international and merit-based scholarships for both undergraduate and postgraduate study, providing a significant reduction to the headline tuition fees. For applicants who do not have a secure English Language test (SELT) or an acceptable in-country English language qualification, the University of Chester has developed its own English language test, which applicants can take. Candidates will be tested in all four areas of English language proficiency and will be benchmarked against the CEFR framework. This assessment is recognised for visa purposes. To find out more please visit www.chester.ac.uk



UNIVERSITY OF DUNDEE



The University of Dundee focuses on teaching traditional and professional degrees using innovative approaches and is within the top 200 universities worldwide for graduate employment rates (QS World University Rankings 2022). With 16,500+ students from across the world, the University of Dundee is truly a global institution. Dundee is a multicultural and safe city and was revealed as the most affordable place for students in the UK to live (Oxford Royale 2021). Our compact city campus has an ideal location in the heart of Dundee, with the city’s best restaurants, bars, cafés, and shops only a short walk away. To find out more please visit www.dundee.ac.uk



UNIVERSITY OF EAST ANGLIA



University of East Anglia is one of the Top 25 university in the UK (The Complete University Guide 2022) which is also one of the Top 200 in the world (THE World University Ranking 2022). UEA is a campus-based university spread across 320 acres of rolling parkland in the suburbs of the beautiful city of Norwich. Renowned for its world-class teaching facilities, research and a homely campus environment, UEA offers 450+ quality programs at undergraduate and postgraduate level. With over £21 million worth scholarship awarded this year, we have about 4000 international students from 120 different countries. With UEA's huge selection of courses, expert tuition, and access to exceptional research and teaching activities; your experience at UEA will help you realise your ambitions. To find out more please visit <https://www.uea.ac.uk/>



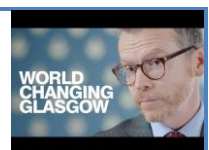
UNIVERSITY OF EXETER



The University of Exeter, a member of the prestigious Russell Group, is ranked Top 150 in the QS World University and Times Higher Education Rankings. Additionally, it is also a UK Top 15 University that offers 3 year Bachelor and 1 year Masters programmes. The University of Exeter combines world-class research with excellent student satisfaction at its campuses in Devon and Cornwall, South West region of England, which has fabulous national parks and beaches. Our Business School is Triple Accredited. We have a 95% on-time completion rate and 90% of graduates in or due to start employment or further study fifteen months after graduation. Students have the option of more than 250 clubs and societies and we are a proud former Sports University of the year. The university currently has around 27,300 students of which 6,700 are international making for a really vibrant and inclusive academic community. To find out more please visit www.exeter.ac.uk



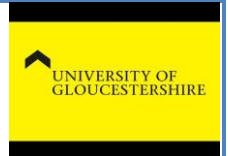
UNIVERSITY OF GLASGOW



Ranked 86th in the 2022 Times Higher Education World University Rankings, the University of Glasgow is home to 33,000 students from over 140 countries. Founded in 1451, the University is part of the Russell Group of research led UK universities and has an excellent reputation throughout the world. The University's main campus is nestled within Glasgow's cosy and cultural West End, home to cafés, bars, restaurants, vintage boutiques and cultural attractions. Voted the world's friendliest city, it is also one of Europe's most diverse. Choose from degrees relating to Medicine, Business, Engineering, Science or Arts and join our vibrant, talented, and world-changing Team U of G community. To find out more please visit <https://www.gla.ac.uk/>



UNIVERSITY OF GLOUCESTERSHIRE



The University of Gloucestershire has a tradition of education dating back to 1834. Over the last 180 years, we have developed our curriculum and teaching to ensure that our students not only obtain an academic qualification, but also leave with skills relevant to their future employment. We now offer a wide range of undergraduate, postgraduate and research degrees, along with professional programmes and short courses at our three campuses, two in the town of Cheltenham and one in Gloucester. Each campus has its own distinctive atmosphere and subject areas. To find out more please visit www.glos.ac.uk/



UNIVERSITY OF GREENWICH



Greenwich is a place where students have a great and memorable student experience. It brings together people with a shared interest in learning new things, developing skills and fulfilling potential. Our students are part of an amazing community that celebrates difference and diversity, representing over 130 countries around the world. You'll meet people who you identify with, can relate to and who will become your friends. We're also one of the few London universities that has everything you need in one place. Teaching, social, sports and living spaces are all on campus or close by. The International Recruitment Officer for South Asia, Monet Lawes will be joined by a current international student for the event. They will be available to answer any questions you have about applying to Greenwich, student life and the opportunities being a student at Greenwich can offer. To find out more please visit www.gre.ac.uk/



UNIVERSITY OF KENT



The University of Kent is a global university with outstanding teaching, modern facilities, award-winning student support and welcoming study locations. Over 18,000 students from 152 countries study across its two spacious UK campuses and specialist postgraduate centres in Europe. Kent is ranked in the top 50 universities in the UK by The Times and Sunday Times Good University Guide 2021 and offers a wide range of foundation, undergraduate and postgraduate degrees, exciting study abroad and year in industry opportunities, summer schools, and a generous scholarship fund including awards for academic, musical and sporting excellence and dedicated scholarships for international students. To find out more please visit <https://www.kent.ac.uk>

**UNIVERSITY OF LEEDS****UNIVERSITY OF LEEDS**

The University of Leeds is a world top-100 university (QS World University Rankings 2021) and one of the most prestigious universities in the UK. Renowned for the quality of our teaching and research, Leeds has over 38,000 students from 170 countries and one of the widest ranges of degrees in the UK. Located in the heart of a vibrant, student-friendly city, our campus is a mix of modernity and tradition with world-class facilities including state-of-the-art libraries and industry standard laboratories. Award-winning Leeds University Union is one of the biggest and most active in the country, with over 300 clubs and societies. To find out more please visit <https://www.leeds.ac.uk/>

**UNIVERSITY OF LINCOLN****UNIVERSITY OF LINCOLN**

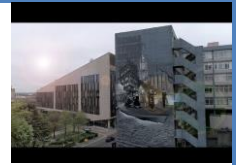
Located in the heart of England with excellent academic credentials and a proud heritage dating back to 1861, the University of Lincoln offers a unique and academically rigorous study environment with over 200 programmes of study on offer. The University of Lincoln is proud to have some of the most satisfied students in the UK, with a number of our programmes and Schools featuring in the top 20 nationally and has a growing international reputation. Along with our award-winning programmes, the University's Students Union has recently been voted best in the UK, offering over 120 different sports clubs and societies to over 12,000 students across campus. To find out more please visit www.lincoln.ac.uk

**UNIVERSITY OF SOUTHAMPTON**

We are a top 100 global university (QS World University Rankings, 2020) and a founding member of the Russell Group, with over 150 years of history. Home to over 21,000 students from more than 130 countries, and around 6,000 members of staff, we are proud of our diverse, vibrant and welcoming community. Our innovative thinking and pioneering research is making an impact on a global scale; we are finding solutions for some of the biggest challenges which our planet is facing. This is the place where fibre-optic research is creating a faster, smarter internet; where the immune system is leading the fight against cancer; where expertise is tackling the growing threat of antimicrobial resistance; and where resources are being secured for the world's growing populations. We stand for exploration and curiosity, using interdisciplinary thinking, inventive education and cutting-edge facilities to catalyse change. We are bringing people and ideas together, inspiring minds, and giving them the space and support to grow, ignite and realise their potential. We forge and nurture connections with industry and organisations, develop new businesses and support the next generation of leaders and thinkers to achieve their potential. Based in a growing city full of opportunities, Southampton is the perfect place to take your work further and discover what you're capable of; from turning an idea into reality and making a real difference, to finding new passions and discovering your next step. To find out more please visit www.southampton.ac.uk



UNIVERSITY OF STRATHCLYDE



The University of Strathclyde is a world-leading technological university located in the heart of Glasgow – one of the UK's largest cities. With more than 23,000 students from over 100 countries, the University of Strathclyde is a vibrant and welcoming place for students from all backgrounds.

- UK University of the Year 2019 (Times Higher Education Awards) – only Scottish University to receive this UK-wide award twice.
- Scottish University of the Year 2020.
- We're a 5-star QS rated University (2017-2020).
- Glasgow is the 8th best city in the world according to Time Out: The 48 best cities in the world in 2019.
- Top 20 UK University for research according to the Times Higher Education

To find out more please visit <https://www.strath.ac.uk/>



UNIVERSITY OF SUSSEX



The University of Sussex is a leading research-intensive university ranked Joint 151st in the world: The Times Higher Education World University Rankings 2022. We have both an international and local outlook, with staff and students from more than 100 countries and frequent engagement in community activities and services. The University of Sussex is the only university in England to be surrounded by a National Park. Located in the South Downs, near the city of Brighton, Sussex's campus location is the perfect place to study if you enjoy green surroundings with a city on your doorstep. To find out more please visit www.sussex.ac.uk



UNIVERSITY OF WOLVERHAMPTON



The University of Wolverhampton is one of the most successful modern universities, delivering excellence in teaching and research. As the 'University of Opportunity', the University of Wolverhampton is an integral part of economic growth and social change within the West Midlands and beyond. With over 500 courses to choose from, international students can move closer to their career goals. Three faculties offer courses in more than 70 subject areas, with many courses accredited by professional bodies. We have three main teaching campuses in the UK. We are well known for the provision of high-quality education with an excellent graduate employment record, with 96% of our most recent graduating class in employment or further study**. To find out more please visit www.wlv.ac.uk