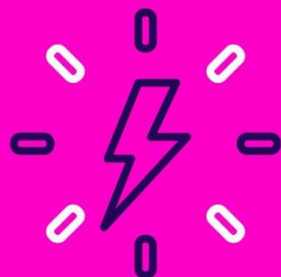
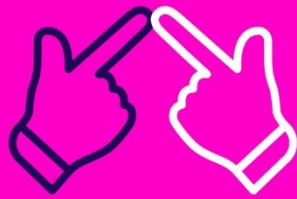


Schools Connect

National School Leadership Standards *Brief*



School Leadership Standards

Introduction

The Schools Connect Programme is designed to respond to demand from Pakistan for connection to UK expertise on key educational themes and facilitating these connections through policy dialogue, advocacy and technical assistance.

Schools Connect Programme is providing an opportunity to learn and share from successful school systems from around the world to improve quality domestically while enabling schools to internationalise their curriculum to support young people to become globally aware and competent.

The Schools Connect Programme is designed to support young people in the UK and Pakistan to gain knowledge and skills to contribute to global society. We do this by engaging senior educators, leaders and policymakers to strengthen quality and inclusion in schools and building long-term connections with the UK.

Technical assistance to government partners on School Leadership Standards

British Council in collaboration with Federal and provincial ministries of Education in Pakistan has co-designed the National Standards for Head teachers and Principals, providing a road map to support and challenge them to achieve high standards of leadership in their schools.

Who can use the Leadership Standards?

The Standards are for all aspiring and serving head teachers and principals across Pakistan irrespective of the type, size and age-range of the schools. The standards can be contextualised to reflect the specific circumstances of the school. The framework may be based on evidence and be future oriented.

Importance of Leadership Standards

The National Standards for Headteachers and Principals is an important tool to clarify the role and responsibilities of headteachers and principals make them accountable. These standards provide support to headteachers in their work, motivate and develop their positive attitude towards students, teachers and community at large. Effective use of Standards improves the quality of leadership in schools and student learning.

Co-construction of Leadership Standards

These standards had been co-constructed by a task group of senior education experts and headteachers worked with two facilitators and two international consultants from United

Kingdom. They have been endorsed by Federal, KP and Punjab to be roll out across the three regions.

Core purpose of headship / principalship

Head teachers / Principals are leading educational professionals in the school who keep leading of teaching and learning at the heart of their thinking and actions. Through their leadership and character, they inspire students, staff and members of the community in order to continuously enhance learning and raise outcomes for all students. They lead and manage their schools in what can be a complex, changing environment.

Having impact is important and they seek to continuous improvement in their schools through the work they undertake. Principals build capacity, collaborate and work in partnership with a wide range of people to secure the best possible learning outcomes and wellbeing of all students. Through their effective leadership they establish and maintain professional relationships and systems to find innovative solutions that support positive outcomes for all.

Leadership Standards structure

The structure of the framework is comprised of the following key areas:

- Leading the school into the future
- Leading and managing teaching and learning - 1500 school leaders are piloting this component where inclusive and effective leadership practices have been introduced using enabling and instructional leadership approach.
- Leading, managing and developing staff
- Leading and managing the organisation
- Leading in the community - recently launched in Punjab and Khyber Pakhtunkhwa where School Management Committees (school councils in Punjab and Parent teachers Council in Khyber Pakhtunkhwa) will be led by school leaders to engage the community to address the issues of quality, inclusion, resilience and professional development.

Each key area further consists of:

A. Knowledge and Understanding

B. Skills

C. Evaluation statement – demonstration of knowledge and skills in action

Watch this space for more on School Leadership Standards.