

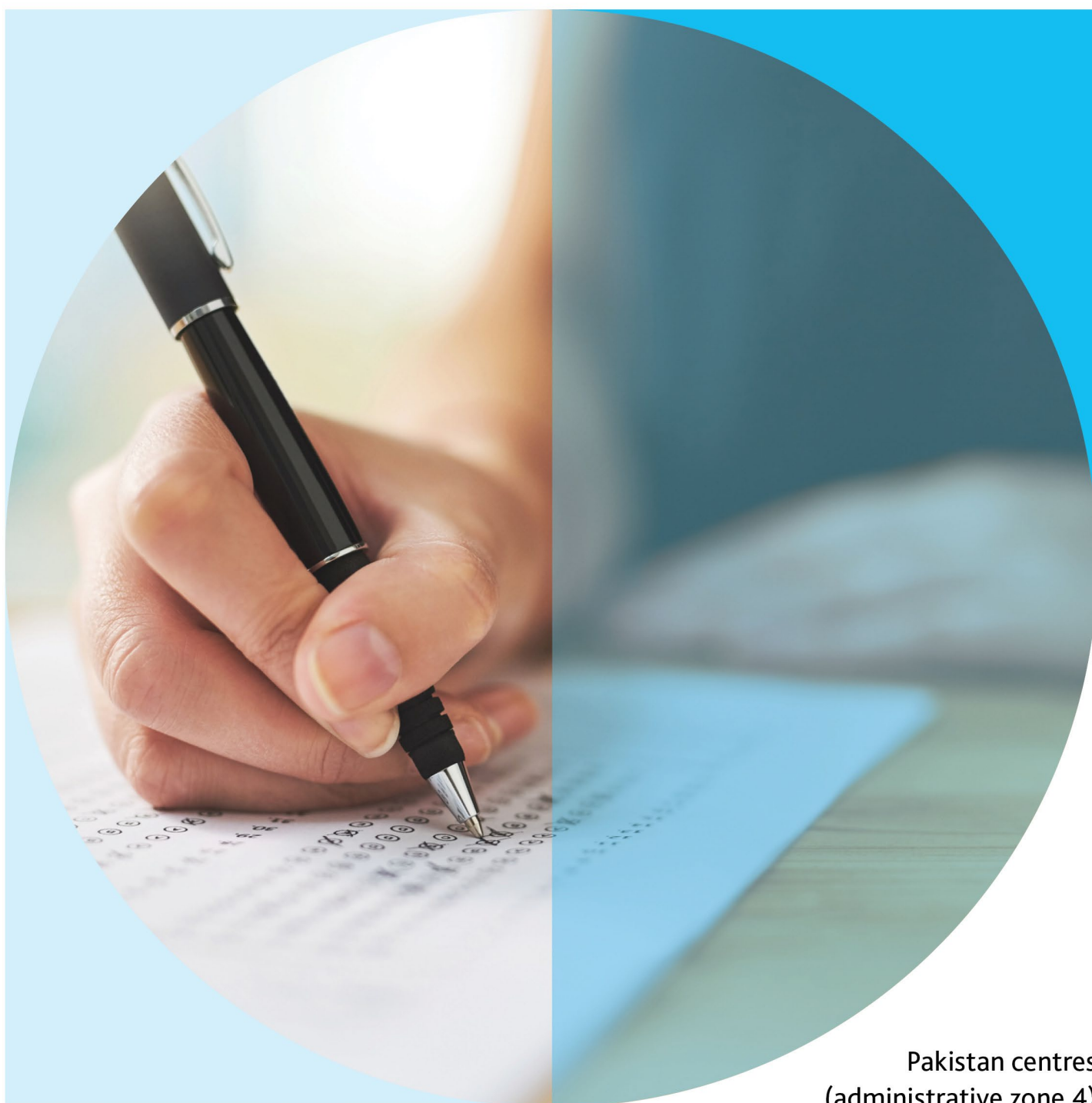


**Cambridge Assessment
International Education**

Cambridge IGCSE
Cambridge O Level
Cambridge International AS & A Level
Cambridge IPQ

Cambridge Guide to Making Entries

Including syllabus and option codes for November series 2022



**Pakistan centres
(administrative zone 4)**

Any correspondence or requests for advice relating to the submission of entries should be sent to your local British Council office. Please quote your centre number in all communications.

PLEASE DESTROY ALL PREVIOUS COPIES OF THE GUIDE TO MAKING ENTRIES FOR THE NOVEMBER SERIES.

Contents

	Page
Introduction	04
Final date for receiving entries.....	04
Part 1: Instructions for submitting entries	05
1.1. Preparing your entries	05
1.2. Entering candidates.....	05
1.3. Making your syllabus entries	06
1.4. Submitting your entries.....	06
1.5. Making amendments	06
Part 2: After submitting your entries	07
2.1. Entry feedback documents	07
2.2. Checking your entry information.....	08
Part 3: List of syllabus codes for the November 2022 Series	09
3.1. Introduction.....	09
3.2. Use of entry option codes.....	09
3.3. Entry option codes for carry forward components.....	10
3.4. Entry option codes for staged assessment	10
3.5. Cambridge IGCSE syllabuses in alphabetical order	12
3.6. Cambridge International O Level syllabuses in alphabetical order	23
3.7. Cambridge International AS & A Level syllabuses in alphabetical order	31
3.8. Cambridge International Project Qualification syllabus.....	47
Part 4: Instructions for entering candidates for Cambridge International group awards.....	48
4.1. Entering candidates for Cambridge ICE.....	48
4.1.1 Introduction	48
4.1.2. How to enter for Cambridge ICE	48
4.1.3. Taking Cambridge ICE over two series	48
4.1.4. List of qualifying subjects for Cambridge ICE.....	49
4.1.5. Using Cambridge O Level subjects as part of Cambridge ICE	50
4.1.6. Confirmation of Cambridge ICE entry.....	50
4.1.7. Calculating the Cambridge ICE award	51
4.1.8. Cambridge ICE results and certificates	51
4.2. Entering candidates for the Cambridge AICE Diploma	52
4.2.1. Introduction	52
4.2.2. How to enter for the Cambridge AICE Diploma.....	52
4.2.3. Taking the Cambridge AICE Diploma over more than one series	52
4.2.4. List of qualifying subjects for the Cambridge AICE Diploma	53
4.2.5. Cambridge AICE Diploma credit system	54
4.2.6. Calculating the Cambridge AICE Diploma.....	54
4.2.7. Cambridge AICE Diploma results and certificate	55
4.2.8. Re-sitting the Cambridge AICE Diploma	55
Index of Cambridge IGCSE syllabuses in syllabus code order	56
Index of Cambridge International O Level syllabuses in syllabus code order	56
Index of Cambridge International AS & A Level syllabuses in syllabus code order	57
Index of Cambridge International Project Qualification syllabus	57

Introduction

This guide is for new and experienced exams officers who need to submit entry information for Cambridge International exams. It provides a high-level view of the entry submission process and a detailed description of the procedures that you need to follow. The guide also provides an index of all syllabus and option codes for entry in the November 2022 exam series.

The qualifications covered in this document are:

- Cambridge International General Certificate of Secondary Education (IGCSE™)
- Cambridge Ordinary Level (O Level)
- Cambridge International Advanced Subsidiary Level (AS Level)
- Cambridge International Advanced Level (A Level)
- Cambridge International Project Qualification (CIPQ)
- Cambridge International Certificate of Education (ICE Diploma)
- Cambridge Advanced International Certificate of Education Diploma (AICE Diploma)

Cambridge Primary Checkpoint and Cambridge Lower Secondary Checkpoint are part of the October 2022 series. You can find information relating to these qualifications in the *Cambridge Guide to Making Entries for Primary Checkpoint and Lower Secondary Checkpoint Syllabuses October 2022*.

You should read this guide in conjunction with the *Cambridge Handbook 2022*. This sets out the regulations that govern all Cambridge International exams and the administrative tasks exams officers need to carry out during the series. You should also refer to the November 2022 exam timetable to make sure that any timetable clashes are detected as early as possible.

The guide is divided into the following sections:

- Part 1 provides information on the different methods available for submitting your entries and gives detailed instructions on how to use these.
- Part 2 provides information on what happens after we have received your entries and what materials you will receive once we have processed them.
- Part 3 provides an index of the syllabus and option codes available in the November 2022 exam series.
- Part 4 provides entry instructions for the Cambridge ICE and AICE Diploma group awards.

This version of the *Cambridge Guide to Making Entries* describes the process for submitting entries from the perspective of an exams officer from a school attached to the British Council.

Final date for receiving entries

The British Council will notify schools of the final date for entries to be received at the British Council. Any additional entries or changes to entry options received after this date may be subject to late entry fees.

The British Council will also notify centres of the final date for any additional entries or changes to entry options to be submitted. **No late entries or changes to entry options will be accepted after this date.**

Part 1: Instructions for submitting entries

1.1 Preparing your entries

Before entries open for the series, the British Council will provide information on which entry system you should use to prepare your entries and how these should be submitted to the British Council for approval. The following section explains the information Cambridge International will need to enter candidates for their exams, which must be provided in accordance with the instructions and deadlines issued by the British Council.

1.2 Entering candidates

The following information should be provided for all candidates entering for Cambridge International exams. Take care to make sure that all candidate information provided is accurate and complete when this is first sent. While it is possible to make amendments later, sending inaccurate candidate details can lead to delays in producing results at the end of the series.

- **Candidate Number:**
- You must allocate a unique number to each candidate, in the range 0001 to 9999. Do not enter candidates under more than one number. Candidate numbers cannot be changed after you have submitted the entry.
- **Name:**

The name of the candidate, which can be a maximum of 60 characters in length – you will need to abbreviate any names longer than this. The candidates' names can be entered in one of two ways:

 - In the format you would like it to appear on the candidate's statement of entry (i.e. 'JOHN KEATS' will be printed as 'JOHN KEATS').
 - With the family name given first, followed by a colon (:) and then the candidate's given name(s). When the Statement of Entry is printed, the name will be reversed to print the candidate's given name(s) first. (i.e. 'KEATS:JOHN' will be printed as 'JOHN KEATS').
- **Date of Birth:**

Enter candidates' dates of birth in the standard UK date format, which is dd/mm/yyyy.
- **Gender:**

Select the gender of the candidate, either 'Male' or 'Female'.
- **English First Language?:**

Select whether English is the candidate's first language. This is required for all candidates entering for Checkpoint exams.
- **Status:**

Indicate whether the candidate is a 'School' or 'Private' entry. Candidates who do not take classes at your centre and are only using your centre as an exam venue should be entered as 'Private'.
- **Previous Centre Number & Previous Candidate Number:**

If the candidate is retaking an exam or carrying-forward any marks or results from a previous series, you must provide the centre number and candidate number where they sat their previous exams. Please note that we still need this information if the candidate is using the same candidate number in the current series.

IMPORTANT: The previous entry details must be provided in full and cannot be abbreviated (i.e. both the centre and candidate number must be included, 'PK999' cannot be entered as '999', etc.)

Depending on the entry system used, you may be able to provide the following additional information:

- **CID (Unique Candidate Identifier):**

This field allows you to enter a candidate UCI number, which should be 12 characters long. This is not required for general qualifications and the field should be left blank.
- **NID (National Identity Number):**

This field allows you to enter a National Identity Number, which can be up to 20 characters long.
- **ULN (Unique Learner Number):**

This field allows you to enter a candidate ULN, which should be 10 characters long. ULN information is usually only required for candidates in the UK, so this should be left blank.

Entering candidates under more than one centre number

Candidates should normally only be entered at one centre in each series and all their subject entries should be submitted under a single candidate number at that centre. However, if a candidate wishes to enter for a subject that your school would not normally offer, it may be possible for the candidate to enter for this additional subject through the British Council as a private candidate, while remaining entered at your school for the subjects which you do offer.

If a candidate does enter for subjects at two different centres for this reason, they will receive a separate certificate for the subjects they have taken at each centre. It will not be possible to merge these into a single certificate. Please also note that entering candidates at more than one centre in a series can cause issues with carrying forward marks to a later exam series or when combining results for group awards. When candidates are entered at more than one centre in this manner, please refer carefully to the timetable to make sure that you are aware of any potential timetable clashes and that the candidate has enough time to move between exam venues if this is necessary.

1.3 Making your syllabus entries

Part 3 of this Guide describes how to enter candidates for syllabus entries using the syllabus and option codes listed. Available syllabuses for the series are listed alphabetically alongside the components included in each syllabus. If you wish to enter a syllabus that is not included in the syllabus list, a request should be made immediately to the British Council.

Each candidate's entries must be made by providing the information below:

- Insert in the **Syllabus Code** box the four-digit syllabus code found in the syllabus list in Part 3.
- Insert in the **Option Code** box the one or two character option code found in the syllabus list in Part 3.

Both pieces of information are required, unless the syllabus list specifically states the option code field should be left blank. Care should be taken to select the correct syllabus and option code, especially if alternative syllabuses are available in a particular subject.

1.4 Submitting your entries

Once you have prepared your initial entries, you must submit this to the British Council for processing, who will then send the entries onto Cambridge. If the British Council cannot accept your entries or Cambridge International find any problems when processing the file, the British Council will let you know by email and tell you what you need to do. Entries must not be submitted to Cambridge International directly.

1.5 Making amendments

Once your initial entries have been submitted and processed, you can continue to make changes to your entries, including changes of personal details, amendments to the option codes of existing entries, addition of new candidate/syllabus entries or withdrawal of candidates/syllabuses. Any changes sent after your initial submission are classified as amendments and must be submitted using the same system as your final entries.

Please note that late fees will apply for any amendments to the option codes of existing entries or additional candidate/syllabus entries received by Cambridge International after the entry deadline.

Part 2: After submitting your entries

2.1 Entry feedback documents

Once your entries have been received and processed, you can download your confirmation documents from Direct.

Statements of entry

We produce a statement of entry for each candidate showing the following information:

- the centre number, centre name and candidate number for the current series
- the candidate's personal details (name, date of birth and gender)
- any previous entry details provided
- a full list of all syllabuses and entry options for the candidate.

You must give all candidates the opportunity to check the details on their statement of entry.

This document also includes the Notice to Candidates, which gives a summary of the conduct required for Cambridge International exams.



Statement of Entry June 20xx

All entry details, including the spelling of your name and date of birth must be checked for accuracy

Candidate Name	Date of Birth	Centre / Cand. No.
EXAMPLE CANDIDATE ONE	22 MAY 1994	XX123/0001
Centre Name	Previous Entry Details	Gender
EXAMPLE CENTRE	XX124/0045	F

Syllabus/Component	Syllabus and Component Titles	Exam Date	Time
IGCSE			
0510/A	English as a Second Language (Speaking Endorsement)		
01	Reading and Writing (Core)	01 MAY	AM
03	Listening (Core)	02 MAY	AM
05	Oral Communication		
0520/B	French		
01	Listening	03 MAY	AM
02	Reading and Directed Writing	04 MAY	AM
03	Speaking		
04	Continuous Writing	05 MAY	AM
0600/A	Mathematics (Without Coursework)		
01	Paper 1 (Core)	01 JUNE	PM
03	Paper 3 (Core)	02 JUNE	PM
0610/C	Biology		
01	Multiple Choice	03 JUNE	AM
03	Extended Theory	04 JUNE	AM
06	Alternative to Practical	05 JUNE	AM
0625/C	Physics		
01	Multiple Choice	06 JUNE	AM
03	Extended Theory	07 JUNE	AM
06	Alternative to Practical	08 JUNE	AM

By entering for the examination you agree to be bound by CIE rules and regulations for the conduct of examinations. Keep this Statement of Entry in a safe place until results are published.

Date of Issue: 21/02/2014

Page 1 (final page)

Candidate entry listing

This provides a summary of all entries made for the centre. It will be in candidate number order and lists which syllabuses and entry options you have entered each candidate for.



Candidate Entry Listing June 20xx

This statement confirms your CIE examination entries accepted for the session shown.

Centre Number	School	Centre Name
XX123	XX123	EXAMPLE CENTRE

Candidate No. and Name	Syllabus, Option and Component Details	Syllabus Title	Gender	Date of Birth	S/P
0001 EXAMPLE CANDIDATE ONE	0510 A (01 03 05) 0520 B (01 02 03 04) 0600 A (01 03) 0610 C (01 03 06) 0625 C (01 03 06)	ENGLISH AS A SECOND LANGUAGE FRENCH MATHEMATICS (W/OUT COURSEWORK) BIOLOGY PHYSICS	F	22 MAY 1994	S
0002 EXAMPLE CANDIDATE TWO	0510 A (01 03 05) 0520 B (01 02 03 04) 0580 A (01 03) 0610 C (01 03 06) 0625 C (01 03 06)	ENGLISH AS A SECOND LANGUAGE FRENCH MATHEMATICS (W/OUT COURSEWORK) BIOLOGY PHYSICS	M	30 SEP 1995	S
0003 EXAMPLE CANDIDATE THREE	0580 A (01 03) 0610 C (01 03 06) 0620 C (01 03 06) 0625 C (01 03 06)	MATHEMATICS (W/OUT COURSEWORK) BIOLOGY CHEMISTRY PHYSICS	F	03 NOV 1995	S

Date of Issue: 21/02/2014

Page 1

Centre summary of entries

This provides a summary of the total number of entries you have made for each exam component.

You can use this information to check that you have received the right number of each question paper.



Cambridge Assessment
International Education

Centre Summary of Entries June 20xx

This lists candidates, by syllabus code order, the syllabuses and components for which entries have been submitted by the centre identified below.

Centre Number	School	Centre Name			
XX123	XX123	EXAMPLE CENTRE			
Qualification	Syllabus Code / Title		Component Code / Title		No. of Entries
GCE AS & A LEVEL	9893	ENGLISH LANGUAGE	01	Passages for Comment	1
			02	Composition	1
	9709	MATHEMATICS	01	Paper 1	4
			02	Paper 2	4
IGCSE	0500	FIRST LANGUAGE ENGLISH	01	Reading Passages (Core)	10
			03	Directed Writing & Composition	10
	0520	FRENCH	01	Reading and Directed Writing	15
			02	Listening	15
			03	Speaking	15
			04	Continuous Writing	10
	0580	MATHEMATICS (WITHOUT COURSEWORK)	01	Paper 1 (Core)	20
			02	Paper 2 (Extended)	5
			03	Paper 3 (Core)	20
			04	Paper 4 (Extended)	5

Date of Issue: 21/02/2014

Page 1

Centre entry warning list

This warns you about any potential timetable clashes for individual candidates.

Use this information to plan around any timetable clashes and to apply for timetable deviations, if required.



Cambridge Assessment
International Education

Centre Entry Warning List June 20xx

Centre Number	School	Centre Name
XX123	XX123	EXAMPLE CENTRE
Warning Message		Timetable Clash Analysis
Candidate Number		Date
0004 0017 0023		14 May 14 am 0450 (01) with 0520 (02) 0450 (01) with 0520 (02) 0450 (01) with 0520 (02)
		17 May 14 am 9707 (02) with 9716 (01)
		22 May 14 am 9701 (01) with 9715 (04) 9701 (01) with 9715 (04)

Date of Issue: 21/02/2014

Page 1

2.2 Checking your entry information

We advise you to check that all entry information is correct before the published entry closing date for the series. Late fees may be charged for making amendments or corrections after this date.

As stated in the *Cambridge Handbook*, you are responsible for making sure that all entry information is correct.

You should also provide each candidate with a copy of their statement of entry, including private candidates. Candidates should use this to check that their information is correct. In particular, candidates should check that:

- their name has been correctly spelt and is as it should appear on their certificate
- their date of birth and gender are correct
- the total number of syllabuses is correct
- they have not been entered for any unexpected exam components (e.g., they have been entered to submit coursework but they expected to be entering for written papers only)
- there are no warning notices on their statement of entry.

Remember that candidates may be unfamiliar with the entry codes so they may need help to check that they are entered for the correct exam.

If there are any errors in your entry feedback documents, submit an amendment to the British Council as soon as possible.

Part 3: List of syllabus codes for the November 2022 series

3.1 Introduction

This section contains syllabus information for all Cambridge International exams available in the November 2022 series. It includes details of syllabus numbers, entry option codes, component weightings and exam durations. Disallowed syllabus combinations are also listed for most subjects.

Component numbers always have two digits. For component numbers that do not begin with a zero, the first digit refers to the paper number in the syllabus and the second digit identifies the component version applicable to your administrative zone.

You can only submit entries for syllabuses that your centre has been approved to offer. If you intend to submit entries for a subject your centre has not entered in the past, please submit a Preparation – Form 5 to the British Council. This form is available at www.cambridgeinternational.org/preparation

3.2 Use of entry option codes

Each syllabus entry is made up of two pieces of information:

- A **syllabus code**: this four-digit numeric code indicates which subject the candidate is taking.
- An **option code**: this can be up to two characters long and indicates which combination of exam components the candidate will be sitting. The option code will usually start with a letter.

In the subject given below, there are four different entry options, ranging from A to D. Select the option code that shows the combination of exam components your candidates will take. For example:

- If a candidate is entering for the Multiple Choice paper (01), the Extended Theory exam (03) and will be submitting coursework (04), enter them for option code **A**. This option includes all three of the components the candidate intends to sit.

Example Subject 1		0998		
Option code	Candidates take components		Component	Component title
A	01, 03, 04 (Extended)		01	Multiple Choice
B	01, 03, 05 (Extended)		22	Core Theory 22
C	01, 22, 04 (Core)		03	Extended Theory
D	01, 22, 05 (Core)		04	Coursework
			05	Alternative to Coursework

- If another candidate is entering for the Core Theory exam (22) instead of Extended Theory and will be sitting the Alternative to Coursework paper (05) instead of submitting coursework, enter them for option **D**.

Example Subject 1		0998		
Option code	Candidates take components		Component	Component title
A	01, 03, 04 (Extended)		01	Multiple Choice
B	01, 03, 05 (Extended)		22	Core Theory 22
C	01, 22, 04 (Core)		03	Extended Theory
D	01, 22, 05 (Core)		04	Coursework
			05	Alternative to Coursework

A small number of syllabuses do not need an option code as there is only one valid combination of question papers that candidates can be entered for. If this is the case, the syllabus table will state 'Leave Blank' in the option code column. For all other subjects, the option code is a required part of the entry.

It is not possible to make entries for an individual component or to enter for only part of an option code. All candidates must be entered for one of the entry options listed. **Candidates sitting any other combination of question papers would not be eligible to receive a result.**

3.3 Entry option codes for carry forward components

Please be aware that our carry forward rules have been updated. For full guidance please see [our website](#).

Some syllabuses allow candidates to carry forward marks from a previous series within a 13-month period. For Cambridge IGCSE or O Level subjects, marks can only be carried forward **once**, while Cambridge International AS Level marks can be carried forward **twice**. If candidates wish to use marks from a previous series, you should enter them for the relevant 'Mark Carried Forward' component when making their entries.

In the subject given below, there are two entry options. One is for candidates submitting coursework, while the other is for candidates carrying a coursework mark forward. For example:

- If a candidate will be submitting their coursework in the current exam series, enter them for option **A**, as this includes an entry for the coursework component.

Example Subject 2		0999		
Option code	Candidates take components		Component	Component title
A	01, 02		01	Written Examination
B	01, 82		02	Coursework
			82	Coursework Mark (02) Carried Forward

- If a candidate has already submitted coursework in the last 13 months and wishes this mark to be carried forward instead of submitting coursework again in the current series, enter them for option **B**.

Example Subject 2		0999		
Option code	Candidates take components		Component	Component title
A	01, 02		01	Written Examination
B	01, 82		02	Coursework
			82	Coursework Mark (02) Carried Forward

3.4 Entry option codes for staged assessment

Where the syllabus allows, candidates can use a previous Cambridge International AS Level result taken within the last 13 months towards the award of a Cambridge International A Level in the same subject. This option is not available in language subjects, except for English. Syllabuses where a staged assessment option is available are indicated with an asterisk (*) next to the syllabus title.

In the subject given below, there are five different entry options:

- If a candidate will be sitting the full Cambridge International A Level in the current series, enter them for option **AY**. This option contains all AS and 'A2' components.

Example Subject 3*		9600		
Option code	Candidates take components		Component code	Component title
AY	11, 02, 03		11	AS Written Examination
BY	03, 88		02	AS Essay Question
CY	03, 98		03	A Level Written Examination
DY	11, 02, 03, 88, 98		88	June AS Mark (11, 02) Carried Forward
S	11, 02 (AS Level)		98	November AS Mark (11, 02) Carried Forward

- If you want to enter the candidate for the Cambridge International AS Level only in the current series, choose option **S**, which contains only the two AS Level components.

Example Subject 3*		9600		
Option code	Candidates take components		Component	Component title
AY	11, 02, 03		11	AS Written Examination
BY	03, 88		02	AS Essay Question
CY	03, 98		03	A Level Written Examination
DY	11, 02, 03, 88, 98		88	June AS Mark (11, 02) Carried Forward
S	11, 02 (AS Level)		98	November AS Mark (11, 02) Carried Forward

- If a candidate has taken the Cambridge International AS Level in the previous 13 months and only wants to sit the 'A2' components in the current series, enter them for either option **BY** or **CY**, depending on when their previous AS Level result was awarded.
- If a candidate wants to use a Cambridge International AS Level result awarded in the previous June series, enter them for option **BY**.

Example Subject 3*		9600		
Option code	Candidates take components		Component	Component title
AY	11, 02, 03		11	AS Level Written Examination
BY	03, 88		02	AS Level Essay Question
CY	03, 98		03	A Level Written Examination
DY	11, 02, 03, 88, 98		88	June AS Mark (11, 02) Carried Forward
S	11, 02 (AS Level)		98	November AS Mark (11, 02) Carried Forward

- If a candidate wants to use a Cambridge International AS Level result from the previous November series, enter them for option **CY**.

Example Subject 3*		9600		
Option code	Candidates take components		Component	Component title
AY	11, 02, 03		11	AS Level Written Examination
BY	03, 88		02	AS Level Essay Question
CY	03, 98		03	A Level Written Examination
DY	11, 02, 03, 88, 98		88	June AS Mark (11, 02) Carried Forward
S	11, 02 (AS Level)		98	November AS Mark (11, 02) Carried Forward

- If a candidate has taken the Cambridge International AS Level within the last 13 months and wishes to re-sit this in the current series while taking the 'A2' components, enter them for option **DY**. This will enter the candidate for all AS and 'A2' components and also carry forward their previous AS results. The highest set of available AS marks achieved by the candidate from the relevant series will contribute to their result.

Example Subject 3*		9600		
Option code	Candidates take components		Component	Component title
AY	11, 02, 03		11	AS Level Written Examination
BY	03, 88		02	AS Level Essay Question
CY	03, 98		03	A Level Written Examination
DY	11, 02, 03, 88, 98		88	June AS Mark (11, 02) Carried Forward
S	11, 02 (AS Level)		98	November AS Mark (11, 02) Carried Forward

You must make sure candidates have a valid mark to carry forward before entering them for a staged assessment option. You must also provide previous entry details with the candidate's carry forward entry.

3.5. Cambridge IGCSE syllabuses in alphabetical order:

Accounting

0452

Option code	Candidates take components	Available to private candidates?
AY	12, 22	Yes

Component code	Component title	Duration	Weighting
12	Paper 12	1h15m	30%
22	Paper 22	1h45m	70%

Notes Candidates may not sit this syllabus in the same series as 7707.

Additional Mathematics

0606

Option code	Candidates take components	Available to private candidates?
AY	12, 22	Yes

Component code	Component title	Duration	Weighting
12	Paper 12	2h	50%
22	Paper 22	2h	50%

Notes Candidates may not sit this syllabus in the same series as 4037.

Art & Design

0400

Option code	Candidates take components	Available to private candidates?
A	01, 02	-
B	02, 66	-
C	02, 67	-

Component code	Component title	Duration	Weighting
01	Coursework Assignment	-	50%
02	Externally Set Assignment	8h	50%
66	June Coursework Assignment Mark (01) Carried Forward	-	50%
67	November Coursework Assignment Mark (01) Carried Forward	-	50%

Notes Candidates may not sit this syllabus in the same series as 6090.

3.5. Cambridge IGCSE syllabuses in alphabetical order:

Biology			0610			
Option code	Candidates take components	Available to private candidates?	Component code	Component title	Duration	Weighting
BY	22, 42, 52 (Extended)	Yes	12	Multiple Choice (Core) 12	45m	30%
CY	22, 42, 62 (Extended)	Yes	22	Multiple Choice (Extended) 22	45m	30%
FY	12, 32, 52 (Core)	Yes	32	Theory (Core) 32	1h15m	50%
GY	12, 32, 62 (Core)	Yes	42	Theory (Extended) 42	1h15m	50%
			52	Practical Test 52	1h15m	20%
			62	Alternative to Practical 62	1h	20%
Notes Candidates may not sit this syllabus in the same series as 5090 or 5129.						

Business Studies			0450			
Option code	Candidates take components	Available to private candidates?	Component code	Component title	Duration	Weighting
Y	12, 22	Yes	12	Short Answer & Data Response 12	1h30m	50%
			22	Case Study 22	1h30m	50%
Notes Candidates may not sit this syllabus in the same series as 7115.						

Cambridge International Mathematics			0607			
Option code	Candidates take components	Available to private candidates?	Component code	Component title	Duration	Weighting
AY	12, 32, 52 (Core)	Yes	12	Paper 12 (Core)	45m	25%
BY	22, 42, 62 (Extended)	Yes	22	Paper 22 (Extended)	45m	20%
			32	Paper 32 (Core)	1h45m	60%
			42	Paper 42 (Extended)	2h15m	60%
			52	Paper 52 (Core)	1h10m	15%
			62	Paper 62 (Extended)	1h40m	20%
Notes Candidates may not sit this syllabus in the same series as 0580 or 4024.						

3.5. Cambridge IGCSE syllabuses in alphabetical order:

Chemistry			0620			
Option code	Candidates take components	Available to private candidates?	Component code	Component title	Duration	Weighting
BY	22, 42, 52 (Extended)	Yes	12	Multiple Choice (Core) 12	45m	30%
CY	22, 42, 62 (Extended)	Yes	22	Multiple Choice (Extended) 22	45m	30%
FY	12, 32, 52 (Core)	Yes	32	Theory (Core) 32	1h15m	50%
GY	12, 32, 62 (Core)	Yes	42	Theory (Extended) 42	1h15m	50%
			52	Practical Test 52	1h15m	20%
			62	Alternative to Practical 62	1h	20%
Notes Candidates may not sit this syllabus in the same series as 0652, 5070 or 5129.						

Computer Science			0478			
Option code	Candidates take components	Available to private candidates?	Component code	Component title	Duration	Weighting
AY	12, 22	Yes	12	Paper 12 Theory	1h45m	60%
			22	Paper 22 Problem-Solving & Programming	1h45m	40%
Notes Candidates may not sit this syllabus in the same series as 2210.						

Design & Technology			0445			
Option code	Candidates take components	Available to private candidates?	Component code	Component title	Duration	Weighting
AY	12, 02, 32	-	12	Product Design 12	1h15m	25%
BY	12, 02, 42	-	02	School Based Assessment	-	50%
CY	12, 02, 52	-	32	Resistant Materials 32	1h	25%
DY	12, 32, 82, 92	Yes	42	Systems & Control 42	1h	25%
EY	12, 42, 82, 92	Yes	52	Graphic Products 52	1h	25%
FY	12, 52, 82, 92	Yes	82	June School Based Assessment Mark (02) Carried Forward	-	50%
			92	November School Based Assessment Mark (02) Carried Forward	-	50%

3.5. Cambridge IGCSE syllabuses in alphabetical order:

Drama			0411			
Option code	Candidates take components	Available to private candidates?	Component code	Component title	Duration	Weighting
AY	12, 02	-	12	Written Paper 12	2h30m	40%
CY	12, 82	-	02	Coursework	-	60%
			82	June Coursework Mark (02) Carried Forward	-	60%

Economics			0455			
Option code	Candidates take components	Available to private candidates?	Component code	Component title	Duration	Weighting
Y	12, 22	Yes	12	Multiple Choice 12	45m	30%
			22	Structured Questions 22	2h15m	70%
Notes Candidates may not sit this syllabus in the same series as 2281.						

English as a Second Language (Speaking Endorsement)			0510			
Option code	Candidates take components	Available to private candidates?	Component code	Component title	Duration	Weighting
AY	12, 32, 52 (core)	Yes	12	Reading & Writing (Core) 12	1h30m	70%
BY	12, 32, 82 (core)	Yes	22	Reading & Writing (Extended) 22	2h	70%
CY	12, 32, 92 (core)	Yes	32	Listening (Core) 32	40m	30%
FY	22, 42, 52 (extended)	Yes	42	Listening (Extended) 42	50m	30%
GY	22, 42, 82 (extended)	Yes	52	Speaking 52	15m	-
HY	22, 42, 92 (extended)	Yes	82	June Speaking Mark (52) Carried Forward	-	-
			92	November Speaking Mark (52) Carried Forward	-	-
Notes Candidates may not sit this syllabus in the same series as 0500 or 1123.						

3.5. Cambridge IGCSE syllabuses in alphabetical order:

Enterprise			0454			
Option code	Candidates take components	Available to private candidates?	Component code	Component title	Duration	Weighting
AY	12, 02	-	12	Case Study 12	1h30m	50%
BY	12, 82	Yes	02	Coursework	-	50%
			82	Coursework Mark (02) Carried Forward	-	50%
Notes Materials for the Case Study will be made accessible to centres in July and should be distributed to candidates as soon as they are available.						

Environmental Management			0680			
Option code	Candidates take components	Available to private candidates?	Component code	Component title	Duration	Weighting
Y	12, 22	Yes	12	Theory 12	1h45m	50%
			22	Management in Context 22	1h45m	50%
Notes Candidates may not sit this syllabus in the same series as 5014.						

First Language English (Oral Endorsement)			0500			
Option code	Candidates take components	Available to private candidates?	Component code	Component title	Duration	Weighting
AS	12, 03	-	12	Reading 12	2h	50%
AY	12, 03, 04	-	22	Directed Writing & Composition 22	2h	50%
BS	12, 22	Yes	03	Coursework Portfolio 03	-	50%
BY	12, 22, 04	Yes	04	Speaking & Listening Test 04	12m	-
CS	12, 83, 93	Yes	83	June Coursework Portfolio Mark (03) Carried Forward	-	50%
CY	12, 04, 83, 93	Yes	93	November Coursework Portfolio Mark (03) Carried Forward	-	50%
Notes Candidates may not sit this syllabus in the same series as 0510 or 1123.						

3.5. Cambridge IGCSE syllabuses in alphabetical order:

French			0520			
Option code	Candidates take components	Available to private candidates?	Component code	Component title	Duration	Weighting
Y	12, 22, 03, 42	Yes	12	Listening (Multiple Choice) 12	50m	25%
			22	Reading 22	1h	25%
			03	Speaking 03	10m	25%
			42	Writing 42	1h	25%

Geography			0460			
Option code	Candidates take components	Available to private candidates?	Component code	Component title	Duration	Weighting
AY	12, 22, 03	-	12	Geographical Themes 12	1h45m	45%
BY	12, 22, 42	Yes	22	Geographical Skills 22	1h30m	27.5%
CY	12, 22, 83	Yes	03	Coursework	-	27.5%
			42	Alternative to Coursework 42	1h30m	27.5%
			83	Coursework Mark (03) Carried Forward	-	27.5%
Notes			Candidates may not sit this syllabus in the same series as 2217.			

German			0525			
Option code	Candidates take components	Available to private candidates?	Component code	Component title	Duration	Weighting
Y	12, 22, 03, 42	Yes	12	Listening (Multiple Choice) 12	50m	25%
			22	Reading 22	1h	25%
			03	Speaking 03	10m	25%
			42	Writing 42	1h	25%

3.5. Cambridge IGCSE syllabuses in alphabetical order:

Global Perspectives			0457			
Option code	Candidates take components	Available to private candidates?	Component code	Component title	Duration	Weighting
AY	12, 02, 03	-	12	Written Paper 12	1h15m	35%
EY	12, 03, 82	-	02	Individual Report	-	30%
FY	12, 02, 83	-	03	Team Project	-	35%
GY	12, 82, 83	-	82	June Individual Report Mark (02) Carried Forward	-	30%
HY	12, 03, 92	-	83	June Team Project Mark (03) Carried Forward	-	35%
IY	12, 02, 93	-	92	November Individual Report Mark (02) Carried Forward	-	30%
JY	12, 92, 93	-	93	November Team Project Mark (03) Carried Forward	-	35%

History			0470			
Option code	Candidates take components	Available to private candidates?	Component code	Component title	Duration	Weighting
AY	12, 22, 03	-	12	Paper 12	2h	40%
BY	12, 22, 42	Yes	22	Paper 22	2h	33%
CY	12, 22, 83	Yes	03	Coursework	-	27%
			42	Alternative to Coursework 42	1h	27%
			83	Coursework Mark (03) Carried Forward	-	27%
Notes			Candidates may not sit this syllabus in the same series as 2147.			

Information & Communication Technology			0417			
Option code	Candidates take components	Available to private candidates?	Component code	Component title	Duration	Weighting
EY	12, 02, 03	Yes	12	Theory 12	2h	40%
			02	Practical Test 02	2h30m	30%
			03	Practical Test 03	2h30m	30%
Notes			The practical tests are available for a period of one day. The window for each test can be found in the timetable. If entries are made for a new Practical Test after the final entry closing date, please contact Customer Services so that the source files can be made available.			

3.5. Cambridge IGCSE syllabuses in alphabetical order:

Islamiyat

0493

Option code	Candidates take components	Available to private candidates?
AY	12, 22	Yes

Component code	Component title	Duration	Weighting
12	Paper 12	1h30m	50%
22	Paper 22	1h30m	50%

Literature in English

0475

Option code	Candidates take components	Available to private candidates?
AY	12, 22	Yes
BY	12, 32, 42	Yes
CY	12, 32, 05	-
DY	12, 32, 85	Yes

Component code	Component title	Duration	Weighting
12	Poetry & Prose 12	1h30m	50%
22	Drama 22	1h30m	50%
32	Drama (Open Text) 32	45m	25%
42	Unseen 42	1h15m	25%
05	Coursework	-	25%
85	Coursework Mark (05) Carried Forward	-	25%

Notes Candidates may not sit this syllabus in the same series as 0408 or 2010.

Mathematics (Without Coursework)

0580

Option code	Candidates take components	Available to private candidates?
AY	12, 32 (Core)	Yes
BY	22, 42 (Extended)	Yes

Component code	Component title	Duration	Weighting
12	Paper 12 (Core)	1h	35%
22	Paper 22 (Extended)	1h30m	35%
32	Paper 32 (Core)	2h	65%
42	Paper 42 (Extended)	2h30m	65%

Notes Candidates may not sit this syllabus in the same series as 0607 or 4024.

3.5. Cambridge IGCSE syllabuses in alphabetical order:

Music			0410			
Option code	Candidates take components	Available to private candidates?	Component code	Component title	Duration	Weighting
BY	12, 82, 83, 92, 93	-	12	Listening 12	c.1h15m	40%
Y	12, 02, 03	-	02	Performing	-	30%
			03	Composing	-	30%
			82	June Performing Mark (02) Carried Forward	-	30%
			83	June Composing Mark (03) Carried Forward	-	30%
			92	November Performing Mark (02) Carried Forward	-	30%
			93	November Composing Mark (03) Carried Forward	-	30%

Physical Education			0413			
Option code	Candidates take components	Available to private candidates?	Component code	Component title	Duration	Weighting
AY	12, 02	-	12	Theory 12	1h45m	50%
BY	12, 82	-	02	Coursework	-	50%
CY	12, 92	-	82	June Coursework Mark (02) Carried Forward	-	50%
			92	November Coursework Mark (02) Carried Forward	-	50%

Physical Science			0652			
Option code	Candidates take components	Available to private candidates?	Component code	Component title	Duration	Weighting
BY	22, 42, 52 (Extended)	Yes	12	Multiple Choice Core 12	45m	30%
CY	22, 42, 62 (Extended)	Yes	22	Multiple Choice Extended 22	45m	30%
FY	12, 32, 52 (Core)	Yes	32	Core Theory 32	1h15m	50%
GY	12, 32, 62 (Core)	Yes	42	Extended Theory 42	1h15m	50%
			52	Practical Test 52	1h15m	20%
			62	Alternative to Practical 62	1h	20%

Notes Candidates may not sit this syllabus in the same series as 0620, 0625, 5054, 5070 or 5129.

3.5. Cambridge IGCSE syllabuses in alphabetical order:

Physics			0625			
Option code	Candidates take components	Available to private candidates?	Component code	Component title	Duration	Weighting
BY	22, 42, 52 (Extended)	Yes	12	Multiple Choice (Core) 12	45m	30%
CY	22, 42, 62 (Extended)	Yes	22	Multiple Choice (Extended) 22	45m	30%
FY	12, 32, 52 (Core)	Yes	32	Theory (Core) 32	1h15m	50%
GY	12, 32, 62 (Core)	Yes	42	Theory (Extended) 42	1h15m	50%
			52	Practical Test 52	1h15m	20%
			62	Alternative to Practical 62	1h	20%
Notes Candidates may not sit this syllabus in the same series as 0652, 5054 or 5129.						

Religious Studies			0490			
Option code	Candidates take components	Available to private candidates?	Component code	Component title	Duration	Weighting
AY	12, 22	Yes	12	Paper 12	1h45m	50%
			22	Paper 22	1h45m	50%
Notes Candidates may not sit this syllabus in the same series as 2048 or 2068.						

Sociology			0495			
Option code	Candidates take components	Available to private candidates?	Component code	Component title	Duration	Weighting
AY	12, 22	Yes	12	Paper 12	2h	54%
			22	Paper 22	1h45m	46%
Notes Candidates may not sit this syllabus in the same series as 2251.						

3.5. Cambridge IGCSE syllabuses in alphabetical order:

Spanish			0530			
Option code	Candidates take components	Available to private candidates?	Component code	Component title	Duration	Weighting
Y	12, 22, 03, 42	Yes	12	Listening (Multiple Choice) 12	50m	25%
			22	Reading 22	1h	25%
			03	Speaking 03	10m	25%
			42	Writing 42	1h	25%

Travel & Tourism			0471			
Option code	Candidates take components	Available to private candidates?	Component code	Component title	Duration	Weighting
AY	12, 22	Yes	12	Written Paper 12	2h	60%
BY	12, 03	-	22	Paper 22 Alternative to Coursework	2h30m	40%
CY	12, 83	Yes	03	Coursework	-	40%
			83	Coursework Mark (03) Carried Forward	-	40%

Notes Candidates may not sit this syllabus in the same series as 7096.

World Literature			0408			
Option code	Candidates take components	Available to private candidates?	Component code	Component title	Duration	Weighting
AY	01, 22, 32	-	01	Coursework 01	-	40%
BY	22, 32, 81	-	22	Unseen Poetry 22	1h15m	20%
CY	22, 32, 91	-	32	Set Text 32	1h30m	40%
			81	June Coursework Mark (01) Carried Forward	-	40%
			91	November Coursework Mark (01) Carried Forward	-	40%

Notes Candidates may not sit this syllabus in the same series as 0475 or 2010.

3.6. Cambridge International O Level syllabuses in alphabetical order:

Accounting

7707

Option code	Candidates take components	Available to private candidates?
Y	12, 22	Yes

Component code	Component title	Duration	Weighting
12	Paper 12 (Multiple Choice)	1h15m	30%
22	Paper 22 (Structured)	1h45m	70%

Notes Candidates may not sit this syllabus in the same series as 0452.

Additional Mathematics

4037

Option code	Candidates take components	Available to private candidates?
AY	12, 22	Yes

Component code	Component title	Duration	Weighting
12	Paper 12	2h	50%
22	Paper 22	2h	50%

Notes Candidates may not sit this syllabus in the same series as 0606.

Arabic

3180

Option code	Candidates take components	Available to private candidates?
A	01, 02	Yes

Component code	Component title	Duration	Weighting
01	Composition	1h30m	45%
02	Translation & Reading Comprehension	1h30m	55%

3.6. Cambridge International O Level syllabuses in alphabetical order:

Art & Design			6090			
Option code	Candidates take components	Available to private candidates?	Component code	Component title	Duration	Weighting
A	01, 02	-	01	Coursework	-	50%
B	02, 03	-	02	Externally Set Assignment: Art	8h	50%
C	02, 81, 91	-	03	Externally Set Assignment: Design	8h	50%
			81	June Coursework Mark (01) Carried Forward	-	50%
			91	November Coursework Mark (01) Carried Forward	-	50%
Notes			Candidates may not sit this syllabus in the same series as 0400.			

Biology			5090			
Option code	Candidates take components	Available to private candidates?	Component code	Component title	Duration	Weighting
BY	12, 22, 62	Yes	12	Multiple Choice 12	1h	25%
			22	Theory 22	1h45m	50%
			62	Alternative To Practical 62	1h	25%
Notes			Candidates may not sit this syllabus in the same series as 0610 or 5129.			

Business Studies			7115			
Option code	Candidates take components	Available to private candidates?	Component code	Component title	Duration	Weighting
Y	12, 22	Yes	12	Short Answer & Data Response 12	1h30m	50%
			22	Case Study 22	1h30m	50%
Notes			Candidates may not sit this syllabus in the same series as 0450.			

3.6. Cambridge International O Level syllabuses in alphabetical order:

Chemistry

5070

Option code	Candidates take components	Available to private candidates?
BY	12, 22, 42	Yes

Component code	Component title	Duration	Weighting
12	Multiple Choice 12	1h	27.6%
22	Theory 22	1h30m	51.7%
42	Alternative To Practical 42	1h	20.7%

Notes

Candidates may not sit this syllabus in the same series as 0620, 0652 or 5129.

Combined Science

5129

Option code	Candidates take components	Available to private candidates?
AY	12, 22	Yes

Component code	Component title	Duration	Weighting
12	Multiple Choice 12	1h	29%
22	Theory 22	2h15m	71%

Notes

Candidates may not sit this syllabus in the same series as 0610, 0620, 0625, 0652, 5054, 5070 or 5090.

Commerce

7100

Option code	Candidates take components	Available to private candidates?
Y	12, 22	Yes

Component code	Component title	Duration	Weighting
12	Multiple Choice 12	1h	30%
22	Written 22	2h	70%

Computer Science

2210

Option code	Candidates take components	Available to private candidates?
AY	12, 22	Yes

Component code	Component title	Duration	Weighting
12	Paper 12 Theory	1h45m	60%
22	Paper 22 Problem-Solving & Programming	1h45m	40%

Notes

Candidates may not sit this syllabus in the same series as 0478.

3.6. Cambridge International O Level syllabuses in alphabetical order:

Economics			2281			
Option code	Candidates take components	Available to private candidates?	Component code	Component title	Duration	Weighting
Y	12, 22	Yes	12	Multiple Choice 12	45m	30%
			22	Structured Questions 22	2h15m	70%

Notes

Candidates may not sit this syllabus in the same series as 0455.

English Language

1123

Option code	Candidates take components	Available to private candidates?
Y	12, 22	Yes

Component code	Component title	Duration	Weighting
12	Writing 12	1h30m	50%
22	Reading 22	1h45m	50%

Notes

Candidates may not sit this syllabus in the same series as 0500 or 0510.

Environmental Management

5014

Option code	Candidates take components	Available to private candidates?
Y	12, 22	Yes

Component code	Component title	Duration	Weighting
12	Theory 12	1h45m	50%
22	Management in Context 22	1h45m	50%

Notes

Candidates may not sit this syllabus in the same series as 0680.

Fashion & Textiles

6130

Option code	Candidates take components	Available to private candidates?
B	01, 03	-
D	01, 83	-

Component code	Component title	Duration	Weighting
01	Written	2h	50%
03	Coursework 2	-	50%
83	Coursework 2 Mark (03) Carried Forward	-	50%

3.6. Cambridge International O Level syllabuses in alphabetical order:

Food & Nutrition

6065

Option code	Candidates take components	Available to private candidates?
AY	12, 02	-
BY	12, 82, 92	Yes

Component code	Component title	Duration	Weighting
12	Theory 12	2h	50%
02	Practical	2h30m	50%
82	June Practical Mark (02) Carried Forward	-	50%
92	November Practical Mark (02) Carried Forward	-	50%

Notes Candidates have a Planning Session of 1 hour 30 minutes one week before the Practical Test.

Geography

2217

Option code	Candidates take components	Available to private candidates?
Y	12, 22, 32	Yes

Component code	Component title	Duration	Weighting
12	Geographical Themes 12	1h45m	45%
22	Geographical Skills 22	1h30m	27.5%
32	Geographical Investigations 32	1h30m	27.5%

Notes Candidates may not sit this syllabus in the same series as 0460.

Hinduism

2055

Option code	Candidates take components	Available to private candidates?
Leave Blank	01, 02	Yes

Component code	Component title	Duration	Weighting
01	Hindu Gods & Festivals	1h30m	50%
02	Scriptures, Ethics & Hindu Life	1h30m	50%

History

2147

Option code	Candidates take components	Available to private candidates?
Y	12, 22	Yes

Component code	Component title	Duration	Weighting
12	Paper 12	2h	55%
22	Paper 22	2h	45%

Notes Candidates may not sit this syllabus in the same series as 0470.

3.6. Cambridge International O Level syllabuses in alphabetical order:

Islamic Studies			2068			
Option code	Candidates take components	Available to private candidates?	Component code	Component title	Duration	Weighting
Y	12, 22	Yes	12	History & Scriptures 12	1h30m	50%
			22	Development, Sources, Beliefs & Observances 22	1h30m	50%
Notes			Candidates may not sit this syllabus in the same series as 0490 or 2058.			

Islamiyat			2058			
Option code	Candidates take components	Available to private candidates?	Component code	Component title	Duration	Weighting
AY	12, 22	Yes	12	Paper 12	1h30m	50%
			22	Paper 22	1h30m	50%
Notes			Candidates may not sit this syllabus in the same series as 2068.			

Literature in English			2010			
Option code	Candidates take components	Available to private candidates?	Component code	Component title	Duration	Weighting
AY	12, 22	Yes	12	Poetry & Prose 12	1h30m	50%
			22	Drama 22	1h30m	50%
Notes			Candidates may not sit this syllabus in the same series as 0408 or 0475.			

Mathematics Syllabus D			4024			
Option code	Candidates take components	Available to private candidates?	Component code	Component title	Duration	Weighting
Y	12, 22	Yes	12	Paper 12	2h	50%
			22	Paper 22	2h30m	50%
Notes			Candidates may not sit this syllabus in the same series as 0580 or 0607.			

3.6. Cambridge International O Level syllabuses in alphabetical order:

Pakistan Studies			2059			
Option code	Candidates take components	Available to private candidates?	Component code	Component title	Duration	Weighting
Leave Blank	01, 02	Yes	01	History & Culture of Pakistan	1h30m	50%
			02	Environment of Pakistan	1h30m	50%

Physics			5054			
Option code	Candidates take components	Available to private candidates?	Component code	Component title	Duration	Weighting
BY	12, 22, 42	Yes	12	Multiple Choice 12	1h	27.6%
			22	Theory 22	1h45m	51.7%
			42	Alternative To Practical 42	1h	20.7%
Notes Candidates may not sit this syllabus in the same series as 0625, 0652 or 5129.						

Religious Studies (Bible Knowledge)			2048			
Option code	Candidates take components	Available to private candidates?	Component code	Component title	Duration	Weighting
Y	12, 22	Yes	12	The Portrayal of the Life & Teaching of Jesus 12	1h30m	50%
			22	The Portrayal of the Birth of the Early Church 22	1h30m	50%
Notes Candidates may not sit this syllabus in the same series as 0490.						

Second Language Urdu			3248			
Option code	Candidates take components	Available to private candidates?	Component code	Component title	Duration	Weighting
A	01, 02	Yes	01	Composition & Translation	2h	50%
			02	Language Usage, Summary & Comprehension	1h45m	50%

3.6. Cambridge International O Level syllabuses in alphabetical order:

Sociology			2251			
Option code	Candidates take components	Available to private candidates?	Component code	Component title	Duration	Weighting
Y	12, 22	Yes	12	Paper 12	2h	54%
			22	Paper 22	1h45m	46%
Notes			Candidates may not sit this syllabus in the same series as 0495.			

Statistics			4040			
Option code	Candidates take components	Available to private candidates?	Component code	Component title	Duration	Weighting
Y	12, 22	Yes	12	Paper 12	2h15m	50%
			22	Paper 22	2h15m	50%

Travel & Tourism			7096			
Option code	Candidates take components	Available to private candidates?	Component code	Component title	Duration	Weighting
AY	12, 22	Yes	12	Paper 12	2h	60%
BY	12, 03	-	22	Paper 22 Alternative to Coursework	2h30m	40%
CY	12, 83	Yes	03	Coursework	-	40%
			83	Coursework Mark (03) Carried Forward	-	40%
Notes			Candidates may not sit this syllabus in the same series as 0471.			

3.7. Cambridge International AS & A Level syllabuses in alphabetical order:

* Indicates that the syllabus contains options which can be entered as part of a staged assessment.

Accounting*			9706				
Option code	Candidates take components	Available to private candidates?	Component code	Component title	Duration	Weighting	
						AS Level	A Level
AY	12, 22, 32	Yes	12	AS Level Multiple Choice 12	1h	30%	15%
BY	32, 88	Yes	22	AS Level Structured Questions 22	1h30m	70%	35%
CY	32, 98	Yes	32	A Level Structured Questions 32	3h	-	50%
DY	12, 22, 32, 88, 98	Yes	88	June AS Mark (12, 22) Carried Forward	-	-	50%
SY	12, 22 (AS Level)	Yes	98	November AS Mark (12, 22) Carried Forward	-	-	50%

Arabic			9680				
Option code	Candidates take components	Available to private candidates?	Component code	Component title	Duration	Weighting	
						AS Level	A Level
AY	22, 32, 42, 52	Yes	22	Reading & Writing 22	1h45m	-	35%
			32	Essay 32	1h30m	-	20%
			42	Texts 42	2h30m	-	35%
			52	Prose 52	45m	-	10%
Notes			This syllabus is only available as an A Level.				

Art & Design*			9479				
Option code	Candidates take components	Available to private candidates?	Component code	Component title	Duration	Weighting	
						AS Level	A Level
A	01, 02, 03	-	01	Coursework	-	50%	25%
B	03, 66	-	02	Externally Set Assignment	15h	50%	25%
C	03, 67	-	03	Personal Investigation	-	-	50%
D	01, 02, 03, 66, 67	-	66	June AS Mark (01, 02) Carried Forward	-	-	50%
H	02, 81, 91 (AS Level)	-	67	November AS Mark (01, 02) Carried Forward	-	-	50%
K	02, 03, 81, 91	-	81	June AS Coursework Mark (01) Carried Forward	-	50%	25%
S	01, 02 (AS Level)	-	91	November AS Coursework Mark (01) Carried Forward	-	50%	25%

3.7. Cambridge International AS & A Level syllabuses in alphabetical order:

* Indicates that the syllabus contains options which can be entered as part of a staged assessment.

Biology*

9700

Option code	Candidates take components	Available to private candidates?
AY	12, 22, 33, 42, 52	Yes
BY	42, 52, 85, 88	Yes
CY	42, 52, 95, 98	Yes
DY	12, 22, 33, 42, 52, 85, 88, 95, 98	Yes
HY	12, 22, 34, 42, 52	Yes
IY	12, 22, 34, 42, 52, 85, 88, 95, 98	Yes
S3	12, 22, 33 (AS Level)	Yes
S4	12, 22, 34 (AS Level)	Yes

Component code	Component title	Duration	Weighting	
			AS Level	A Level
12	Multiple Choice 12	1h15m	31%	15.5%
22	AS Level Structured Questions 22	1h15m	46%	23%
33	Advanced Practical Skills 33	2h	23%	11.5%
34	Advanced Practical Skills 34	2h	23%	11.5%
42	A Level Structured Questions 42	2h	-	38.5%
52	Planning, Analysis & Evaluation 52	1h15m	-	11.5%
85	June AS Mark (12, 22, 33) Carried Forward	-	-	50%
88	June AS Mark (12, 22, 34) Carried Forward	-	-	50%
95	November AS Mark (12, 22, 33) Carried Forward	-	-	50%
98	November AS Mark (12, 22, 34) Carried Forward	-	-	50%

Business*

9609

Option code	Candidates take components	Available to private candidates?	Component code	Component title	Duration	Weighting	
						AS Level	A Level
AY	12, 22, 32	Yes	12	Short Answer & Essay 12	1h15m	40%	20%
BY	32, 88	Yes	22	Data Response 22	1h30m	60%	30%
CY	32, 98	Yes	32	Case Study 32	3h	-	50%
DY	12, 22, 32, 88, 98	Yes	88	June AS Mark (12, 22) Carried Forward	-	-	50%
SY	12, 22 (AS Level)	Yes	98	November AS Mark (12, 22) Carried Forward	-	-	50%

3.7. Cambridge International AS & A Level syllabuses in alphabetical order:

* Indicates that the syllabus contains options which can be entered as part of a staged assessment.

Chemistry*

9701

Option code	Candidates take components	Available to private candidates?
AY	12, 22, 33, 42, 52	Yes
BY	42, 52, 85, 88	Yes
CY	42, 52, 95, 98	Yes
DY	12, 22, 33, 42, 52, 85, 88, 95, 98	Yes
HY	12, 22, 34, 42, 52	Yes
IY	12, 22, 34, 42, 52, 85, 88, 95, 98	Yes
S3	12, 22, 33 (AS Level)	Yes
S4	12, 22, 34 (AS Level)	Yes

Component code	Component title	Duration	Weighting	
			AS Level	A Level
12	Multiple Choice 12	1h15m	31%	15.5%
22	AS Level Structured Questions 22	1h15m	46%	23%
33	Advanced Practical Skills 33	2h	23%	11.5%
34	Advanced Practical Skills 34	2h	23%	11.5%
42	A Level Structured Questions 42	2h	-	38.5%
52	Planning, Analysis & Evaluation 52	1h15m	-	11.5%
85	June AS Mark (12, 22, 33) Carried Forward	-	-	50%
88	June AS Mark (12, 22, 34) Carried Forward	-	-	50%
95	November AS Mark (12, 22, 33) Carried Forward	-	-	50%
98	November AS Mark (12, 22, 34) Carried Forward	-	-	50%

Classical Studies*

9274

Option code	Candidates take components	Available to private candidates?
AY	12, 22, 32, 42	Yes
CY	32, 42, 98	Yes
DY	12, 22, 32, 42, 98	Yes
SY	12, 22 (AS Level)	Yes

Component code	Component title	Duration	Weighting	
			AS Level	A Level
12	Written Paper 12	1h30m	50%	25%
22	Written Paper 22	1h30m	50%	25%
32	Written Paper 32	1h30m	-	25%
42	Written Paper 42	1h30m	-	25%
98	November AS Mark (12, 22) Carried Forward	-	-	50%

Computer Science*

9618

Option code	Candidates take components	Available to private candidates?	Component code	Component title	Duration	Weighting	
						AS Level	A Level
AY	12, 22, 32, 42	Yes	12	Theory Fundamentals 12	1h30m	50%	25%
BY	32, 42, 88	Yes	22	Problem Solving & Programming 22	2h	50%	25%
CY	32, 42, 98	Yes	32	Advanced Theory 32	1h30m	-	25%
DY	12, 22, 32, 42, 88, 98	Yes	42	Practical 42	2h30m	-	25%
SY	12, 22 (AS Level)	Yes	88	June AS Mark (12, 22) Carried Forward	-	-	50%
			98	November AS Mark (12, 22) Carried Forward	-	-	50%

Notes

Candidates may not sit this syllabus in the same series as 9626.

3.7. Cambridge International AS & A Level syllabuses in alphabetical order:

* Indicates that the syllabus contains options which can be entered as part of a staged assessment.

Design & Technology*

9705

Option code	Candidates take components	Available to private candidates?	Component code	Component title	Duration	Weighting	
						AS Level	A Level
AY	12, 02, 32, 04	-	12	Written 12	3h	60%	30%
BY	32, 04, 88	-	02	Project 1	-	40%	20%
CY	32, 04, 98	-	32	Written 32	3h	-	30%
DY	12, 02, 32, 04, 88, 98	-	04	Project 2	-	-	20%
HY	12, 32, 04, 92	-	88	June AS Mark (12, 02) Carried Forward	-	-	50%
IY	12, 32, 92, 94	-	92	November Project 1 Mark (02) Carried Forward	-	40%	20%
SB	12, 92 (AS Level)	-	94	November Project 2 Mark (04) Carried Forward	-	-	20%
SY	12, 02 (AS Level)	-	98	November AS Mark (12, 02) Carried Forward	-	-	50%

Design & Textiles*

9631

Option code	Candidates take components	Available to private candidates?	Component code	Component title	Duration	Weighting	
						AS Level	A Level
A	01, 02, 03, 04	-	01	Fibres, Fabrics & Design (AS written)	2h	50%	25%
B	03, 04, 67	-	02	Practical Test (AS)	7h	50%	25%
C	01, 02, 03, 04, 67	-	03	Textile Applications & Technology (A/L written)	2h	-	25%
L	01, 02, 03, 84, 94	-	04	A Level Coursework	-	-	25%
S	01, 02 (AS Level)	-	67	November AS Mark (01, 02) Carried Forward	-	-	50%
			84	June A Level Coursework Mark (04) Carried Forward	-	-	25%
			94	November A Level Coursework Mark (04) Carried Forward	-	-	25%

Digital Media & Design*

9481

Option code	Candidates take components	Available to private candidates?	Component code	Component title	Duration	Weighting	
						AS Level	A Level
A	01, 02, 03	-	01	Portfolio	-	50%	25%
B	03, 66	-	02	Externally Set Assignment	10h	50%	25%
C	03, 67	-	03	Personal Investigation	-	-	50%
D	01, 02, 03, 66, 67	-	66	June AS Mark (01, 02) Carried Forward	-	-	50%
H	02, 81, 91 (AS Level)	-	67	November AS Mark (01, 02) Carried Forward	-	-	50%
K	02, 03, 81, 91	-	81	June AS Portfolio Mark (01) Carried Forward	-	50%	25%
S	01, 02 (AS Level)	-	91	November AS Portfolio Mark (01) Carried Forward	-	50%	25%

3.7. Cambridge International AS & A Level syllabuses in alphabetical order:

* Indicates that the syllabus contains options which can be entered as part of a staged assessment.

Divinity			9011				
Option code	Candidates take components	Available to private candidates?	Component code	Component title	Duration	Weighting	
						AS Level	A Level
AY	12, 22	Yes	12	Prophets of the Old Testament 12	3h	-	50%
BY	12, 32	Yes	22	The Four Gospels 22	3h	-	50%
CY	22, 32	Yes	32	The Apostolic Age 32	3h	-	50%
Notes			This syllabus is only available as an A Level.				

Drama*			9482				
Option code	Candidates take components	Available to private candidates?	Component code	Component title	Duration	Weighting	
						AS Level	A Level
AY	12, 02, 03, 04	-	12	Open-Book Written Examination 12	2h	50%	25%
BY	03, 04, 88	-	02	Practical Drama	-	50%	25%
CY	03, 04, 98	-	03	Theatre-Making & Performing	-	-	25%
DY	12, 02, 03, 04, 88, 98	-	04	Theatre In Context	-	-	25%
HY	12, 82, 92	-	82	June Coursework Mark (02) Carried Forward	-	50%	25%
KY	12, 03, 04, 82, 92	-	88	June AS Mark (12, 02) Carried Forward	-	-	50%
SY	12, 02 (AS Level)	-	92	November Coursework Mark (02) Carried Forward	-	50%	25%
			98	November AS Mark (12, 02) Carried Forward	-	-	50%

Economics*			9708				
Option code	Candidates take components	Available to private candidates?	Component code	Component title	Duration	Weighting	
						AS Level	A Level
AY	12, 22, 32, 42	Yes	12	AS Level Multiple Choice 12	1h	40%	20%
BY	32, 42, 88	Yes	22	AS Level Data Response & Essay 22	1h30m	60%	30%
CY	32, 42, 98	Yes	32	A Level Multiple Choice 32	1h15m	-	15%
DY	12, 22, 32, 42, 88, 98	Yes	42	A Level Data Response & Essays 42	2h15m	-	35%
SY	12, 22 (AS Level)	Yes	88	June AS Mark (12, 22) Carried Forward	-	-	50%
			98	November AS Mark (12, 22) Carried Forward	-	-	50%

3.7. Cambridge International AS & A Level syllabuses in alphabetical order:

* Indicates that the syllabus contains options which can be entered as part of a staged assessment.

English General Paper			8021				
Option code	Candidates take components	Available to private candidates?	Component code	Component title	Duration	Weighting	
						AS Level	A Level
Y	12, 22	Yes	12	Essay 12	1h15m	50%	-
			22	Comprehension 22	1h45m	50%	-
Notes			This syllabus is only available as an AS Level.				

English Language*			9093				
Option code	Candidates take components	Available to private candidates?	Component code	Component title	Duration	Weighting	
						AS Level	A Level
AY	12, 22, 32, 42	Yes	12	Reading Paper 12	2h15m	50%	25%
BY	32, 42, 88	Yes	22	Writing Paper 22	2h	50%	25%
CY	32, 42, 98	Yes	32	Language Analysis Paper 32	2h15m	-	25%
DY	12, 22, 32, 42, 88, 98	Yes	42	Language Topics Paper 42	2h15m	-	25%
SY	12, 22 (AS Level)	Yes	88	June AS Mark (12, 22) Carried Forward	-	-	50%
			98	November AS Mark (12, 22) Carried Forward	-	-	50%
Notes			Candidates may not sit this syllabus in the same series as 8695.				

Environmental Management			8291				
Option code	Candidates take components	Available to private candidates?	Component code	Component title	Duration	Weighting	
						AS Level	A Level
AY	12, 22	Yes	12	Principles of Environmental Management - Paper 12	1h45m	50%	-
			22	Management in Context - Paper 22	1h45m	50%	-
Notes			This syllabus is only available as an AS Level.				

3.7. Cambridge International AS & A Level syllabuses in alphabetical order:

* Indicates that the syllabus contains options which can be entered as part of a staged assessment.

First Language Spanish			8665				
Option code	Candidates take components	Available to private candidates?	Component code	Component title	Duration	Weighting	
						AS Level	A Level
Y	22, 42	Yes	22	Reading & Writing 22	1h45m	50%	-
			42	Texts 42	2h30m	50%	-
Notes This syllabus is only available as an AS Level. Candidates may not sit this syllabus in the same series as 8685 or 9719.							

French			9716				
Option code	Candidates take components	Available to private candidates?	Component code	Component title	Duration	Weighting	
						AS Level	A Level
AY	01, 22, 32, 42	Yes	01	Speaking	20m	-	20%
			22	Reading & Writing 22	1h45m	-	35%
			32	Essay 32	1h30m	-	15%
			42	Texts 42	2h30m	-	30%
Notes This syllabus is only available as an A Level.							

Further Mathematics*			9231				
Option code	Candidates take components	Available to private candidates?	Component code	Component title	Duration	Weighting	
						AS Level	A Level
AY	12, 22, 32, 42	Yes	12	Further Pure Mathematics 12	2h	60%	30%
BY	22, 42, 85	Yes	22	Further Pure Mathematics 22	2h	-	30%
CY	22, 32, 88	Yes	32	Further Mechanics 32	1h30m	40%	20%
DY	22, 42, 95	Yes	42	Further Probability & Statistics 42	1h30m	40%	20%
EY	22, 32, 98	Yes	85	June Further Mechanics AS Mark (12, 32) Carried Forward	-	-	50%
FY	12, 22, 32, 42, 85, 88, 95, 98	Yes	88	June Further Statistics AS Mark (12, 42) Carried Forward	-	-	50%
S3	12, 32 (AS Level)	Yes	95	November Further Mechanics AS Mark (12, 32) Carried Forward	-	-	50%
S4	12, 42 (AS Level)	Yes	98	November Further Statistics AS Mark (12, 42) Carried Forward	-	-	50%

3.7. Cambridge International AS & A Level syllabuses in alphabetical order:

* Indicates that the syllabus contains options which can be entered as part of a staged assessment.

Geography*

9696

Option code	Candidates take components	Available to private candidates?	Component code	Component title	Duration	Weighting	
						AS Level	A Level
AY	12, 22, 32, 42	Yes	12	Core Physical Geography 12	1h30m	50%	25%
BY	32, 42, 88	Yes	22	Core Human Geography 22	1h30m	50%	25%
CY	32, 42, 98	Yes	32	Advanced Physical Geography Options 32	1h30m	-	25%
DY	12, 22, 32, 42, 88, 98	Yes	42	Advanced Human Geography Options 42	1h30m	-	25%
SY	12, 22 (AS Level)	Yes	88	June AS Mark (12, 22) Carried Forward	-	-	50%
			98	November AS Mark (12, 22) Carried Forward	-	-	50%

German

9717

Option code	Candidates take components	Available to private candidates?
AY	01, 22, 32, 42	Yes

Component code	Component title	Duration	Weighting	
			AS Level	A Level
01	Speaking	20m	-	20%
22	Reading & Writing 22	1h45m	-	35%
32	Essay 32	1h30m	-	15%
42	Texts 42	2h30m	-	30%

Notes

This syllabus is only available as an A Level.

Candidates may not sit this syllabus in the same series as 8683.

German Language

8683

Option code	Candidates take components	Available to private candidates?
Y	01, 22, 32	Yes

Component code	Component title	Duration	Weighting	
			AS Level	A Level
01	Speaking	20m	29%	-
22	Reading & Writing 22	1h45m	50%	-
32	Essay 32	1h30m	21%	-

Notes

This syllabus is only available as an AS Level.

Candidates may not sit this syllabus in the same series as 9717.

3.7. Cambridge International AS & A Level syllabuses in alphabetical order:

* Indicates that the syllabus contains options which can be entered as part of a staged assessment.

Global Perspectives & Research*

9239

Option code	Candidates take components	Available to private candidates?
AY	12, 02, 03, 04	-
BY	04, 88	-
CY	04, 98	-
DY	12, 02, 03, 04, 88, 98	-
HY	12, 02, 38, 39 (AS Level)	-
KY	12, 02, 38, 39, 04	-
SY	12, 02, 03 (AS Level)	-

Component code	Component title	Duration	Weighting	
			AS Level	A Level
12	Written Examination 12	1h30m	30%	15%
02	Essay	-	35%	17.5%
03	Team Project	-	35%	17.5%
04	Research Report	-	-	50%
38	June Team Project Mark (03) Carried Forward	-	35%	17.5%
39	November Team Project Mark (03) Carried Forward	-	35%	17.5%
88	June AS Mark (12, 02, 03) Carried Forward	-	-	50%
98	November AS Mark (12, 02, 03) Carried Forward	-	-	50%

Notes

Candidates may not sit this syllabus in the same series as 9980.

History*

9489

Option code	Candidates take components	Available to private candidates?	Component code	Component title	Duration	Weighting	
						AS Level	A Level
AY	12, 22, 32, 42	Yes	12	Document Question 12	1h15m	40%	20%
BY	32, 42, 88	Yes	22	Outline Study 22	1h45m	60%	30%
CY	32, 42, 98	Yes	32	Interpretations Question 32	1h15m	-	20%
DY	12, 22, 32, 42, 88, 98	Yes	42	Depth Study 42	1h45m	-	30%
SY	12, 22 (AS Level)	Yes	88	June AS Mark (12, 22) Carried Forward	-	-	50%
			98	November AS Mark (12, 22) Carried Forward	-	-	50%

3.7. Cambridge International AS & A Level syllabuses in alphabetical order:

* Indicates that the syllabus contains options which can be entered as part of a staged assessment.

Information Technology*

9626

Option code	Candidates take components	Available to private candidates?
AY	12, 02, 32, 04	Yes
BY	32, 04, 88	Yes
CY	32, 04, 98	Yes
DY	12, 02, 32, 04, 88, 98	Yes
SY	12, 02 (AS Level)	Yes

Component code	Component title	Duration	Weighting	
			AS Level	A Level
12	Theory 12	1h45m	50%	25%
02	Practical	2h30m	50%	25%
32	Advanced Theory 32	1h45m	-	25%
04	Advanced Practical	2h30m	-	25%
88	June AS Mark (12, 02) Carried Forward	-	-	50%
98	November AS Mark (12, 02) Carried Forward	-	-	50%

Notes

The practical tests are available for a period of one day. The window for each test can be found in the timetable.

If entries are made for a new Practical Test after the final entry closing date, please contact Customer Services so that the source files can be made available.

Candidates may not sit this syllabus in the same series as 9618.

Islamic Studies*

9488

Option code	Candidates take components	Available to private candidates?	Component code	Component title	Duration	Weighting	
						AS Level	A Level
AY	12, 22, 32, 42	Yes	12	Written Paper 12	1h30m	50%	25%
CY	32, 42, 97	Yes	22	Written Paper 22	1h30m	50%	25%
DY	12, 22, 32, 42, 97	Yes	32	Written Paper 32	1h30m	-	25%
SY	12, 22 (AS Level)	Yes	42	Written Paper 42	1h30m	-	25%
			97	November AS Mark (12, 22) Carried Forward	-	-	50%

Language & Literature in English

8695

Option code	Candidates take components	Available to private candidates?
AY	12, 22	Yes

Notes

This syllabus is only available as an AS Level.

Candidates may not sit this syllabus in the same series as 9093 or 9695.

Component code	Component title	Duration	Weighting	
			AS Level	A Level
12	Writing Paper 12	2h	50%	-
22	Drama, Poetry & Prose Paper 22	2h	50%	-

3.7. Cambridge International AS & A Level syllabuses in alphabetical order:

* Indicates that the syllabus contains options which can be entered as part of a staged assessment.

Law*			9084				
Option code	Candidates take components	Available to private candidates?	Component code	Component title	Duration	Weighting	
						AS Level	A Level
AY	12, 22, 32, 42	Yes	12	Paper 12	1h30m	60%	30%
BY	32, 42, 88	Yes	22	Paper 22	1h30m	40%	20%
CY	32, 42, 98	Yes	32	Paper 32	1h30m	-	25%
DY	12, 22, 32, 42, 88, 98	Yes	42	Paper 42	1h30m	-	25%
SY	12, 22 (AS Level)	Yes	88	June AS Mark (12, 22) Carried Forward	-	-	50%
			98	November AS Mark (12, 22) Carried Forward	-	-	50%

Literature in English*			9695				
Option code	Candidates take components	Available to private candidates?	Component code	Component title	Duration	Weighting	
						AS Level	A Level
AY	12, 22, 32, 42	Yes	12	Drama & Poetry 12	2h	50%	25%
BY	32, 42, 88	Yes	22	Prose & Unseen 22	2h	50%	25%
CY	32, 42, 98	Yes	32	Shakespeare & Drama 32	2h	-	25%
DY	12, 22, 32, 42, 88, 98	Yes	42	Pre- & Post-1900 Poetry & Prose 42	2h	-	25%
SY	12, 22 (AS Level)	Yes	88	June AS Mark (12, 22) Carried Forward	-	-	50%
			98	November AS Mark (12, 22) Carried Forward	-	-	50%

Notes Candidates may not sit this syllabus in the same series as 8695.

Marine Science*			9693				
Option code	Candidates take components	Available to private candidates?	Component code	Component title	Duration	Weighting	
						AS Level	A Level
AY	12, 22, 32, 42	Yes	12	AS Level Theory Paper 12	1h45m	50%	25%
BY	32, 42, 88	Yes	22	AS Data-Handling & Investigative Skills 22	1h45m	50%	25%
CY	32, 42, 67	Yes	32	A Level Theory Paper 32	1h45m	-	25%
DY	12, 22, 32, 42, 67, 88	Yes	42	A Level Data-handling & Investigative Skills 42	1h45m	-	25%
SY	12, 22 (AS Level)	Yes	67	November AS Mark (01, 02) Carried Forward	-	-	50%
			88	June AS Mark (12, 22) Carried Forward	-	-	50%

3.7. Cambridge International AS & A Level syllabuses in alphabetical order:

* Indicates that the syllabus contains options which can be entered as part of a staged assessment.

Mathematics*			9709				
Option code	Candidates take components	Available to private candidates?	Component code	Component title	Duration	Weighting	
						AS Level	A Level
AY	12, 32, 42, 52	Yes	12	Pure Mathematics 1 (12)	1h50m	60%	30%
CY	12, 32, 52, 62	Yes	22	Pure Mathematics 2 (22)	1h15m	40%	-
DY	32, 52, 85	Yes	32	Pure Mathematics 3 (32)	1h50m	-	30%
EY	32, 42, 88	Yes	42	Mechanics (42)	1h15m	40%	20%
GY	32, 62, 88	Yes	52	Probability & Statistics 1 (52)	1h15m	40%	20%
HY	32, 52, 95	Yes	62	Probability & Statistics 2 (62)	1h15m	-	20%
IY	32, 42, 98	Yes	85	June Mechanics AS Mark (12, 42) Carried Forward	-	-	50%
KY	32, 62, 98	Yes	88	June Statistics AS Mark (12, 52) Carried Forward	-	-	50%
LY	12, 32, 42, 52, 85, 88, 95, 98	Yes	95	November Mechanics AS Mark (12, 42) Carried Forward	-	-	50%
NY	12, 32, 52, 62, 88, 98	Yes	98	November Statistics AS Mark (12, 52) Carried Forward	-	-	50%
S4	12, 22 (AS Level)	Yes					
S5	12, 42 (AS Level)	Yes					
S6	12, 52 (AS Level)	Yes					

Notes	Option S4 cannot be used as part of a staged assessment.
-------	--

Media Studies*

9607

Option code	Candidates take components	Available to private candidates?
A	01, 02, 03, 04	-
C	03, 04, 67	-
EY	03, 04, 88	-
FY	01, 02, 03, 04, 67, 88	-
H	02, 81, 91 (AS Level)	-
K	02, 03, 04, 81, 91	-
L	02, 04, 81, 83, 91, 93	-
S	01, 02 (AS Level)	-

Component code	Component title	Duration	Weighting	
			AS Level	A Level
01	Foundation Portfolio	-	50%	25%
02	Media Texts & Contexts	2h	50%	25%
03	Advanced Portfolio	-	-	25%
04	Critical Perspectives	2h	-	25%
67	November AS Mark (01, 02) Carried Forward	-	-	50%
81	June Foundation Portfolio Mark (01) Carried Forward	-	50%	25%
83	June A Level Advanced Portfolio Mark (03) Carried Forward	-	-	25%
88	June AS Mark (01, 22) Carried Forward	-	-	50%
91	November Foundation Portfolio Mark (01) Carried Forward	-	50%	25%
93	November A Level Advanced Portfolio Mark (03) Carried Forward	-	-	25%

3.7. Cambridge International AS & A Level syllabuses in alphabetical order:

* Indicates that the syllabus contains options which can be entered as part of a staged assessment.

Music*

9483

Option code	Candidates take components	Available to private candidates?	Component code	Component title	Duration	Weighting	
						AS Level	A Level
AY	12, 02, 03, 04	-	12	Listening 12	2h	60%	30%
BY	12, 02, 03, 05	-	02	Practical Music	-	40%	20%
CY	12, 02, 04, 05	-	03	Extended Performance	-	-	25%
DY	03, 04, 88	-	04	Extended Composition	-	-	25%
EY	03, 05, 88	-	05	Investigating Music	-	-	25%
FY	04, 05, 88	-	82	June AS Practical Music Mark (02) Carried Forward	-	40%	20%
HY	03, 04, 98	-	88	June AS Mark (12, 02) Carried Forward	-	-	50%
JY	03, 05, 98	-	92	November AS Practical Music Mark (02) Carried Forward	-	40%	20%
KY	04, 05, 98	-	98	November AS Mark (12, 02) Carried Forward	-	-	50%
LY	12, 02, 03, 04, 88, 98	-					
MY	12, 02, 03, 05, 88, 98	-					
NY	12, 02, 04, 05, 88, 98	-					
PY	12, 03, 04, 82, 92	-					
QY	12, 03, 05, 82, 92	-					
RY	12, 04, 05, 82, 92	-					
SB	12, 82, 92 (AS Level)	-					
SY	12, 02 (AS Level)	-					

Physics*

9702

Option code	Candidates take components	Available to private candidates?
AY	12, 22, 33, 42, 52	Yes
BY	42, 52, 85, 88	Yes
CY	42, 52, 95, 98	Yes
DY	12, 22, 33, 42, 52, 85, 88, 95, 98	Yes
HY	12, 22, 34, 42, 52	Yes
IY	12, 22, 34, 42, 52, 85, 88, 95, 98	Yes
S3	12, 22, 33 (AS Level)	Yes
S4	12, 22, 34 (AS Level)	Yes

Component code	Component title	Duration	Weighting	
			AS Level	A Level
12	Multiple Choice 12	1h15m	31%	15.5%
22	AS Level Structured Questions 22	1h15m	46%	23%
33	Advanced Practical Skills 33	2h	23%	11.5%
34	Advanced Practical Skills 34	2h	23%	11.5%
42	A Level Structured Questions 42	2h	-	38.5%
52	Planning, Analysis & Evaluation 52	1h15m	-	11.5%
85	June AS Mark (12, 22, 33) Carried Forward	-	-	50%
88	June AS Mark (12, 22, 34) Carried Forward	-	-	50%
95	November AS Mark (12, 22, 33) Carried Forward	-	-	50%
98	November AS Mark (12, 22, 34) Carried Forward	-	-	50%

3.7. Cambridge International AS & A Level syllabuses in alphabetical order:

* Indicates that the syllabus contains options which can be entered as part of a staged assessment.

Psychology*			9990				
Option code	Candidates take components	Available to private candidates?	Component code	Component title	Duration	Weighting	
						AS Level	A Level
AY	12, 22, 32, 42	Yes	12	Approaches, Issues & Debates 12	1h30m	50%	25%
BY	32, 42, 88	Yes	22	Research Methods 22	1h30m	50%	25%
CY	32, 42, 98	Yes	32	Specialist Options: Theory 32	1h30m	-	25%
DY	12, 22, 32, 42, 88, 98	Yes	42	Specialist Options: Application 42	1h30m	-	25%
SY	12, 22 (AS Level)	Yes	88	June AS Mark (12, 22) Carried Forward	-	-	50%
			98	November AS Mark (12, 22) Carried Forward	-	-	50%

Sociology*			9699				
Option code	Candidates take components	Available to private candidates?	Component code	Component title	Duration	Weighting	
						AS Level	A Level
AY	12, 22, 32, 42	Yes	12	Socialisation, Identity & Methods of Research 12	1h30m	50%	25%
BY	32, 42, 88	Yes	22	The Family 22	1h30m	50%	25%
CY	32, 42, 98	Yes	32	Education 32	1h15m	-	20%
DY	12, 22, 32, 42, 88, 98	Yes	42	Globalisation, Media & Religion 42	1h45m	-	30%
SY	12, 22 (AS Level)	Yes	88	June AS Mark (12, 22) Carried Forward	-	-	50%
			98	November AS Mark (12, 22) Carried Forward	-	-	50%

Spanish			9719				
Option code	Candidates take components	Available to private candidates?	Component code	Component title	Duration	Weighting	
						AS Level	A Level
AY	01, 22, 32, 42	Yes	01	Speaking	20m	-	20%
			22	Reading & Writing 22	1h45m	-	35%
			32	Essay 32	1h30m	-	15%
			42	Texts 42	2h30m	-	30%

Notes This syllabus is only available as an A Level.
Candidates may not sit this syllabus in the same series as 8665 or 8685.

3.7. Cambridge International AS & A Level syllabuses in alphabetical order:

* Indicates that the syllabus contains options which can be entered as part of a staged assessment.

Spanish Language			8685				
Option code	Candidates take components	Available to private candidates?	Component code	Component title	Duration	Weighting	
						AS Level	A Level
Y	01, 22, 32	Yes	01	Speaking	20m	29%	-
			22	Reading & Writing 22	1h45m	50%	-
			32	Essay 32	1h30m	21%	-
Notes			This syllabus is only available as an AS Level. Candidates may not sit this syllabus in the same series as 8665 or 9719.				

Thinking Skills*			9694				
Option code	Candidates take components	Available to private candidates?	Component code	Component title	Duration	Weighting	
						AS Level	A Level
AY	12, 22, 32, 42	Yes	12	Problem Solving 12	1h30m	50%	25%
BY	32, 42, 88	Yes	22	Critical Thinking 22	1h45m	50%	25%
CY	32, 42, 98	Yes	32	Problem Analysis & Solution 32	2h	-	25%
DY	12, 22, 32, 42, 88, 98	Yes	42	Applied Reasoning 42	1h45m	-	25%
SY	12, 22 (AS Level)	Yes	88	June AS Mark (12, 22) Carried Forward	-	-	50%
			98	November AS Mark (12, 22) Carried Forward	-	-	50%

Travel & Tourism*			9395				
Option code	Candidates take components	Available to private candidates?	Component code	Component title	Duration	Weighting	
						AS Level	A Level
AY	12, 02, 32, 42	-	12	The Industry 12	2h30m	67%	33%
BY	32, 42, 88	-	02	Planning & Managing a Travel & Tourism Event 02	-	33%	17%
CY	32, 42, 98	-	32	Destination Marketing 32	1h30m	-	25%
DY	12, 02, 32, 42, 88, 98	-	42	Destination Management 42	1h30m	-	25%
HY	12, 82, 92 (AS Level)	-	82	June Coursework Mark (02) Carried Forward	-	33%	17%
KY	12, 32, 42, 82, 92	-	88	June AS Mark (12, 02) Carried Forward	-	-	50%
SY	12, 02 (AS Level)	-	92	November Coursework Mark (02) Carried Forward	-	33%	17%
			98	November AS Mark (12, 02) Carried Forward	-	-	50%

3.7. Cambridge International AS & A Level syllabuses in alphabetical order:

* Indicates that the syllabus contains options which can be entered as part of a staged assessment.

Urdu			9686				
Option code	Candidates take components	Available to private candidates?	Component code	Component title	Duration	Weighting	
						AS Level	A Level
A	02, 03, 04	Yes	02	Reading & Writing	1h45m	-	39%
			03	Essay	1h30m	-	22%
			04	Texts	2h30m	-	39%
Notes			This syllabus is only available as an A Level. Candidates may not sit this syllabus in the same series as 8686.				

Urdu Language			8686				
Option code	Candidates take components	Available to private candidates?	Component code	Component title	Duration	Weighting	
						AS Level	A Level
SB	02, 03 (AS Level)	Yes	02	Reading & Writing	1h45m	70%	-
			03	Essay	1h30m	30%	-
Notes			This syllabus is only available as an AS Level. Candidates may not sit this syllabus in the same series as 9686.				

3.8. Cambridge International Project syllabus:

Cambridge International Project			9980			
Option code	Candidates take components	Available to private candidates?	Component code	Component title	Duration	Weighting
A	01 only	-	01	Project	-	100%
Notes Candidates may not sit this syllabus in the same series as 9239.						

Part 4: Instructions for entering candidates for Cambridge group awards

4.1 Entering candidates for the Cambridge International Certificate of Education (Cambridge ICE)

4.1.1 Introduction

Cambridge ICE is the group award of the Cambridge International General Certificate of Secondary Education (Cambridge IGCSE) and requires the study of subjects drawn from the following five subject groups:

- Languages (Group 1)
- Humanities & Social Sciences (Group 2)
- Sciences (Group 3)
- Mathematics (Group 4)
- Professional & Creative (Group 5).

Centres benefit from offering their candidates a broad and balanced curriculum. To obtain the Cambridge ICE certificate, candidates must:

- be entered for the award
- gain a passing grade in at least seven ICE qualifying subjects
- gain at least six Cambridge IGCSE subjects from the list of qualifying subjects
- gain at least two passing grades in the Languages subject group (Group 1)
- gain at least one passing grade in each of the other four subject groups (Groups 2–5).

4.1.2 How to enter for Cambridge ICE

You must check that your candidates are eligible to receive the group award before submitting the group award entry. Group award entries are not validated by our system. Therefore submitting entries is not confirmation that group award rules have been met. We will charge the entry fee for the group award even if your candidate is not eligible for it. We will only refund the entry fee if you withdraw the entry before the final entries deadline.

You must enter candidates for the award by including the entry code 'ICE' in addition to the syllabus and option codes for the subjects they will be entering in that series. Add this entry code in the same way as an additional syllabus code. If you are unsure how to add the 'ICE' entry code to your entries, please contact the British Council.

IMPORTANT: You must include the 'ICE' entry code for a Cambridge ICE certificate to be issued. If you do not use the 'ICE' entry code we will not issue a Cambridge ICE certificate but we will issue Cambridge IGCSE and/or O Level certificates as normal. Candidates must be entered for at least one qualifying syllabus in addition to the ICE entry in the series where they are entered for the award. This means that candidates you enter for the ICE award only, without any qualifying syllabuses in the current series, will not be eligible for the award of an ICE certificate.

Note that we may be unable to accept ICE entries we receive after the published late entry closing dates. Please make sure you submit ICE entries before this deadline.

4.1.3 Taking Cambridge ICE over two series

We encourage all candidates to enter for the qualifying subjects in a single exam series. However, candidates can accumulate the results to be used over two exam series, provided both series are within a 13-month period. It is not possible to use results from more than two exam series (e.g., a candidate entering for Cambridge ICE in November 2022 may use results gained in the June 2022 or November 2021 series but not both).

If candidates are entering over two series, consider the following:

- Only use the 'ICE' entry code in the exam series where the candidate is completing the award (i.e., when they are taking the last of their qualifying subjects).
- When making entries for the second exam series towards the Cambridge ICE award, you must provide the centre and candidate numbers used in the first series.
- Any syllabus exclusions in force within a single exam series will also apply to the second series. (For example, a candidate may not enter for both 0620 Chemistry and 0652 Physical Science in the same series. Therefore, these syllabuses cannot both count towards Cambridge ICE certification.)

- If any subjects from the first exam series are taken again in the second series, any grade awarded for the re-sit will not count for Cambridge ICE qualification purposes. Additionally, candidates wishing to enter for Cambridge ICE again must meet the eligibility criteria without using the subject entries previously used towards their first Cambridge ICE. We therefore suggest that any candidates not eligible for the Cambridge ICE certificate in the current series withdraw their Cambridge ICE entry.

4.1.4 List of qualifying subjects for Cambridge ICE

Qualifying syllabuses are shown below. Please note that the list contains all syllabuses available for the June and November 2022 exam series. Syllabuses are available in the November 2022 series unless otherwise indicated and can be found in the Cambridge IGCSE syllabus list in this guide. Subjects available in the June series only are indicated with a (J).

Group 1 – Languages		Group 2 – Humanities & Social Sciences
0500 First Language English (Oral Endorsement)	0535 Italian (J)	0408 World Literature
0510 English as a Second Language (Speaking Endorsement)	0539 Urdu as a Second Language (J)	0448 Pakistan Studies (J)
0520 French	0544 Arabic (J)	0455 Economics
0525 German	0546 Malay (J)	0457 Global Perspectives**
0530 Spanish	0547 Mandarin Chinese (J)	0460 Geography
	0696 First Language Malay (J)	0470 History
		0475 Literature in English
		0490 Religious Studies
		0493 Islamiyat
		0495 Sociology
		0680 Environmental Management*
Group 3 – Sciences	Group 4 – Mathematics	Group 5 – Professional & Creative
0610 Biology	0580 Mathematics (Without Coursework)	0400 Art & Design
0620 Chemistry	0606 Additional Mathematics	0410 Music
0625 Physics	0607 Cambridge International Mathematics	0411 Drama
0652 Physical Science		0413 Physical Education
0680 Environmental Management*		0417 Information & Communication Technology
		0445 Design & Technology
		0450 Business Studies
		0452 Accounting
		0454 Enterprise
		0457 Global Perspectives**
		0471 Travel & Tourism
		0478 Computer Science

* 0680 Environmental Management can be taken as a qualifying subject in either Group 2 or Group 3. The subject cannot be used to satisfy the criteria for both subject groups.

** 0457 Global Perspectives can be taken as a qualifying subject in either Group 2 or Group 5. The subject cannot be used to satisfy the criteria for both subject groups.

4.1.5 Using Cambridge O Level subjects as part of Cambridge ICE

Although Cambridge ICE is the group award for Cambridge IGCSE, candidates can also substitute certain Cambridge O Level results towards the ICE award, in subjects where there is no equivalent Cambridge IGCSE syllabus. Only Cambridge qualifications can be counted towards the Cambridge ICE certificate. **It is not possible to count any other IGCSE-equivalent subject.**

Each Cambridge O Level subject will be assigned to a subject group and will effectively become an adopted Cambridge IGCSE subject for the purposes of Cambridge ICE certification. Candidates must take at least six Cambridge IGCSE subjects to be awarded a Cambridge ICE certificate.

Please find below a list of adopted Cambridge O Level subjects available for Cambridge ICE qualification purposes in 2022. Syllabuses are available in the November 2022 series unless otherwise indicated and can be found in the Cambridge O Level syllabus list in this guide. Syllabuses available in the June series only are indicated (J).

Group 1 – Languages		Group 2 – Humanities & Social Sciences	
3247 First Language Urdu (J) 3248 Second Language Urdu		2048 Religious Studies (Bible Knowledge) 2055 Hinduism 2059 Pakistan Studies 2068 Islamic Studies	
Group 3 – Sciences	Group 4 – Mathematics	Group 5 – Professional & Creative	
	4040 Statistics	6130 Fashion & Textiles 7100 Commerce	

4.1.6 Confirmation of Cambridge ICE entry

When you receive statements of entry for your Cambridge ICE candidates, please check for the following messages. They will be printed at the bottom of the list of syllabus entries for each candidate. The table below indicates the reasons why these messages may appear and what you can do to resolve them:

Message on the Statement of Entry	Explanation	Action
No Message	The candidate has not been entered for Cambridge ICE and does not appear to meet the criteria for the award.	No action required. The candidate does not qualify for Cambridge ICE and has not been entered.
'Entry criteria for ICE fully met in this session.'	The candidate has been entered for Cambridge ICE and would meet the entry criteria based on their entries for the current series.	No action required. The candidate has been entered and qualifies for Cambridge ICE.
'Entry criteria for ICE fully met in this and available previous sessions.'	The candidate has been entered for Cambridge ICE and would meet the entry criteria when their current entries are added to past results.	No action required. The candidate has been entered and qualifies for Cambridge ICE.
'This candidate has met the entry criteria but has not been entered for the ICE.'	The candidate would meet the entry criteria based on their entries for the current series but has not been entered for Cambridge ICE.	If a Cambridge ICE certificate is required, submit an entry as soon as possible.
'This candidate has met the entry criteria in this and available previous sessions but has not been entered for the ICE.'	The candidate would meet the entry criteria when their current entries are added to past results but has not been entered for Cambridge ICE.	If a Cambridge ICE certificate is required, submit an entry as soon as possible.
'Entry criteria for ICE not met in this session. Please check whether previous entry details should have been supplied.'	The candidate has been entered for Cambridge ICE but does not appear to meet the entry criteria based on their entries for the current series.	If the candidate has previous results to be considered, make sure that you have provided correct previous entry details. Otherwise, withdraw the Cambridge ICE entry as the candidate has not satisfied the entry criteria.
'Entry criteria for ICE not met in this and available previous sessions.'	The candidate has been entered for Cambridge ICE but does not appear to meet the entry criteria even when their current entries are added to past results.	Withdraw the Cambridge ICE entry as the candidate has not satisfied the entry criteria.
'Entry criteria for ICE not met because previous session results mean that award rules cannot be satisfied by current entry.'	The candidate has been entered for Cambridge ICE but has failed one of their qualifying subjects in a previous series.	Withdraw the Cambridge ICE entry as the candidate has not satisfied the entry criteria.

If you believe that any of the messages above have appeared on your statements of entry incorrectly, please contact the British Council, providing details of which candidate(s) are affected, and which message has appeared.

4.1.7 Calculating the Cambridge ICE award

Candidates who meet the requirements of the Cambridge ICE award will be awarded a Pass, Merit or Distinction, which will be determined as follows:

Results	Award
Grade A(a) or above in five subjects and Grade C(c) or above in two subjects.	Distinction
Grade C(c) or above in five subjects and Grade F(f) or above in two subjects.	Merit
Grade G(g) or above in seven subjects.	Pass

Where candidates have taken more than the required seven subjects, the Cambridge ICE award will be decided based on their seven best results, irrespective of subject groups. This is providing that the overall Cambridge ICE criteria have been met (e.g., the candidates have gained a passing grade in each of the seven qualifying subjects and have sat at least six Cambridge IGCSE subjects).

To qualify for Cambridge ICE, candidates must obtain at least Grade G(g) (or E(e) for Cambridge O Level subjects) in each of the seven subjects from the subject groups listed in section 4.1.4. In addition, only candidates who have taken at least six Cambridge IGCSE subjects will be awarded a Cambridge ICE certificate.

Candidates who fail to gain Cambridge ICE will be awarded Cambridge IGCSE (and, if applicable, Cambridge O Level) certificates showing the results in the individual subjects taken.

4.1.8 Cambridge ICE results and certificates

Candidates who achieve Cambridge ICE in one exam series will receive a separate Cambridge ICE statement of results, a Cambridge ICE certificate and a Cambridge IGCSE certificate showing the grades achieved in individual subjects.

Candidates who achieve Cambridge ICE over two exam series will receive a statement of results and certificate at the end of the first series for the individual subjects taken at that point. At the end of the second series, candidates will receive a Cambridge IGCSE certificate for the individual subjects taken in the second series, in addition to a Cambridge ICE statement of results and a Cambridge ICE certificate.

Where applicable, we will also issue a Cambridge O Level certificate showing the grades achieved for individual Cambridge O Level subjects.

The Cambridge ICE certificate will only show the level of award obtained and will not list the individual subjects contributing to the award.

4.2 Entering candidates for the Cambridge Advanced International Certificate of Education Diploma (Cambridge AICE)

4.2.1 Introduction

The Cambridge AICE Diploma is a group certificate that requires learners to study a compulsory core subject, Cambridge International AS Level Global Perspectives & Research, with Cambridge International AS & A Level subjects drawn from three curriculum areas:

- Mathematics & Science (Group 1)
- Languages (Group 2)
- Arts & Humanities (Group 3).

There is the option to study Interdisciplinary Subjects (Group 4).

To be eligible to receive the Cambridge AICE Diploma candidates must:

- be entered for the Diploma (entry code 'ADIP')
- obtain at least seven credits including the compulsory Cambridge International AS Level Global Perspectives & Research
- obtain at least one credit in each of the three main curriculum areas (Groups 1, 2 and 3) as well as the compulsory Cambridge International AS Level Global Perspectives & Research.

4.2.2 How to enter for the Cambridge AICE Diploma

You must check that a candidate is eligible to receive the Cambridge AICE Diploma before submitting their entry. Group Award entries are not validated by our system. Therefore submitting entries is not confirmation that group award rules have been met. We will charge the entry fee for the group award even if your candidate is not eligible for it. We will only refund the entry fee if you withdraw the entry before the final entries deadline.

You must enter candidates for the award by including the entry code 'ADIP' when you submit syllabus and option codes for the subjects they will be entering in that series. Add this entry code in the same way as an additional syllabus code. If you are unsure how to add the 'ADIP' entry code to your entries, please contact the British Council.

IMPORTANT: You must include the 'ADIP' entry code for a Cambridge AICE Diploma certificate to be issued. If you do not use the 'ADIP' entry code we will not issue a Cambridge AICE Diploma but we will issue Cambridge International AS & A Level certificates as normal. Candidates must be entered for at least one qualifying syllabus in addition to the ADIP entry in the series where they are entered for the award. This means that candidates you enter for the ADIP award only, without any qualifying syllabuses in the current series, will not be eligible for the award of an AICE Diploma.

Note that we may be unable to accept ADIP entries we receive after the published late entry closing date. Please make sure you submit ADIP entries before this deadline.

4.2.3 Taking the Cambridge AICE Diploma over more than one series

Candidates can accumulate the results to be used towards the Cambridge AICE Diploma over more than one series, provided these series are within a 25-month period. This means that a candidate entering for the Cambridge AICE Diploma in the November 2022 series can only use previous results gained in the November 2020 series or later.

If candidates are taking the Cambridge AICE Diploma over more than one series, the following rules apply:

- Only use the 'ADIP' entry code in the exam series where the candidate is completing the award (i.e., when they are taking the last of their qualifying subjects).
- You must provide entry details from previous exam series so that a candidate can be tracked. For example, in the second series you must provide the candidate's details from the first series, and in any third series you must provide the candidate's details from the second series.
- Candidates cannot count two or more subjects with identical titles or common question papers towards the Cambridge AICE Diploma. This means that a candidate cannot count a Cambridge International AS Level and a Cambridge International A Level in the same subject.
 - An exception to this rule applies for candidates entering for Cambridge International AS & A Level History (9489). They can use up to two History credits towards their Diploma. This can be achieved by taking the A Level or by taking two separate AS Levels (in two different

series) and answering questions on different historical topics in each series. For example, candidates could answer questions from the European section of the papers in 2021 and then answer questions from the American section of the papers in 2022.

- For candidates using two AS Levels in 9489 History, each historical topic can only contribute one credit towards the Diploma. If a candidate achieves a 'mixed' AS Level in 9489 History by answering questions on one topic in the first paper and questions on a different topic in the second paper, the resulting AS Level only counts as one credit. It cannot be combined with another AS Level in History to give two credits. More information on this exception can be found in the group award section of the **syllabus guides** for 9489 History.

You can find a list of qualifying subjects in their respective groups for the AICE award below.

4.2.4 List of qualifying subjects for the Cambridge AICE Diploma

All Cambridge International AS & A Level qualifications can count towards the Cambridge AICE Diploma.

The five curriculum groups are as follows:

Core Group 0	Cambridge Global Perspectives (Compulsory)
Group 1	Mathematics & Sciences
Group 2	Languages
Group 3	Arts & Humanities
Group 4	Interdisciplinary Subjects (Optional)

The following list contains all syllabuses available for the Cambridge AICE Diploma in 2022. Syllabuses are available in the November 2022 series unless otherwise stated and can be found in the Cambridge International AS & A Level syllabus list in this guide. Subjects available in the June series only are indicated (J).

Core Group 0 – Cambridge Global Perspectives (Compulsory)		
9239 Global Perspectives & Research*		
Group 1 – Mathematics & Sciences	Group 2 – Languages	Group 3 – Arts & Humanities
8291 Environmental Management** 9231 Further Mathematics 9618 Computer Science 9626 Information Technology 9693 Marine Science (J) 9700 Biology 9701 Chemistry 9702 Physics 9705 Design & Technology 9709 Mathematics 9990 Psychology	8665 First Language Spanish 8680 Arabic Language (J) 8683 German Language 8685 Spanish Language 8686 Urdu Language 8689 Tamil Language (J) 8695 Language & Literature in English*** 9093 English Language 9680 Arabic 9686 Urdu 9689 Tamil 9716 French 9717 German 9719 Spanish	8291 Environmental Management** 8695 Language & Literature in English*** 9011 Divinity 9084 Law 9274 Classical Studies 9395 Travel & Tourism 9479 Art & Design 9481 Digital Media & Design 9482 Drama 9483 Music 9488 Islamic Studies (J) 9489 History 9607 Media Studies 9609 Business 9631 Design & Textiles 9695 Literature in English 9696 Geography 9699 Sociology 9706 Accounting 9708 Economics 9990 Psychology**
Group 4 – Interdisciplinary Subjects (Optional)		
8021 English General Paper****	9239 Global Perspectives & Research	9694 Thinking Skills

* Candidates who pass the Cambridge International AS & A Level Global Perspectives & Research at A Level meet the compulsory requirement of the Core group (AS Level Global Perspectives & Research). They have one credit left which counts in Group 4 to contribute to the overall requirement of seven credits.

** 8291 Environmental Management and 9990 Psychology can be taken as a qualifying subject in either Group 1 or Group 3. Each subject can only be used to fulfil the criteria for a single subject group.

*** 8695 Language & Literature in English can be taken as a qualifying subject in either Group 2 or Group 3. This subject can only be used to fulfil the criteria for a single subject group.

**** 8021 English General Paper can only be taken as a qualifying syllabus in Group 4 – Interdisciplinary Subjects.

4.2.5 Cambridge AICE Diploma credit system

The Cambridge AICE Diploma will be awarded based on the following points system:

- A Cambridge International A Level will count as two credits.
- A Cambridge International AS Level will count as one credit.

The following combinations are therefore valid:

Cambridge International A Level (2 credits)	Cambridge International AS Level (1 credit)	Cambridge International AS Level Global Perspectives & Research (1 credit)*	Total credits
3	0	1	7
2	2	1	7
1	4	1	7
0	6	1	7

* Candidates who pass the Cambridge International AS & A Level Global Perspectives & Research at A Level meet the compulsory requirement of the Core group (AS Level Global Perspectives & Research) and have one credit left which counts in Group 4 to contribute to the overall requirement of seven credits.

4.2.6 Calculating the Cambridge AICE Diploma

To qualify for the Cambridge AICE Diploma, candidates must pass the subject in Core Group 0 and at least one subject in each of groups 1, 2 and 3. Candidates must obtain at least Grade E(e) at Cambridge International A Level or Grade e(e) at Cambridge International AS Level. In addition, candidates must pass enough qualifying subjects to gain at least seven Cambridge AICE credits overall. One of these must be 9239 Global Perspectives & Research.

Candidates who meet the requirements of the Cambridge AICE Diploma will be awarded a Pass, Merit or Distinction. Candidates will be allocated points according to the grades they achieve in each subject as follows:

Cambridge International A Level grade achieved	Points for Cambridge International A Level study	Cambridge International AS Level grade achieved	Points for Cambridge International AS Level study
A*	140	a	60
A	120	b	50
B	100	c	40
C	80	d	30
D	60	e	20
E	40		

Candidates may take more than the required number of credits. The rules in such cases are that the grade they achieve for Cambridge International AS & A Level Global Perspectives & Research (Grade E(e)/e(e) or better) will always count. When they have taken and passed at least one subject at Grade E(e)/e(e) or better from each curriculum/subject group (1, 2 and 3), the best total of credits will then be counted for the AICE Diploma. This is irrespective of the curriculum/subject group, to the maximum of six further credits required. **Note:** a maximum of two credits can be used from Group 4 in this calculation.

If a candidate is using an A Level outcome for their counting Global Perspectives they may also use one but not both of any outcome for General Paper (available at AS Level only) or Thinking Skills (available at AS or A Level). Consequently, this would mean allowing the use of an outcome in A Level Thinking Skills for a candidate using their A Level Global Perspectives, even though this will exceed the two credit limit for Group 4. We will only allow this where this combination gives them their best overall outcome.

If a candidate's best overall outcome is achieved through a combination of an A Level Global Perspectives and three A Levels we will allow this, even though it equates to eight credits. The maximum number of points a candidate can be awarded for the Cambridge AICE Diploma is 420. The award the candidate receives is then determined as follows:

Total score	Award (if Cambridge AICE criteria are met)
360 to 420	Cambridge AICE Diploma with Distinction
250 to 359	Cambridge AICE Diploma with Merit
140 to 249	Cambridge AICE Diploma at Pass Level
Below 140	No Cambridge AICE Diploma

Candidates who fail to gain the Cambridge AICE Diploma will be awarded Cambridge International AS & A Level certificates showing the results in the individual subjects taken.

4.2.7 Cambridge AICE Diploma results and certificates

Candidates who complete the Cambridge AICE Diploma in one series will receive a statement of results with an asterisk against the subjects that contributed to the total point score, a certificate showing the grades achieved in individual subjects, and a separate Cambridge AICE Diploma certificate.

Candidates taking the Cambridge AICE Diploma over more than one series will receive a statement of results and certificate at the end of each series as applicable. They will also receive a separate Cambridge AICE Diploma certificate at the end of the final exam series.

The statement of results will show the type of award, the aggregate total point score, the individual subject points and an asterisk against the subjects that contributed to the total point score. An aggregate point score will not be reported on the Cambridge AICE Diploma statement of results for candidates who fail.

4.2.8 Re-sitting the Cambridge AICE Diploma

Candidates can re-sit the Cambridge AICE Diploma if all results counting towards the re-sit fall within a 25-month period. They can also re-sit individual subjects. In this case, the result for 9239 Global Perspectives & Research will be used and then the best six credits, which fulfil the requirements described in section 4.2.6.

Candidates re-sitting the Cambridge AICE Diploma using results over multiple series will not receive a new Diploma if they:

- do not achieve better grades in November 2022; or
- do not pass the subjects entered in November 2022; or
- only qualify for the Diploma using subjects from previous series.

Issuing a new Diploma for these candidates would mean certifying the same result twice. The November 2022 Cambridge AICE Diploma entry for these candidates will be set to 'X' as 'No Result'. We will notify the centre on the date results are issued.

Index

Cambridge IGCSE syllabuses in syllabus code order

Code	Syllabus	Page
0400	Art & Design	12
0408	World Literature	22
0410	Music	20
0411	Drama	15
0413	Physical Education	20
0417	Information & Communication Technology	18
0445	Design & Technology	14
0450	Business Studies	13
0452	Accounting	12
0454	Enterprise	16
0455	Economics	15
0457	Global Perspectives	18
0460	Geography	17
0470	History	18
0471	Travel & Tourism	22
0475	Literature in English	19
0478	Computer Science	14
0490	Religious Studies	21
0493	Islamiyat	19
0495	Sociology	21
0500	First Language English (Oral Endorsement)	16
0510	English as a Second Language (Speaking Endorsement)	15
0520	French	17
0525	German	17
0530	Spanish	22
0580	Mathematics (Without Coursework)	19
0606	Additional Mathematics	12
0607	Cambridge International Mathematics	13
0610	Biology	13
0620	Chemistry	14
0625	Physics	21
0652	Physical Science	20
0680	Environmental Management	16

Cambridge International O Level syllabuses in syllabus code order

Code	Syllabus	Page
1123	English Language	26
2010	Literature in English	28
2048	Religious Studies (Bible Knowledge)	29
2055	Hinduism	27
2058	Islamiyat	28
2059	Pakistan Studies	29
2068	Islamic Studies	28
2147	History	27
2210	Computer Science	25
2217	Geography	27
2251	Sociology	30
2281	Economics	26
3180	Arabic	23
3248	Second Language Urdu	29
4024	Mathematics Syllabus D	28
4037	Additional Mathematics	23
4040	Statistics	30
5014	Environmental Management	26
5054	Physics	29
5070	Chemistry	25
5090	Biology	24
5129	Combined Science	25
6065	Food & Nutrition	27
6090	Art & Design	24
6130	Fashion & Textiles	26
7096	Travel & Tourism	30
7100	Commerce	25
7115	Business Studies	24
7707	Accounting	23

Cambridge International AS & A Level syllabuses in syllabus code order

Code	Syllabus	Page
8021	English General Paper	36
8291	Environmental Management	36
8665	First Language Spanish	37
8683	German Language	38
8685	Spanish Language	45
8686	Urdu Language	46
8695	Language & Literature in English	40
9011	Divinity	35
9084	Law	41
9093	English Language	36
9231	Further Mathematics	37
9239	Global Perspectives & Research	39
9274	Classical Studies	33
9395	Travel & Tourism	45
9479	Art & Design	31
9481	Digital Media & Design	34
9482	Drama	35
9483	Music	43
9488	Islamic Studies	40
9489	History	39
9607	Media Studies	42
9609	Business	32
9618	Computer Science	33
9626	Information Technology	40
9631	Design & Textiles	34
9680	Arabic	31
9686	Urdu	46
9693	Marine Science	41
9694	Thinking Skills	45
9695	Literature in English	41
9696	Geography	38
9699	Sociology	44
9700	Biology	32
9701	Chemistry	33
9702	Physics	43
9705	Design & Technology	34
9706	Accounting	31
9708	Economics	35
9709	Mathematics	42
9716	French	37
9717	German	38
9719	Spanish	44
9990	Psychology	44

Cambridge International Project Qualification syllabus

Code	Syllabus	Page
9980	Cambridge International Project	47