

MOVING THE NEEDLE

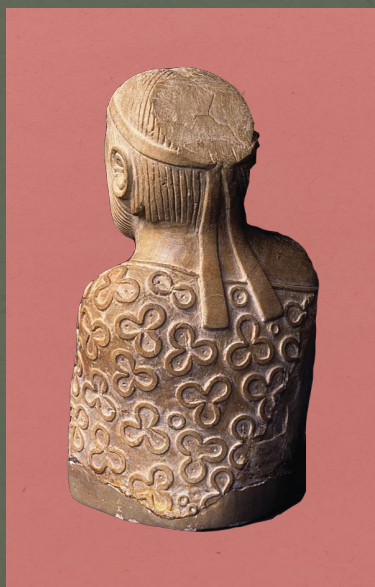
SUSTAINABLE

FASHION

AND

TEXTILE

SYMPOSIUM





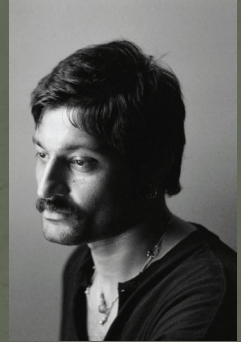
MAARYA REHMAN DEPUTY DIRECTOR PAKISTAN, BRITISH COUNCIL

ON BEHALF OF THE BRITISH COUNCIL, IT IS MY GREAT PLEASURE TO WELCOME YOU TO MOVING THE NEEDLE. THIS SYMPOSIUM MARKS THE NEXT PHASE OF OUR ONGOING WORK TO ADVOCATE FOR A MORE SUSTAINABLE, REGENERATIVE, EQUITABLE AND TRANSPARENT FASHION AND TEXTILE INDUSTRY IN PAKISTAN.

IN 2023, WE LAUNCHED A DEDICATED PROGRAMME TO SUPPORT THIS VISION, POSITIONING THE BRITISH COUNCIL AS A THOUGHT LEADER FOR THE CREATIVE ECONOMY IN PAKISTAN. OUR AIM HAS BEEN TO ENABLE KNOWLEDGE-SHARING AND STRENGTHEN BOTH POLICY AND PRACTICE, WHILE ALSO CREATING OPPORTUNITIES FOR THE SECTOR BY CONVENING, CONNECTING, AND SHOWCASING SUSTAINABLE FASHION INNOVATION. SINCE THEN, WE HAVE PUBLISHED A COMPREHENSIVE REPORT MAPPING PAKISTAN'S SUSTAINABLE FASHION ECOSYSTEM AND AWARDED FIVE GRANTS TO INNOVATIVE PROJECTS ADVANCING SUSTAINABILITY WITHIN THE FIELD.

MOVING THE NEEDLE BUILDS ON THIS MOMENTUM. BY BRINGING TOGETHER DESIGNERS, ARTISANS, RESEARCHERS AND POLICYMAKERS FROM PAKISTAN, THE UK, AND THE WIDER REGION, THE SYMPOSIUM PROVIDES A VITAL PLATFORM TO DEEPEN DIALOGUE, EXCHANGE BEST PRACTICE AND CATALYSE FURTHER ACTION.

OUR SINCERE THANKS GO TO THE SPEAKERS, FACILITATORS, CONTRIBUTORS AND THE DEDICATED TEAM WHO HAVE MADE THIS SYMPOSIUM POSSIBLE. WE LOOK FORWARD TO THE CONVERSATIONS AND COLLABORATIONS THAT WILL EMERGE HERE, AND TO THE PATHWAYS THEY WILL OPEN FOR THE FUTURE OF FASHION IN PAKISTAN.



ZAIN ALI CURATOR

IT'S MY HONOUR TO WELCOME YOU TO MOVING THE NEEDLE. FOR IT TO TAKE PLACE IN LAHORE FEELS APT, AS A CITY WHICH SO BEAUTIFULLY DANCES BETWEEN HISTORY, HERITAGE, CRAFT AND MODERNITY.

MY INTENTION, ABOVE ALL, IN CURATING THIS PROGRAMME HAS BEEN TO CREATE OPPORTUNITIES FOR CONNECTIONS THAT MIGHT NOT OTHERWISE OCCUR, AS ACROSS OUR INDUSTRY, IT'S EASY TO WORK IN ISOLATION, GENERATING SOLUTIONS OUT OF SILOES. EACH PANEL OR WORKSHOP HAS BEEN SHAPED WITH THE AIM OF ENCOURAGING DIALOGUE ACROSS BOUNDARIES — BETWEEN RESEARCH AND PRACTICE, CRAFT AND TECHNOLOGY, LOCAL AND GLOBAL. AND I HOPE YOU'LL FIND SOMETHING EXCITING IN THE DIFFERENCE IN PERSPECTIVES, AS WELL AS THE COMMONALITY IN OUR LOVE FOR TEXTILES.

THE TWO DAYS AHEAD CAST A WIDE NET. WE BEGIN BY GROUNDING OURSELVES — IN OUR BODIES AND WITH INTENTION — BEFORE EXPANDING OUTWARD TO EXPLORE HOW CONSCIOUS DESIGN SITS BETWEEN CLIMATE, HERITAGE, AND INNOVATION, HEARING FROM PAKISTAN'S LONGSTANDING CLIMATE LEADERS AND DESIGN PURVEYORS ON THE GENTLE WISDOM A CENTURIES-OLD CIVILISATION CAN TEACH US. FROM THERE, THE PROGRAMME MOVES THROUGH URGENT QUESTIONS OF GOVERNANCE, BUSINESS, AND REGULATION, PLACING US IN PAKISTAN'S CLIMATE REALITIES OF TODAY. THIS SETS THE SCENE FOR OUR KNOWLEDGE WORKSHOPS, WHETHER BY RETHINKING TEXTILE WASTE, ENGAGING WITH ECO-DESIGN PRINCIPLES, RECONNECTING WITH TEXTILE MYTHOLOGIES, OR UNDERSTANDING LABOUR RIGHTS WITHIN PAKISTAN'S FASHION AND TEXTILE INDUSTRY.

DAY TWO TURNS TOWARD LIVED PRACTICE AND CULTURAL IMAGINATION. WE EXPLORE THE "FAULTLINES OF FABRIC," ACKNOWLEDGING THE CONTRADICTIONS THAT MARK FASHION IN PAKISTAN AND BEYOND, BEFORE MOVING INTO QUESTIONS ON THE ETHICS OF MAKING. THE AFTERNOON IS DEDICATED TO IMMERSIVE CRAFT WORKSHOPS — WEAVING, BLOCK PRINTING, TAARKASHI, AND RALLI — AN OPPORTUNITY TO HONOUR THE SKILL AND WISDOM OF ARTISANAL CRAFT AND RECONNECTING TO IT WITH OUR HANDS. WE SAY GOODBYE THROUGH REFLECTION, COMING BACK TO THE VALUES THAT GUIDE US IN DOING THE WORK.

I AM BEYOND GRATEFUL TO OUR SPEAKERS, FACILITATORS, PARTNERS, AND PARTICIPANTS — FROM ACROSS PAKISTAN, THE UK, SRI LANKA, AND NEPAL — FOR BRINGING THEIR VULNERABILITY, WISDOM, AND DEDICATION TO THIS GATHERING.

THIS SYMPOSIUM TAKES PLACE AT A TIME WHERE IT'S HARD NOT TO FEEL THE WEIGHT OF THE WORLD. PAKISTAN IS AT THE FRONTLINES OF CLIMATE CHANGE, AND THE DEVASTATING FLOODS HAVE CONTINUED TO PROVE THAT THIS IS NOT SOMETHING THAT CAN BE LEFT TO PREPARE FOR IN THE FUTURE. IT IS CALLING FOR TRANSFORMATION NOW.

STAY THE WHOLE WEEKEND, LISTEN CLOSELY, REMAIN CURIOUS, AND LET THE DOTS CONNECT.

FATIMA MULICK SENIOR ARTS MANAGER PAKISTAN,
BRITISH COUNCIL



MOVING THE NEEDLE HAS GROWN FROM A VISION TO PRESERVE OUR HERITAGE, NURTURE INNOVATION AND HONOUR OUR CONNECTION TO THE NATURAL WORLD. AT THE BRITISH COUNCIL, WE BELIEVE IN THE POWER OF CONVENING – OF BRINGING PEOPLE TOGETHER WITH INTENTION TO SPARK SOMETHING LARGER THAN ANY OF US COULD CREATE ALONE.

FROM THE OUTSET, IT WAS IMPORTANT FOR US THAT MOVING THE NEEDLE BE INTERNATIONAL. PAKISTAN IS NOT ONLY A PLACE FACING URGENT CHALLENGES; IT IS ALSO A PLACE OF POSSIBILITY, WHERE THE TIME-HONOURED AND THE CUTTING-EDGE COEXIST, AND WHERE GLOBAL CONVERSATIONS ON SUSTAINABILITY AND CREATIVITY CAN AND MUST TAKE PLACE. THE SYNCHRONICITY OF VISION WITH OUR CURATOR, ZAIN ALI, AND THE STEADFAST DEDICATION OF THE BRITISH COUNCIL ARTS TEAM – LAILA JAMIL, AHSAN ABBAS, HAIDER ALI KHAN AND KHADIJA HUSSAINI - HAVE MADE THIS AMBITION POSSIBLE.

EACH CONTRIBUTOR IN THIS PROGRAMME HAS BEEN CHOSEN WITH GREAT CARE, FOR THE DEPTH OF WISDOM AND PRACTICE THEY BRING. TOGETHER, THEY REPRESENT A WIDE SPECTRUM OF PERSPECTIVES AND THIS DIVERSITY IS DELIBERATE. IT REFLECTS OUR BELIEF THAT MEANINGFUL CHANGE CAN ONLY COME WHEN DIFFERENT VOICES ARE IN CONVERSATION WITH ONE ANOTHER.

AT ITS HEART, MOVING THE NEEDLE IS NOT JUST ABOUT TEXTILES AND FASHION BUT ABOUT RETHINKING OUR RELATIONSHIP WITH MAKING, CONSUMING, AND THE PLANET ITSELF. TEXTILES OFFER US A POWERFUL ENTRY POINT AS THEY ARE LIVING ARCHIVES THAT CONNECT US TO HISTORIES OF RESILIENCE AND IMAGINATION WHILE ALSO POINTING US TOWARD REGENERATIVE FUTURES.

DAY 1

SCHEDULE

DAY 1 – SATURDAY, 20 SEPTEMBER (ALHAMRA ARTS CENTRE, MALL ROAD, LAHORE)

TIME	TITLE	SPEAKERS
10:30 - 11:00	ARRIVALS AND REGISTRATION	BRITISH COUNCIL TEAM
11.00 - 12.00	WELCOME AND BEGINNING TOGETHER	BRITISH COUNCIL TEAM MASHAL CHAUDHRI HANDWEAVER AND TEXTILE RESEARCHER ZAIN ALI CURATOR
12.00 - 1.00	RESILIENT DESIGN: BRIDGING CLIMATE, HERITAGE AND INNOVATION	KAMIL KHAN MUMTAZ ARCHITECT ALI HASSAN HABIB SAMA VERTE
1.00 - 2.20	LUNCH + INNOVATION SHOWCASE	
2.20 - 3.30	THE CASE FOR SUSTAINABILITY: ALIGNING GOVERNANCE AND BUSINESS IN PAKISTAN	DR AYYAZ UDDIN PRGMEA DR NABEEL AMIN NATIONAL COMPLIANCE CENTRE FAZILDA NABEEL LUMS SABAHAT BOKHARI THE INCLUSION LAB WASEEM KHAN COTTON WEB
3.30 - 4.45 KNOWLEDGE WORKSHOPS	RETHINKING TEXTILE WASTE	HASNAIN LILANI DATINI FIBRES LAUREN JUNESTRAND UK FASHION AND TEXTILE ASSOCIATION RACHEL SINGER RELONDON
	PRINCIPLES OF ECO-DESIGN	LEONIE VAAS HIRDARAMANI GROUP SRI LANKA UMAIR AHMED SIDDIQUI TEXTILE INSTITUTE PAKISTAN
	TEXTILE MYTHOLOGIES OF THE COTTON PLANT	CATHERINE BOTTRILL PILIO IMAN HABIB PILIO
	LABOUR AND THE HUMAN STORY OF FASHION IN PAKISTAN	ABDUL REHMAN AANGAN FAROOQ TARIQ HAQOOQ E KHALQ PARTY IRFAN HOAT LABOUR EDUCATION FOUNDATION SALEEMA J. KHAWAJA MUSIC ARTIST
4.45 - 5.15	COFFEE BREAK	
5.15 - 6.30	UNLOCKING INNOVATION : INSIGHTS FROM PAKISTAN, SOUTH ASIA AND THE UK	BISHESHTA SHRESTHA IMPACT HUB KATHMANDU HASNAIN LILANI DATINI FIBRES LAUREN JUNESTRAND UK FASHION AND TEXTILE ASSOCIATION LEONIE VAAS HIRDARAMANI GROUP SRI LANKA RACHEL SINGER RELONDON
6.30 ONWARDS	NETWORKING	

DAY 1

PANEL BRIEFS

RESILIENT DESIGN: BRIDGING CLIMATE, HERITAGE AND INNOVATION

ALI HASSAN HABIB SAMA VERTE
KAMIL KHAN MUMTAZ ARCHITECT

A CONVERSATION INTRODUCING PAKISTAN'S CLIMATE PRIORITIES AND URGENT CHALLENGES, THIS SESSION TOUCHES ON THE TRANSFERABILITY OF CONSCIOUS DESIGN PRINCIPLES FROM MEDIUMS LIKE ARCHITECTURE TO CRAFT, INVITING SPEAKERS TO REFLECT ON THE UNIQUE ROLE PAKISTAN'S NATURAL CLIMATE AND HISTORY OF TEXTILES CAN PLAY IN PAVING THE WAY FORWARD, AND THE INDIGENOUS WISDOM WE CAN TOUCH ON IN SHAPING A MORE SUSTAINABLE FUTURE FOR THE COUNTRY.

UNLOCKING INNOVATION: INSIGHTS FROM PAKISTAN, SOUTH ASIA AND THE UK

BISHESHTA SHRESTHA IMPACT HUB KATHMANDU
HASNAIN LILANI DATINI FIBRES
LAUREN JUNESTRAND UK FASHION AND TEXTILE ASSOCIATION
LEONIE VAAS HIIRDARAMANI GROUP SRI LANKA
RACHEL SINGER RELONDON

THIS SESSION OPENS WITH A PRESENTATION ON SUSTAINABILITY AND INNOVATION IN THE UK FASHION AND TEXTILES SECTOR, SPANNING THE SUPPLY CHAIN FROM RAW MATERIALS TO END-OF-LIFE PRACTICES. IT HIGHLIGHTS DEVELOPMENTS IN NEXT-GENERATION MATERIALS, DYEING AND RECYCLING. A COMPARATIVE DISCUSSION WITH SPEAKERS WILL THEN EXPLORE HOW THESE SHIFTS MAY SHAPE PAKISTAN, AND HOW THE REGION CAN PREPARE WITH CONTEXT-SPECIFIC APPROACHES. THE SESSION CONCLUDES WITH AN OPEN Q&A.

THE CASE FOR SUSTAINABILITY: ALIGNING GOVERNANCE AND BUSINESS IN PAKISTAN

DR AYYAZ UDDIN PRGMEA
DR NABEEL AMIN NATIONAL COMPLIANCE CENTRE
FAZILDA NABEEL LUMS
SABAHAT BOKHARI THE INCLUSION LAB
WASEEM KHAN COTTON WEB

WHAT MAKES THE BUSINESS CASE FOR SUSTAINABILITY IN PAKISTAN? THIS SESSION EXPLORES WHY ALIGNING WITH GLOBAL REGULATIONS IS NOT ONLY NECESSARY BUT ALSO BENEFICIAL FOR LONG-TERM BUSINESS GROWTH. SPEAKERS WILL CONSIDER HOW GOVERNANCE AND BUSINESS CAN WORK TOGETHER TO CREATE STRATEGIES THAT STRENGTHEN COMPETITIVENESS, ACCOUNTABILITY AND IMPACT.

DAY 1

KNOWLEDGE WORKSHOPS

HANDLING TEXTILE WASTE

BISHESHTA SHRESTHA IMPACT HUB KATHMANDU
HASNAIN LILANI DATINI FIBRES
LAUREN JUNESTRAND UK FASHION AND

TEXTILE ASSOCIATION

LEONIE VAAS HIRDARAMANI GROUP SRI LANKA
RACHEL SINGER RELONDON

THIS SESSION OPENS WITH A PRESENTATION ON SUSTAINABILITY AND INNOVATION IN THE UK FASHION AND TEXTILES SECTOR, SPANNING THE SUPPLY CHAIN FROM RAW MATERIALS TO END-OF-LIFE PRACTICES. IT HIGHLIGHTS DEVELOPMENTS IN NEXT-GENERATION MATERIALS, DYEING AND RECYCLING. A COMPARATIVE DISCUSSION WITH SPEAKERS WILL THEN EXPLORE HOW THESE SHIFTS MAY SHAPE PAKISTAN, AND HOW THE REGION CAN PREPARE WITH CONTEXT-SPECIFIC APPROACHES. THE SESSION CONCLUDES WITH AN OPEN Q&A.

LABOUR AND THE HUMAN STORY OF FASHION IN PAKISTAN

ABDUL REHMAN AANGAN
FAROOQ TARIQ HAQOOQ E KHALQ PARTY
IRFAN HOAT LABOUR EDUCATION FOUNDATION
SALEEMA J. KHAWAJA MUSIC ARTIST

THIS WORKSHOP BEGINS WITH A MUSICAL RECITATION OF THE FOLK POETRY OF SHAH HUSSAIN, THE WEAVER POET, WHOSE VERSES CELEBRATE AND HONOUR THE MAKERS AT THE HEART OF TEXTILE TRADITIONS. IT THEN MOVES INTO A DISCUSSION ON HOW WE VALUE THE PEOPLE WHO PRODUCE OUR CLOTHES, BEGINNING WITH INSIGHTS FROM THE BRITISH COUNCIL'S NATIONWIDE REPORT ON THE STATE OF THE TEXTILE AND FASHION WORKFORCE. PARTICIPANTS WILL BE ENCOURAGED TO DEVELOP EMPATHY FOR THE UNSEEN HANDS BEHIND OUR GARMENTS AND GAIN A DEEPER UNDERSTANDING OF THE CHALLENGES FACED BY INDUSTRIAL AND AGRICULTURAL WORKERS. THE WORKSHOP WILL ALSO INTRODUCE PARTICIPANTS TO EXISTING LABOUR LEGISLATION IN THE TEXTILE AND FASHION SECTOR, HIGHLIGHTING WAYS IN WHICH WORKERS' RIGHTS CAN BE BETTER PROTECTED.

TEXTILE MYTHOLOGIES OF THE COTTON PLANT

CATHERINE BOTTRILL PILIO
IMAN HABIB PILIO

IN THIS WORKSHOP, IMAN ENGAGES THE MYTHIC LENS AS A SOURCE OF KNOWLEDGE, MYSTERY, WONDER AND RECONNECTION TO OUR HUMAN ANCESTRY AROUND THE COTTON PLANT. SHARING THE STORY OF INANNA FROM 3000 BCE, SHE REFLECTS ON ADORNMENT: ONCE SYMBOLIC AND COSMOLOGICAL, NOW CONSUMERISM AND WASTE. PARTICIPANTS ARE INVITED TO CONSIDER LAPIZ LAZULI, GOLD, HAND WOVEN COTTON CAPES, AND THE METAPHYSICAL QUESTION: WHICH QUALITIES WOULD YOU SACRIFICE TO BE REUNITED WITH YOUR BELOVED? CATHERINE THEN GROUNDS THE SESSION WITH A PRESENTATION ON ACE VILLAGE — A HOLISTIC PROGRAMME SUPPORTING RESILIENCE IN COTTON FARMING COMMUNITIES, ALIGNING COMMUNITY NEEDS WITH BRAND COMMITMENTS WHILE ENSURING AGENCY, DIGNITY AND CULTURAL HERITAGE ALONGSIDE ENVIRONMENTAL IMPACT.

PRINCIPLES OF ECO-DESIGN

LEONIE VAAS HIRDARAMANI GROUP SRI LANKA
UMAIR AHMED SIDDIQUI TEXTILE INSTITUTE
PAKISTAN

THIS SESSION PROVIDES PARTICIPANTS WITH A COMPREHENSIVE UNDERSTANDING OF SUSTAINABLE PRODUCT DEVELOPMENT, FOCUSING ON ECO-DESIGN AND THE EMERGING DIGITAL PRODUCT PASSPORT (DPP). IT RAISES AWARENESS ABOUT PRESSING ENVIRONMENTAL AND SOCIAL CHALLENGES IN THE FASHION AND TEXTILE INDUSTRY, EMPHASISING RESPONSIBLE DESIGN AND PRODUCTION. PARTICIPANTS WILL EXPLORE ECO-DESIGN PRINCIPLES, INCLUDING STRATEGIES TO REDUCE ENVIRONMENTAL IMPACT, EXTEND PRODUCT LIFE AND PROMOTE CIRCULARITY. THE SESSION INTRODUCES THE DPP AS A TOOL FOR TRANSPARENCY, TRACEABILITY AND COMPLIANCE WITH EU REGULATIONS. THROUGH DISCUSSIONS, CASE STUDIES AND EXERCISES, PARTICIPANTS WILL GAIN INSIGHTS AND TOOLS TO EMBED SUSTAINABILITY AND CONTRIBUTE MEANINGFULLY TO A CIRCULAR, RESPONSIBLE VALUE CHAIN.

DAY 2

SCHEDULE

DAY 2 – SUNDAY, 21 SEPTEMBER (ALHAMRA ARTS CENTRE, MALL ROAD, LAHORE)

TIME	TITLE	SPEAKERS
10.30 - 11.00	ARRIVALS AND REGISTRATION	BRITISH COUNCIL TEAM
11.00 - 12.30	FAULTLINES OF FABRIC	AMNEH SHAIKH-FAROOQUI SOCIAL ENTREPRENEUR BISHESHTA SHRESTHA IMPACT HUB, KATHMANDU KHADIJA RAHMAN GENERATION NAZISH HUSSAIN SECRET STASH ZEIN AHMED LOVE HANDMADE
12.30 – 2.00	LUNCH + INNOVATION SHOWCASE	
2.00 – 3.30	THE ETHICS OF MAKING	AQEELA BANO CIQAM GREEN SOLUTIONS AKRAM HUSSAIN COMMUNITY REPRESENTATIVE KALASH VALLEY FATIMA HUSSAIN LAAJVERD FATIMA RAHU TEXTILE DESIGN AND RESEARCHER FRANCESCO MAZZARELLA CENTRE FOR SUSTAINABLE FASHION ZAHRA HUSSAIN LAAJVERD ZEHRA SHALLWANI DASTAAN TOURS & CRAFTS
3.30 – 6.00 CRAFT WORKSHOPS	HANDLOOM AND FRAME WEAVING	MASHAL CHAUDHRI HANDWEAVER AND TEXTILE RESEARCHER MUBARIK ALI MASTER WEAVER
	BLOCKPRINTING	GHULAM ABBAS SOOMRO MASTER ARTISAN PAARAS ABBAS ANTHROPOLOGIST AND TEXTILE ARTIST
	TAARKASHI	SANA NAQVI TEXTILE ARTIST AND EDUCATOR
	RALLI	FATIMA GHULAM MASTER ARTISAN MASHAL KHAN KAARVAN CRAFTS FOUNDATION MUMTAZ MAI MASTER ARTISAN RIZWANA JAMIL MASTER ARTISAN
6.00 – 6.45	CLOSING TOGETHER	KATIA STEWART BRITISH COUNCIL MASHAL CHAUDHRI HANDWEAVER AND TEXTILE RESEARCHER FATIMA MULICK BRITISH COUNCIL LAILA JAMIL BRITISH COUNCIL ZAIN ALI CURATOR
6.45 ONWARDS	NETWORKING	

DAY 2

PANEL BRIEFS

FAULTLINES OF FABRIC

AMNEH SHAIKH-FAROOQUI SOCIAL
ENTREPRENEUR
BISHESHTA SHRESTHA IMPACT HUB KATHMANDU
KHADIJA RAHMAN GENERATION
NAZISH HUSSAIN SECRET STASH
ZEIN AHMED LOVE HANDMADE

IN PAKISTAN'S FASHION LANDSCAPE, BEAUTY LIVES WITH CONTRADICTION: THE ARTISAN AND THE ALGORITHM, THE HEIRLOOM AND THE HAUL, THE LONGING TO PRESERVE AND THE NEED TO SURVIVE. SUSTAINABLE FASHION IS A DAILY ACT OF RECKONING, A DECISION TO CHOOSE BETTER. THIS SESSION GATHERS DESIGNERS, MAKERS, EDUCATORS AND BUYERS TO SPEAK ACROSS DIFFERENCES, SIT INSIDE TENSION, AND REIMAGINE BEAUTY THAT DOES NOT BREAK PEOPLE OR THE PLANET. PARTICIPANTS WILL REFLECT ON VALUES, ENGAGE IN CANDID DIALOGUE, PRACTICE DECISION-MAKING IN IMPERFECT CONDITIONS, EMBED JUSTICE, CARE AND CREATIVITY, AND LEAVE WITH ONE PERSONAL COMMITMENT TO "CHOOSE BETTER" IN THEIR WORK.

THE ETHICS OF MAKING

AKRAM HUSSAIN COMMUNITY REPRESENTATIVE
KALASH VALLEY
AQEELA BANO CIQAM GREEN SOLUTIONS
FATIMA HUSSAIN LAAJVERD
FATIMA RAHU TEXTILE DESIGN AND RESEARCHER
FRANCESCO MAZZARELLA CENTRE FOR
SUSTAINABLE FASHION
ZAHRA HUSSAIN LAAJVERD
ZEHRA SHALLWANI DASTAAN TOURS & CRAFTS

THIS CURATED PANEL EXPLORES THE ETHICS OF MAKING BY UNPACKING TERMINOLOGIES AND FRAMEWORKS AROUND SUSTAINABLE AND ETHICAL PRODUCTION. MOVING BEYOND SURFACE-LEVEL "ECO" OR "ETHICAL" LABELS, IT ASKS WHAT IT MEANS TO BE RESPONSIBLE IN CONTEXTS OF UNEVEN POWER, ACCESS AND RECOGNITION. PRACTITIONERS AND MAKERS REFLECT ON PARTICIPATION, COLLABORATION, AUTHORSHIP AND CONSENT, RAISING QUESTIONS OF PROFIT SHARING, INTELLECTUAL PROPERTY, FAIR TRADE AND THE VISIBILITY OF UNCREDITED MAKERS. THROUGH CASE STUDIES AND SHARED METHODS, THE SESSION QUESTIONS DOMINANT NARRATIVES AND OFFERS WAYS OF ENGAGING IN MORE JUST AND ETHICAL MAKING CULTURES.

DAY 2

WORKSHOP BRIEFS

HANDLOOM AND FRAME WEAVING

MASHAL CHAUDHRI HANDWEAVER AND
TEXTILE RESEARCHER
MUBARIK ALI MASTER WEAVER

PARTICIPANTS WILL LEARN HOW CLOTH IS MADE BY HAND ON A LOOM, AT TWO SCALES WITH TWO TYPES OF MACHINES: A FLOOR LOOM OPERATED BY THE FEET AND A SIMPLE HANDHELD FRAME. THEY WILL BE INTRODUCED TO MATERIALS AT DIFFERENT STAGES OF PROCESSING – COTTON, FLAX SEED, FLOWER, RAW KAPAZ, CARDED AND BRUSHED SLIVER, HANDSPUN YARN AND MACHINE SPUN YARN – WHICH THEY CAN USE IN THEIR WEAVING. THROUGH THREADING HEDDLES, WARPING THE LOOM, RUNNING PICKS AND WATCHING THE WEAVE BUILD, PARTICIPANTS WILL EXPERIENCE BOTH CONCENTRATION AND FLOW AS THEY LEARN THE PROCESS OF WEAVING.

TAARKASHI

SANA NAQVI TEXTILE ARTIST
AND EDUCATOR

TAARKASHI, OR DRAWN THREAD WORK, IS A DELICATE NEEDLEWORK TRADITION ROOTED IN STILLNESS AND PRECISION. WITH ORIGINS IN SCANDINAVIAN WHITEWORK, IT TRAVELLED ACROSS CONTINENTS AND EMBEDDED INTO SOUTH ASIAN DOMESTIC CRAFTS. IN PAKISTAN, TAARKASHI BECAME PART OF TROUSSEAU, LINENS AND HEIRLOOM CLOTH. THIS WORKSHOP INVITES PARTICIPANTS TO EXPERIENCE THE MEDITATIVE RHYTHM: THREADING A NEEDLE, DRAWING THREADS FROM EVEN-WEAVE FABRIC, REVEALING EXQUISITE PATTERNS. PRECISION AND INTUITION GO HAND IN HAND AS PARTICIPANTS CREATE NEGATIVE SPACE AND SUBTLE GEOMETRIC FORMS WITH EMBROIDERY STITCHES. ALONGSIDE INSTRUCTION, THE SESSION OFFERS REFLECTION, PRESENCE, PATIENCE AND STORYTELLING THROUGH THE QUIET PRACTICE OF TAARKASHI.

BLOCKPRINTING

GHULAM ABBAS SOOMRO MASTER ARTISAN
PAARAS ABBAS ANTHROPOLOGIST AND
TEXTILE ARTIST

THIS WORKSHOP HOLDS SPACE TO UNDERSTAND THE ART OF BLOCK PRINTING IN ITS TRADITIONAL FORM, TRACED BACK TO THE INDUS VALLEY CIVILISATION (C. 2500 BC). TODAY, FEW ARTISANS CONTINUE THE CRAFT IN ITS ORIGINAL FORM. PARTICIPANTS ARE INVITED TO SLOW DOWN AND ENGAGE WITH THE MANY STAGES OF CRAFTING RESIST-PRINTED, VEGETABLE-DYED AJRAK. THE SESSION BEGINS WITH AN AUDIO-VISUAL INTRODUCTION, WITH SAMPLES OF NATURAL MATERIALS, FOLLOWED BY A HANDS-ON LESSON IN KIRYANA – THE APPLICATION OF MUD-RESIST WITH TRADITIONAL HAND-CARVED WOODEN BLOCKS – AND CONCLUDES WITH A DISCUSSION ON THE SURVIVAL OF THIS CENTURIES-OLD CRAFT, AND THE COMMUNITIES THAT CONTINUE TO SUSTAIN IT.

RALLI

FATIMA GHULAM MASTER ARTISAN
MASHAL KHAN KAARVAN CRAFTS FOUNDATION
MUMTAZ MAI MASTER ARTISAN
RIZWANA JAMIL MASTER ARTISAN

THIS INTERACTIVE WORKSHOP IMMERSES PARTICIPANTS IN BAHAWALPUR'S VIBRANT HAND EMBROIDERY AND APPLIQUÉ, LED BY WOMEN ARTISANS WHO HAVE INHERITED AND SUSTAINED THE CRAFT ACROSS GENERATIONS. BEGINNING WITH KAARVAN CRAFTS FOUNDATION'S MISSION OF EMPOWERING WOMEN, ARTISANS SHARE PERSONAL STORIES OF HERITAGE AND MEANING. THE SPACE TRANSFORMS INTO AN OPEN, COMMUNAL FLOOR WHERE PARTICIPANTS SIT TOGETHER AND JOIN IN THE RALLI PATCHWORK PROCESS, BROWSING COLOURFUL CLOTH, THREADS AND NEEDLES. WORKING SIDE-BY-SIDE WITH ARTISANS, EVERYONE STITCHES A COLLECTIVE QUILT. FINISHED APPLIQUÉ PRODUCTS WILL ALSO BE AVAILABLE, OFFERING DIRECT SUPPORT. THE QUILT WILL STAND AS A SYMBOL OF CULTURAL EXCHANGE, SPIRIT AND SHARED BEAUTY.

ZAIN ALI CURATOR

LAILA JAMIL DIRECTOR ARTS PAKISTAN, BRITISH COUNCIL

FATIMA MULICK SENIOR ARTS MANAGER, BRITISH COUNCIL

AHSAN ABBAS SENIOR ARTS MANAGER, BRITISH COUNCIL

HAIDER ALI KHAN ARTS PROGRAMME MANAGER, BRITISH COUNCIL

KHADIJA HUSSAINI ARTS PROGRAMME COORDINATOR, BRITISH COUNCIL

IBTISAM UL HAQ CURATORIAL SUPPORT

MUSHAHID GILANI VISUAL DESIGNER

FATIMA SAJID COORDINATION SUPPORT

EIKON 7 EVENT MANAGEMENT

MTN TEAM



AMNEH SHAIKH-FAROOQUI SOCIAL ENTREPRENEUR

AMNEH SHAIKH-FAROOQUI IS A SOCIAL ENTREPRENEUR, FACILITATOR, AND SUSTAINABILITY ADVOCATE WORKING AT THE INTERSECTION OF GENDER EQUALITY, DECOLONIZATION, AND CULTURAL DESIGN. FOR OVER TWO DECADES, SHE HAS HELPED SHAPE PAKISTAN'S IMPACT SECTOR, LEADING INITIATIVES IN WOMEN'S EMPOWERMENT, ENTREPRENEURSHIP, CLIMATE ACTION, CULTURAL HERITAGE, AND SUSTAINABLE MAKING. HER FACILITATION PRACTICE FOCUSES ON TRANSFORMATIVE LEARNING, PARTICIPATORY DESIGN, AND CONVENING COURAGEOUS CONVERSATIONS THAT SURFACE MARGINALISED NARRATIVES, CENTRE INDIGENOUS VOICES, AND TURN STORYTELLING INTO STRATEGY FOR CHANGE AND BUILDING INCLUSIVE FUTURES. AS CHAIR AND CURATOR OF THE WOMEN OF THE WORLD FESTIVALS IN PAKISTAN, FOUNDER AND CEO OF POLLY AND OTHER STORIES, AND CHIEF STRATEGY OFFICER AT THE BLUE COMPANY, AMNEH CREATES SPACES FOR AUTHENTIC LEADERSHIP AND RADICAL CURIOSITY. SHE IS AN ACUMEN, MILLER CENTER, AND IVLP FELLOW, AND THE AUTHOR OF FEARLESS, A BOOK PROFILING 50 REMARKABLE PAKISTANI WOMEN.



AQEELA BANO CIQAM GREEN SOLUTIONS

AQEELA BEGAN HER CAREER IN 2003 AS A TRAINEE SURVEYOR WITH THE AGA KHAN CULTURAL SERVICE PAKISTAN (AKCSP) AND LATER LED THE DOCUMENTATION OF THE 900-YEAR-OLD ALTI T FORT (2005–2007). SHE CONDUCTED HERITAGE SURVEYS IN HUNZA, MULTAN, AFGHANISTAN, AND TAJIKISTAN, AND LED THE FIRST TECHNICAL TEAM TO SURVEY ATTABAD LAKE AFTER THE 2010 DISASTER. INTERNATIONALLY, SHE HAS REPRESENTED HER WORK AT COP21 PARIS (2015), THE ONE PLANET SUMMIT (2017), AND THE ASIA-PACIFIC CONFERENCE ON INTANGIBLE CULTURAL HERITAGE IN VIETNAM (2018). SHE IS NOW THE CEO OF CIQAM GREEN SOLUTIONS, A WOMEN-LED SOCIAL ENTERPRISE UNDER AKCSP, AND IS RECOGNIZED AS A LEADING WOMEN'S RIGHTS ACTIVIST IN GILGIT-BALTISTAN.



AKRAM HUSSAIN COMMUNITY REPRESENTATIVE KALASH VALLEY

AKRAM HUSSAIN IS AN ACTIVE COMMUNITY LEADER FROM THE KALASH VALLEY, DEDICATED TO PROTECTING, PRESERVING, AND PROMOTING KALASHA CULTURE. HE HAS WORKED WITH THE DEPARTMENT OF ARCHAEOLOGY AND CURRENTLY SERVES AS THE CULTURAL REPRESENTATIVE FOR THE KALASH VALLEY DEVELOPMENT AUTHORITY.



ALI HASSAN HABIB SAMA VERTE

ALI HASSAN HABIB IS THE CEO OF SAMA VERTE, A SOCIAL ENTERPRISE COMPANY OFFERING SOLAR SOLUTIONS AND ENVIRONMENTAL CONSULTING. HE WAS ALSO THE CEO OF WWF-PAKISTAN FOR 19 YEARS FROM 1995-2014, AND BEFORE THAT HE WAS WITH ICI PAKISTAN FOR 12 YEARS. ALI IS A TRAINED WILDERNESS GUIDE AND THE PRESIDENT OF THE ADVENTURE FOUNDATION OF PAKISTAN.



ABDUL REHMAN AANGAN

ABDUL REHMAN IS A SLOW FASHION DESIGNER AND A RESEARCHER WHO WORKS AT THE INTERSECTION OF INDIGENOUS CULTURES, SHARED SOUTH ASIAN NOSTALGIA, LITERATURE, ART AND FASHION. HE IS THE FOUNDER OF A SLOW FASHION LABEL AANGAN WHICH PROMOTES LOCALLY INSPIRED SUSTAINABLE FASHION. HE HAS AUTHORED BRITISH COUNCIL'S LANDMARK NATIONWIDE REPORT ON SUSTAINABLE FASHION IN PAKISTAN. HIS RECENT INITIATIVE IS TRINJAN, AN OPEN FOR ALL COLLECTIVE, WITH AN AIM TO PROMOTE RESEARCH, EDUCATION AND AWARENESS ON SUSTAINABLE FASHION THROUGH LOCAL COMMUNAL PRACTICES. HE ALSO DOCUMENTS AURAL AND VISUAL CULTURE OF MEDIEVAL PUNJABI LITERATURE.



BISHESHTA SHRESTHA IMPACT HUB KATHMANDU

BISHESHTA LEADS ON THE 'ROOTS CIRCULARITY NEPAL' PROGRAMME IN IMPACT HUB KATHMANDU, WHICH AIMS TO DEVELOP PROGRAMMES AND THOUGHT LEADERSHIP AROUND INTRODUCING AND INTEGRATING CIRCULAR ECONOMY PRINCIPLES INTO NEPAL'S ECONOMY. BISHESHTA IS PARTICULARLY INTERESTED IN DEVELOPING ETHICAL FRAMEWORKS AROUND SCALING SUSTAINABLE TEXTILE PRACTICES WITHIN NEPAL, WITH A FOCUS ON GENDER.



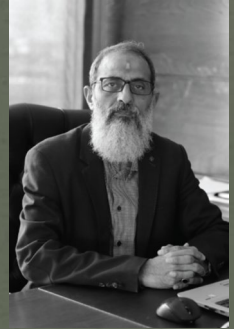
CATHERINE BOTRILL PILIO

OVER 15 YEARS OF ENERGY MANAGEMENT EXPERTISE. CATHERINE HOLDS IN-DEPTH KNOWLEDGE AND EXPERIENCE IN ENVIRONMENTAL STRATEGIES. SHE IS AT THE FOREFRONT OF CREATING ONLINE TOOLS AND SERVICES TO VISUALISE DATA AND CREATE ACTIONABLE INSIGHTS FOR BUSINESS.



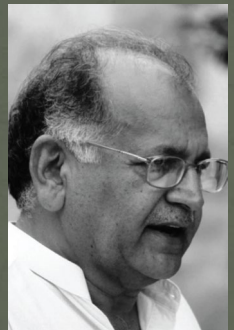
DR AYYAZ UDDIN PRGMEA

DR. AYYAZUDDIN IS THE ELECTED CHAIRMAN OF THE PAKISTAN READYMADE GARMENTS MANUFACTURERS AND EXPORTERS ASSOCIATION (PRGMEA). HE SERVES AS A MEMBER OF THE COUNCIL ON CIRCULARITY AND SUSTAINABILITY UNDER THE MINISTRY OF COMMERCE, GOVERNMENT OF PAKISTAN, AND AS PART OF THE EXPERT ADVISORY PANEL FOR CARBON CREDITS AT THE MINISTRY OF CLIMATE CHANGE. HIS WORK SPANS THE ENTIRE SPECTRUM OF SUSTAINABILITY IN FASHION AND APPAREL, FROM CARBON FOOTPRINT CALCULATIONS TO PRODUCT LIFECYCLE ASSESSMENTS. AS AN OBSERVER AT THE UNFCCC AND HEAD OF FASHION AND TEXTILE DELEGATION FOR COP30 IN BELÉM, BRAZIL (2025), DR. AYYAZUDDIN IS A STRONG ADVOCATE OF INTERGENERATIONAL JUSTICE AND A LEADING VOICE FOR SUSTAINABLE TRANSFORMATION IN PAKISTAN'S TEXTILE AND APPAREL INDUSTRY.



DR NABEEL AMIN NATIONAL COMPLIANCE CENTRE

DR. NABEEL AMIN IS THE HEAD OF COMPLIANCE AT PAKISTAN'S MINISTRY OF COMMERCE AND PROJECT DIRECTOR OF THE NATIONAL COMPLIANCE CENTRE. HIS WORK INVOLVES LEADING NATIONAL POLICIES ON COMPLIANCE, ENVIRONMENTAL REGULATIONS, AND QUALITY ASSURANCE WHILE COLLABORATING WITH INTERNATIONAL ORGANIZATIONS SUCH AS THE WORLD BANK, ILO, AND UN. HE HAS LED GROUNDBREAKING PROJECTS IN ZERO-WASTE TEXTILE PRODUCTION AND WATER-SAVING DYEING TECHNOLOGIES, HELPING INDUSTRIES TRANSITION TO GREENER AND MORE EFFICIENT MANUFACTURING PROCESSES. HIS CONTRIBUTIONS TO ACADEMIA INCLUDE SERVING AS AN ADJUNCT PROFESSOR AT IQRA UNIVERSITY, KARACHI, AND AS A CURRICULUM ADVISOR FOR HEC, TEVTA, AND NAVTTC, HELPING SHAPE PAKISTAN'S HIGHER EDUCATION POLICIES IN DESIGN, TEXTILES, AND SUSTAINABILITY.



FAROOQ TARIQ HAQOOQ KHALQ PARTY

FAROOQ TARIQ IS A LAHORE BASED RIGHTS ACTIVIST AND POLITICAL LEADER. HE HAS BEEN ADVOCATING FOR LABOUR AND PEASANTS RIGHTS FOR MORE THAN FIVE DECADES AND HAS SPENT EIGHT YEARS IN EXILE DURING GENERAL ZIA'S DICTATORSHIP IN NETHERLANDS (1978-86) FOR RESTORATION OF DEMOCRACY IN PAKISTAN. HE IS CURRENTLY THE PRESIDENT OF HAQOOQ E KHALQ PARTY AND GENERAL SECRETARY OF PAKISTAN KISSAN RABITA (PEASANTS COORDINATION) COMMITTEE. HE IS ALSO AN ACTIVE MEMBER OF SEVERAL REGIONAL AND INTERNATIONAL HUMAN RIGHTS ORGANISATIONS INCLUDING SOUTH ASIAN HUMAN RIGHTS (SAHR), JOINT ACTION COMMITTEE FOR PEOPLE'S RIGHTS LAHORE, GLOBAL COUNCIL OF FIGHT INEQUALITY ALLIANCE, AND INTERNATIONAL ORGANISING COMMITTEE OF ASIA EUROPE PEOPLES FORUM (ARPF).



FRANCESCO MAZZARELLA CENTER FOR SUSTAINABLE FASHION

DR FRANCESCO MAZZARELLA'S WORK AT CENTRE FOR SUSTAINABLE FASHION (CSF) AIMS AT EXPLORING WAYS IN WHICH DESIGN ACTIVISM CAN BE USED TO CREATE COUNTER-NARRATIVES TOWARDS SUSTAINABILITY IN FASHION. FRANCESCO'S RESEARCH SPANS THE FIELDS OF DESIGN ACTIVISM, TEXTILE CRAFTSMANSHIP, DECOLONISING FASHION, DESIGN FOR SUSTAINABILITY, SOCIAL INNOVATION, AND PLACE-MAKING. HE IS A MEMBER OF THE DESIGN COUNCIL EXPERT NETWORK, FELLOW OF ADVANCE HE, CO-FOUNDER OF THE DESIS CLUSTER ON 'DESIGN FROM THE MARGINS' AND OF THE CUMULUS WORKING GROUP ON 'DESIGN EDUCATION FOR SOCIAL CHANGE'. PREVIOUSLY, FRANCESCO WAS AHRC DESIGN LEADERSHIP FELLOW RESEARCH ASSOCIATE AT IMAGINATIONLANCASTER, WITH THE AIM TO SUPPORT DESIGN RESEARCH FOR CHANGE. HIS DOCTORAL RESEARCH PROJECT EXPLORED HOW SERVICE DESIGN CAN BE USED TO ACTIVATE TEXTILE ARTISAN COMMUNITIES TO TRANSITION TOWARDS A SUSTAINABLE FUTURE.



FATIMA HUSSAIN LAAJVERD

FATIMA HUSSAIN IS AN ARTIST AND ACADEMIC RESEARCHER WITH OVER A DECADE OF EXPERIENCE IN EXHIBITION-MAKING AND PEDAGOGICAL INTERVENTIONS, WORKING AT THE INTERSECTION OF CULTURE, ART, AND ARCHITECTURE. HER WORK SPECIFICALLY FOCUSES ON THE PRESERVATION OF PRACTICES OF MAKING, EXPLORING THEIR EMBODIED KNOWLEDGE AND MATERIAL HISTORIES. FATIMA'S CURATORIAL APPROACH BLURS THE LINE BETWEEN EXHIBITION-MAKING AND CLASSROOM INTERVENTIONS, FACILITATING COLLABORATION AMONG PRACTITIONERS, STUDENTS, AND COMMUNITIES. HER WORK IN BOTH ART AND ACADEMIA FOCUSES ON CRITICALLY ANALYZING GEOGRAPHIES SHAPED BY PREVAILING NOTIONS OF SPACE, INFLUENCING HOW CREATIVE PRACTICES ARE REPRESENTED IN POSTCOLONIAL ENVIRONMENTS. SHE IS THE FOUNDER OF SECOND PRACTICE, A COLLECTIVE FOR COLLABORATIVE ARTISTIC RESEARCH, AND CO-DIRECTS LAAJVERD, AN INTERDISCIPLINARY COLLECTIVE FOCUSED ON CULTURE, HERITAGE, AND CREATIVE PRACTICE. FATIMA EXHIBITED GLOBALLY AT VENUES INCLUDING THE KARACHI BIENNALE, 17TH ISTANBUL BIENNALE, AND AICON GALLERY LONDON.



FATIMA GHULAM KAARVAN CRAFTS FOUNDATION

IN DERA MASTI, BAHAWALPUR, FATIMA GHULAM GREW UP AS ONE OF TEN SIBLINGS, THE DAUGHTER OF A LABORER WHO TAUGHT HER THE VALUE OF HARD WORK EARLY IN LIFE. DETERMINED TO CARVE OUT HER OWN PATH, FATIMA FOUND HER CALLING IN RALLI EMBROIDERY. SHE SPENT FIVE YEARS APPRENTICING UNDER MUMTAZ MAI, NOT AS A SHADOW, BUT AS A LEARNER READY TO SHAPE HER OWN VOICE THROUGH THE CRAFT. OVER TIME, SHE TRANSFORMED PATCHWORK AND APPLIQUÉ INTO HER SIGNATURE STYLE—BOLD, COLORFUL, AND DEEPLY ROOTED IN RESILIENCE. TODAY, FATIMA STANDS AS BOTH ARTISAN AND MENTOR. SHE IS SHARING RALLI WITH WOMEN IN HER COMMUNITY, NURTURING THE SAME SPIRIT OF CREATIVITY THAT ONCE NURTURED HER. LOOKING TO THE FUTURE, SHE HOPES TO COLLABORATE WITH DESIGNERS TO BRING RALLI'S CULTURAL EMBROIDERY TO NEW AUDIENCES, CARRYING FORWARD HER OWN STORY OF COURAGE, ARTISTRY, AND INDEPENDENCE.



FATIMA RAHU TEXTILE DESIGNER AND RESEARCHER

FATIMA RAHU IS A KARACHI-BASED TEXTILE DESIGNER AND GRADUATE OF IVS (2022), WHERE SHE MAJORED IN WEAVING. HER PRACTICE CENTRES ON INDIGENOUS CRAFT, ETHICAL MAKING, AND MATERIALITY THROUGH NATURAL FIBRES AND BOTANICAL DYES. SHE HAS BEEN A RESIDENT ARTIST AT PROJECT MAKING LAB WITH SHU AND PROJECT HAND-SPUN, A BRITISH COUNCIL-SUPPORTED EXCHANGE, WHERE SHE WORKED WITH ARTISANAL COMMUNITIES IN NORTHERN PAKISTAN TO SUSTAIN ENDANGERED WOOL CRAFT TRADITIONS.



FAZILDA NABEEL LUMS

DR. FAZILDA NABEEL IS A CLIMATE AND WATER GOVERNANCE EXPERT WITH MORE THAN 13 YEARS OF TEACHING AND RESEARCH EXPERIENCE IN THE DEVELOPMENT SECTOR. DR. NABEEL IS AN ADVISOR FOR THE MINISTRY OF CLIMATE CHANGE, GOVERNMENT OF PAKISTAN AND UNITED NATIONS LIVING INDUS INITIATIVE FOR THE ECOLOGICAL RESTORATION OF THE INDUS BASIN IN PAKISTAN. FAZILDA IS ALSO TEACHING COURSES ON THE BUSINESS CASE FOR CLIMATE ACTION AT SULAIMAN DAWOOD SCHOOL OF BUSINESS LUMS UNIVERSITY. SHE COMPLETED HER PH.D IN DEVELOPMENT STUDIES FROM THE UNIVERSITY OF SUSSEX (UK) WITH A RESEARCH FOCUS ON THE POLITICAL ECOLOGY OF GROUNDWATER (NON) GOVERNANCE IN THE INDUS BASIN OF PAKISTAN. SHE HAS WORKED EXTENSIVELY FOR THE GOVERNMENT OF PAKISTAN AND INTERNATIONAL DEVELOPMENT ORGANISATIONS ON A BREADTH OF POLICY ISSUES AT THE INTERSECTION OF CLIMATE AND WATER GOVERNANCE, WITH A SPECIFIC FOCUS ON GENDER JUSTICE.



GHULAM ABBAS SOOMRO MASTER ARTISAN

GHULAM ABBAS SOOMRO IS A MASTER ARTISAN FROM BHIT SHAH, WHO SPECIALISES IN TRADITIONAL BLOCK PRINTING, A MULTIGENERATIONAL HERITAGE CRAFT. HE IS THE FIRST OF A LONG LINEAGE OF MASTER BLOCK PRINTERS TO PIONEER COMBINING THE TRADITIONAL CRAFT WITH MODERN METHODOLOGIES TO DEVISE AN INGENIOUS WORKSHOP APPROACH THAT HAS ENGAGED AUDIENCES ACROSS THE FASHION, TEXTILE AND HIGHER EDUCATION SECTORS IN PAKISTAN AND BEYOND.



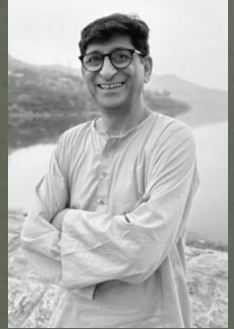
HASNAIN LILANI DATINI FIBRES

HASNAIN LILANI IS A KARACHI-BASED MATERIALS SPECIALIST AND THE DRIVING FORCE BEHIND DATINI FIBRES, UPCYCLING FARM, AND THE SWEATER MUSEUM. A PASSIONATE ADVOCATE FOR SUSTAINABLE TEXTILE PRACTICES, HASNAIN'S EXPERTISE SPANS TEXTILE AND KNITWEAR DESIGN, HANDMADE TEXTILES, AND NATURAL DYEING. HIS CAREER BEGAN AT KOEL UNDER THE MENTORSHIP OF MRS. NOORJEHAN BILGRAMI, FOLLOWED BY SEVERAL YEARS IN THE DENIM INDUSTRY. THIS EXPERIENCE IGNITED HIS FOCUS ON TEXTILE RECYCLING AND DEVELOPING ECO-CONSCIOUS SOLUTIONS FOR GLOBAL POST-CONSUMER TEXTILE WASTE. AS FOUNDER OF DATINI FIBRES, A LEADING RECYCLER OF POST-CONSUMER SWEATER WASTE, HASNAIN SUPPLIES RECYCLED FIBERS TO CLIENTS ACROSS THE UK, ITALY, AND JAPAN. NOTABLY, DATINI FIBRES IS PAKISTAN'S FIRST COMPANY TO ACHIEVE MEMBERSHIP IN THE IWTO. HASNAIN'S EXPERTISE HAS ALSO LED HIM TO SERVE AS A SUSTAINABILITY ADVISOR TO PROMINENT COMPANIES LIKE NYLSTAR & MONTEFIBRE, AND HE CONTRIBUTED TO RENEWCELL OF SWEDEN'S PILOT PROJECT FOR PRODUCING CELLULOSE FIBER FROM TEXTILE WASTE.



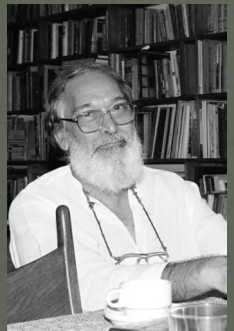
IMAN HABIB PILIO

IMAN HABIB IS AN ANTHROPOLOGIST, SCHOLAR, ARTIST, AND LOVER OF SOUTH ASIAN HERITAGE TRADITIONS. HER MA DISSERTATION ENTITLED "BABA GHUNDI: MONUMENT AND MEMORIAL, INTER-ASIAN DYNAMICS AND MARGINALITY AT THE SHRINE OF BABA GHUNDI IN CHAPURSAN VALLEY, GILGIT-BALTISTAN" WAS AWARDED A DISTINCTION AT 85%. HER CRAFT ENTAILS BRIDGING COMPLEX THEORETICAL KNOWLEDGE WITH EMBEDDED, LIVED ETHNOGRAPHY AND WEAVING STORIES OF THE MOST MARGINALIZED PEOPLE WITH DIGNITY AND MEANING. SHE IS CURRENTLY LEARNING TURKISH TAZHIP, OR QURANIC ILLUMINATION TO LEARN IN-DEPTH COSMOLOGIES OF COLOUR AND FORM. EMBODYING MULTIPLICITY, SHE CURRENTLY WORKS AT THE INTERSECTION OF CLIMATE RESILIENCE, CULTURAL HERITAGE, AND GENDER INEQUITY, FOCUSING ON THE INDIGENOUS KNOWLEDGE APPROACH OF LINKED SOCIAL-ECOLOGICAL SYSTEMS. WITH OVER A DECADE OF PASSIONATE DEDICATION TO TRADITIONAL KNOWLEDGE SYSTEMS, HER SPIRITUAL ROOTS ARE IN DECOLONIAL, ALTERNATE SPACES. SHE HAS A STRONG COMMITMENT TO COMMUNITY, BELONGING, AND WONDER WITH OUR NATURAL WORLD SEEKING "RHIZOMATIC" INTERCONNECTEDNESS. INTERLACING STORY, THEORY, AND ETHNOGRAPHY, HER LATEST ARTIST-SCHOLAR PROJECT AIMS TO CREATE A VISUAL STORYTELLING NARRATIVE FOR THE RELATIONSHIP BETWEEN THE COTTON PLANT OF PUNJAB, THE SOCIO-CULTURAL COMMUNITY IT IS GROWN BY, AND THE FAST FASHION CORPORATE WORLD OF MASS PRODUCTION THAT BUYS IT.



IRFAN HOAT LABOUR EDUCATION FOUNDATION

IRFAN HOAT IS A DEDICATED HUMAN RIGHTS AND ENVIRONMENTAL ACTIVIST, COMMITTED TO SOCIAL AND POLITICAL CHANGE SINCE HIS STUDENT LIFE. WITH OVER 30 YEARS OF EXPERIENCE WORKING WITH INTERNATIONAL AND NATIONAL NGOS, HE HAS PLAYED A VITAL ROLE IN ORGANIZING WORKERS INTO TRADE UNIONS AND PROTECTING THEIR RIGHTS. THROUGH HIS TIRELESS EFFORTS, HE HAS BUILT STRONG GRASSROOTS MOVEMENTS, EMPOWERING COMMUNITIES TO CLAIM JUSTICE, DIGNITY, AND A SUSTAINABLE FUTURE.



KAMIL KHAN MUMTAZ ARCHITECT

KAMIL KHAN MUMTAZ IS A PAKISTANI ARCHITECT IN PRIVATE PRACTICE IN LAHORE. HE WAS TRAINED AT THE ARCHITECTURAL ASSOCIATION, LONDON IN THE 1960'S AFTER WHICH HE RETURNED TO PAKISTAN TO PRACTICE AND TEACH. HE WAS HEAD OF THE OF THE NATIONAL COLLEGE OF ARTS, LAHORE BETWEEN 1966-1975. HE HAS BEEN A MEMEBR OF SEVERAL ARCHITECTURE JURIES AND HAS WIDELY LECTURED IN EUROPE AND ASIA. IN 1985, HE AUTHORED ARCHITECTURE IN PAKISTAN, A CONCEPT MEDIA PUBLICATION.



KHADIJA RAHMAN GENERATION

KHADIJA RAHMAN IS THE CREATIVE DIRECTOR AT GENERATION PAKISTAN, RENOWNED FOR HER ABILITY TO BLEND CREATIVITY, INNOVATION, AND STRATEGIC THINKING INTO IMPACTFUL CAMPAIGNS AND PROJECTS. WITH A STRONG PASSION FOR DESIGN AND STORYTELLING, KHADIJA HAS LED GENERATION PAKISTAN'S CREATIVE TEAM TO NEW HEIGHTS, TRANSFORMING IDEAS INTO ENGAGING VISUAL NARRATIVES THAT RESONATE WITH AUDIENCES ACROSS DIVERSE PLATFORMS.



KATIA STEWART BRITISH COUNCIL

KATIA STEWART IS A CULTURAL CONSULTANT, COACH, AND EXPERIENCED PROJECT MANAGER WITH A BACKGROUND IN DESIGN, CRAFT, AND INTERNATIONAL DEVELOPMENT. WITH NEARLY 20 YEARS OF EXPERIENCE IN LEADING CROSS-SECTOR PROGRAMMES IN THE UK AND GLOBALLY, SHE WORKS AT THE INTERSECTION OF SUSTAINABILITY, EDUCATION, AND CREATIVE INDUSTRIES AND IS CURRENTLY THE SENIOR RELATIONSHIP MANAGER IN THE ARCHITECTURE DESIGN AND FASHION TEAM AT BRITISH COUNCIL BASED IN THE UK. AS THE FORMER GLOBAL PROGRAMME MANAGER FOR CRAFTING FUTURES AT THE BRITISH COUNCIL, SHE LED CRAFT PROJECTS WORKING ACROSS 35 COUNTRIES, SUPPORTING A SUSTAINABLE FUTURE FOR CRAFT, ALIGNING CREATIVE PRACTICE WITH THE UN SUSTAINABLE DEVELOPMENT GOALS. HER WORK INCLUDES EXTENSIVE COLLABORATIONS WITH ARTISANS, DESIGNERS, NGOS, AND ACADEMIC INSTITUTIONS TO SUPPORT INCLUSIVE, RESILIENT, AND FUTURE-FACING DESIGN ECOSYSTEMS. ALONGSIDE PROJECT LEADERSHIP ROLES IN DESIGN STUDIOS AND INTERNATIONAL ORGANISATIONS, SHE HAS SUPPORTED CREATIVE TALENT THROUGH MENTORING, COACHING, AND SKILLS DEVELOPMENT. KATIA IS PASSIONATE ABOUT INNOVATION, CULTURAL HERITAGE, AND SYSTEMS CHANGE AND SHE CONTINUES TO CHAMPION SUSTAINABLE DESIGN PRACTICES THROUGH CONSULTANCY, RESEARCH, AND STRATEGIC PROGRAMME DEVELOPMENT.



LEONIE VAAS HIRDARAMANI APPAREL

DR. LEONIE VAAS IS THE GENERAL MANAGER OF GROUP SUSTAINABILITY AT HIRDARAMANI APPAREL, OVERSEEING OPERATIONS ACROSS SRI LANKA, VIETNAM, BANGLADESH, AND ETHIOPIA. WITH OVER 15 YEARS OF EXPERTISE IN THE TEXTILE INDUSTRY, SHE IS A UNITED NATIONS SDG PIONEER 2021 FOR RESPONSIBLE PRODUCTION THE FIRST SRI LANKAN TO RECEIVE THIS RECOGNITION AND WAS NAMED AMONG ASIA'S SUSTAINABILITY SUPERWOMEN IN 2022. SHE HOLDS A PHD IN SUSTAINABILITY MANAGEMENT FROM IIC UNIVERSITY OF TECHNOLOGY CAMBODIA, AN MBA FROM CARDIFF METROPOLITAN UNIVERSITY (UK), AND IS A CHEMICAL ENGINEER. DR. VAAS ALSO POSSESSES A LEAN SIX SIGMA BLACK BELT AND IS A CERTIFIED GRI STANDARDS PROFESSIONAL AS WELL AS A LEAD AUDITOR FOR ISO 14001. IN ADDITION, SHE SERVES AS A VISITING LECTURER IN SUSTAINABILITY AT THE FACULTY OF ENGINEERING, UNIVERSITY OF MORATUWA, SRI LANKA.



LAUREN JUNESTRAND UKFT

LAUREN IS THE INNOVATION AND SUSTAINABILITY NETWORK MANAGER AT UKFT, LEADING ON INITIATIVES ON CIRCULAR BUSINESS MODELS, SUSTAINABLE MANUFACTURING AND RECYCLING INFRASTRUCTURE IN THE UK. AS PART OF HER PHD STUDY, LAUREN IS CONDUCTING A REPRESENTATIVE INVESTIGATION OF SECOND-HAND FASHION CONSUMER MARKETS EXPLORING THE MAIN MOTIVATIONS AND BARRIERS ENCOUNTERED BY CONSUMERS ENGAGING AND NOT ENGAGING WITH SECOND-HAND FASHION AND THE POTENTIAL RELATIONSHIP OF THIS BEHAVIOUR WITH SOCIO-CULTURAL CONTEXTS.



MASHAL CHAUDHRI AND WEAVERS

HANDWEAVER AND TEXTILE RESEARCHER

MASHAL CHAUDHRI IS A TEXTILE PRACTITIONER, EDUCATOR, AND TRAINEE HUMANISTIC COUNSELLOR BASED IN KARACHI. SHE WORKS WITH CRAFT AS A LIBERATING, DECOLONISING PEDAGOGY, AND AS A SOURCE OF JOY. HER PRACTICE BRINGS TOGETHER HANDWEAVING, SPINNING, STITCHING, GROWING FIBER FROM SEED, AND OTHER HERITAGE TEXTILE TRADITIONS AS FORMS OF EMBODIED KNOWLEDGE AND RELATION. SHE LEADS WORKSHOPS ON WEAVING, HANDSPINNING AND STITCH AS REPARATIVE COMMUNAL PRACTICES, WITH A FOCUS ON INTERGENERATIONAL TRANSMISSION AND HEALING. MASHAL'S EARLIER EXPERIENCE FOUNDING AN EDUCATION SOCIAL ENTERPRISE INFORMS HER PARTICIPATORY, PROCESS-LED APPROACH. DRAWING ON HER TRAINING IN MEDITATION AND COUNSELLING, SHE INTEGRATES SOMATIC AWARENESS AND PERSON-CENTRED PRINCIPLES TO CREATE GROUNDED SPACES FOR COLLECTIVE LEARNING AND REPAIR. MASHAL HOLDS AN MA IN TEXTILES FROM THE ROYAL COLLEGE OF ART AND COMPLETED HER UNDERGRADUATE STUDIES AT GEORGETOWN UNIVERSITY. SHE IS A MEDITATION TEACHER CERTIFIED BY THE TWO-YEAR MINDFULNESS MEDITATION TEACHER CERTIFICATION PROGRAM (MMTCP) WITH TARA BRACH AND JACK KORNFIELD.



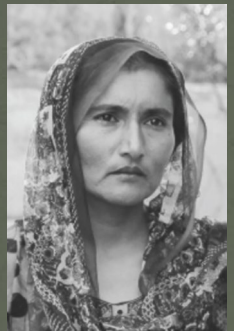
MUBARIK ALI MASTER ARTISAN

MUBARIK ALI IS A MASTER WEAVER WITH OVER 21 YEARS OF EXPERIENCE. AS A MEMBER OF THE ANSARI COMMUNITY, WEAVING HAS BEEN PART OF HIS FAMILY HERITAGE FOR GENERATIONS, AND IT REMAINS AT THE CENTRE OF HIS OWN LIFE'S WORK. MUBARIK'S PRACTICE IS ROOTED IN BOTH TRADITION AND INNOVATION; HE HAS SPENT DECADES HONING HIS SKILLS ON THE LOOM WHILE EXPLORING NEW POSSIBILITIES WITHIN THE CRAFT. DEEPLY DRAWN TO THE TECHNICAL ASPECTS OF ANY PROBLEM, HE FINDS JOY IN WORKING WITH HIS HANDS, EXPLORING THE MECHANICS OF THE LOOM, AND SOLVING THE COMPLEX PROBLEMS THAT WEAVING PRESENTS. FOR 11 YEARS, HE HAS TAUGHT AND LED THE WEAVING LAB AT THE PAKISTAN INSTITUTE OF FASHION AND DESIGN (PIFD), WHERE HE GUIDES STUDENTS IN DEVELOPING A DEEP RESPECT FOR MATERIAL, PROCESS, AND PRECISION. MUBARIK'S WORK REFLECTS A LIFELONG DEDICATION TO WEAVING AS BOTH HERITAGE AND LIVING PRACTICE, BRIDGING ANCESTRAL KNOWLEDGE WITH CONTEMPORARY DESIGN EDUCATION. HE STANDS AS A VITAL CUSTODIAN OF PAKISTAN'S TEXTILE TRADITIONS.



MASHAL KHAN KAARVAN CRAFTS FOUNDATION

AS A DESIGN STRATEGIST AND VISUAL ETHNOGRAPHER, MASHAL KHAN BLENDS STORYTELLING AND SYSTEMS THINKING TO CREATE SOCIAL IMPACT. SHE LEADS STRATEGIC COMMUNICATIONS, LEARNING, SHARING & INNOVATION AT KAARVAN CRAFTS FOUNDATION, WHERE SHE USES HUMAN-CENTERED DESIGN TO AMPLIFY WOMEN'S VOICES AND REIMAGINE EMPOWERMENT. WITH GLOBAL EXPERIENCE AT BOOZ ALLEN HAMILTON AND DISCOVERY CHANNEL, SHE TRANSLATES COMPLEX CHALLENGES INTO ACCESSIBLE IDEAS. AT KAARVAN, SHE BUILDS NARRATIVES THAT HONOR THE DIGNITY OF CRAFT, FOSTERS COLLABORATIONS BETWEEN GLOBAL AND LOCAL COMMUNITIES, AND CREATES SPACES WHERE WOMEN'S STORIES SPARK COLLECTIVE CHANGE.



MUMTAZ MAI KARVAAN CRAFTS FOUNDATION

MUMTAZ MAI'S STORY BEGINS IN GOTH LAL, NEAR BAHAWALPUR. MARRIED YOUNG, SHE STEPPED INTO RESPONSIBILITY WITH QUIET STRENGTH—CULTIVATING SUGARCANE AND LIVESTOCK ALONGSIDE HER MOTHER WHILE KEEPING ALIVE THE BEAUTY OF RALLI EMBROIDERY. HER WORK BLENDS HAND-DYED FABRICS INTO BOLD PATTERNS, BROUGHT TO LIFE WITH VIBRANT STITCHES. UNDER HER ROOF, FARMING AND DESIGN CO-EXIST, EACH CROP AND MOTIF A TESTAMENT TO HER RESOLVE TO BUILD WITH BOTH STRENGTH AND GRACE. LOOKING AHEAD, MUMTAZ DREAMS OF EXPANDING HER EMBROIDERY ENTERPRISE—PARTNERING WITH AN ESTABLISHED BRAND SO HER INTRICATE RALLI PATTERNS CAN JOURNEY FAR BEYOND HER VILLAGE, CARRYING THE STORY OF HER COURAGE AND CRAFT.



NAZISH HUSSAIN SECRET STASH

NAZISH HUSSAIN IS THE FOUNDER OF SECRET STASH, PAKISTAN'S LEADING ONLINE LUXURY RE-COMMERCE FASHION PLATFORM. OVER THE PAST DECADE, SHE HAS BUILT SECRET STASH INTO ONE OF THE MOST TRUSTED BRANDS IN THE COUNTRY'S ONLINE THRIFTING SPACE. SHE IS A RECIPIENT OF THE BRITISH COUNCIL PAKISTAN'S SUSTAINABLE FASHION GRANT AND WAS SELECTED FOR THE PRESTIGIOUS ALIBABA-UNCTAD EFOUNDERS FELLOWSHIP, WHICH SUPPORTS HIGH-IMPACT DIGITAL ENTREPRENEURS IN EMERGING MARKETS. BEFORE HER ENTREPRENEURIAL JOURNEY, NAZISH SPENT SEVEN YEARS IN THE CORPORATE SECTOR WITH UNILEVER AND STARCOM, DRIVING MEDIA, DIGITAL MARKETING, AND BRAND COMMUNICATIONS FOR REGIONAL AND GLOBAL BRANDS. SHE IS ALSO A CERTIFIED COACH AND MASTER PRACTITIONER OF NLP (NEURO-LINGUISTIC PROGRAMMING).



PAARAS ABBAS ANTHROPOLOGIST AND TEXTILE ARTIST

PAARAS ABBAS IS AN ANTHROPOLOGIST AND TEXTILE ARTIST WHOSE PRACTICE INVOLVES ETHNOGRAPHIC WRITING, AND ZERO-WASTE METHODS LIKE PROCESSING DYES FROM FOOD WASTE AND FORAGED PLANTS, AND USING A RANGE OF TECHNIQUES TO WORK ON DYED FABRIC, INCLUDING PATCHWORK, EMBROIDERY, AND PRINTING ORIGINAL ILLUSTRATIONS CARVED IN LINO AND HANDCARVED WOODEN BLOCKS SOURCED FROM BHIT SHAH, IN SINDH.



RACHEL SINGER RELONDON

RACHEL LEADS RELONDON'S WORK ON TEXTILES AND ELECTRICALS. AS PART OF THE SECTOR SUPPORT TEAM, RACHEL ALSO PROVIDES SUPPORT ON KEY DATA-DRIVEN PROJECTS AS PART OF THE ORGANISATION'S KNOWLEDGE STRATEGY TO HELP INFORM POLICIES AND ACTIVITIES THAT CONTRIBUTES TOWARDS REDUCING CONSUMPTION-BASED EMISSIONS.



RIZWANA JAMIL KARVAAN CRAFTS FOUNDATION

IN 2019, AMID THE UPHEAVAL OF COVID, RIZWANA JAMIL LOOKED AT HER CHILDREN AND KNEW SHE HAD TO ACT. WITH HER HUSBAND OUT OF WORK AND BILLS MOUNTING, SHE TOOK A LEAP OF FAITH AND STARTED HER ENTERPRISE. WHAT STARTED AS A NECESSITY QUICKLY BECAME A LIVELIHOOD. WITH COURAGE AND PERSISTENCE, RIZWANA TURNED HER SKILLS INTO A BUSINESS THAT NOW SUSTAINS HER HOUSEHOLD. TODAY, SHE HAS MOVED BEYOND SURVIVAL—CRAFTING CUSTOMIZED ORDERS FOR BRANDS AND DESIGNERS, PROVING THAT RESILIENCE CAN GROW INTO OPPORTUNITY AND RECOGNITION.



SALEEMA J. KHAWAJA MUSIC ARTIST

SALEEMA J. KHAWAJA FROM LAHORE, PAKISTAN IS A LAWYER BY PROFESSION. HER MAIN FOCUS HAS BEEN PUNJABI FOLK SINGING. SHE HAS BEEN LEARNING TO SING SINCE A YOUNG AGE AND BECAME MORE FOCUSED ON PUNJABI FOLK IN THE LATER YEARS. SHE STARTED ATTENDING THE SANGAT BY THE LATE SAMINA HASAN SYED AND NAJM HOSAIN SYED, WHERE THE WORKS OF REGIONAL POETS AND NAJM HOSAIN SYED ARE STUDIED AND SUNG TO DATE. SHE HAS LEARNED SINGING OF THE POETRY OF KHAWAJA GHULAM FAREED IN THE KAAFI TRADITION FROM RIAZ ALI QADRI AND IN LATE 2007/2008 SHE STARTED LEARNING GURBANI KEERTAN (COMPOSITIONS OF KALAM FROM THE GRANTH SAHIB) FROM BHAI GHULAM MUHAMMAD CHAND BELONGING TO THE RABABI TRADITION AND REMAINED HIS STUDENT TILL SHORTLY BEFORE HIS DEATH IN APRIL 2015. SHE IS A MEMBER OF THE SINGING GROUP HARSAKHIYAN AND HAS RECENTLY CONTRIBUTED TO THE 24 PART DOCUSERIES 'ALLEGORY: A TAPESTRY OF GURU NANAK'S TRAVELS' BY COMPOSING AND SINGING SELECTED VERSES FROM THE SRI GURU GRANTH SAHIB FOR THE SERIES.



SANA NAQVI TEXTILE ARTIST AND EDUCATOR

SANA IS DEEPLY PASSIONATE ABOUT TEXTILES AND ART EDUCATION. SHE EARNED HER BACHELOR'S DEGREE IN TEXTILE DESIGN FROM KARACHI UNIVERSITY IN 2009. WITH A DECADE OF EXPERIENCE IN BOTH INDUSTRY AND ACADEMIA, SHE COMPLETED HER MPHIL IN ART AND DESIGN FROM THE INDUS VALLEY SCHOOL OF ART AND ARCHITECTURE IN 2024. HER WORK HAS BEEN EXHIBITED AT KARACHI REELS AT THE ARTS COUNCIL (2024), AND HER ESSAY, TAARKASHI - DRAWING MATRILINEAL THREADS, WAS DIGITALLY PUBLISHED BY THE MUSEUM OF MATERIAL MEMORY. SHE CURRENTLY SERVES AS THE DEPUTY MANAGER OF STUDENT RELATIONS AT IVS, TEACHES CRAFT DOCUMENTATION IN THE DEPARTMENT OF TEXTILE DESIGN, AND LEADS A SHORT COURSE IN DIGITAL TEXTILE DESIGN AS PART OF THE CONTINUING EDUCATION PROGRAM. SANA TRACES HER GREAT-GRANDMOTHER'S LETTERS AND TAARKASHI WORK TO ADDRESS IDEAS OF TRANSFERENCE, EXPLORING HOW EMOTIONAL BURDENS AND IMPRINTS ARE PASSED DOWN AND LEAVE A LASTING IMPACT ON FUTURE GENERATIONS. AS A MIXED-MEDIA ARTIST, SHE IS PARTICULARLY DRAWN TO MATERIALS WITH FRAGILE, TRANSITIONAL QUALITIES, USING THEM TO GIVE FORM AND MEANING TO HER IDEAS. NAQVI'S WORK EXPLORES THE VISCERAL, SENSORY, AND SYMBOLIC MEANINGS INHERENT IN MATERIAL OBJECTS. IT SERVES AS A MEDIUM FOR PHILOSOPHICAL INQUIRY INTO INTERGENERATIONAL TRAUMA AND THE SILENT WEIGHT OF PATRIARCHAL NEGLECT. THROUGH THIS LENS, PATRIARCHAL SYSTEMS ARE REVEALED AS PARASITIC FORCES WITH DEEP, OFTEN UNSEEN CONSEQUENCES. CENTRAL TO THIS EXPLORATION IS NEEDLEWORK—TAARKASHI—CELEBRATED AS A TACTILE, CULTURAL THREAD THAT BINDS INDIVIDUALS ACROSS BOUNDARIES, EMBODYING RESILIENCE, CONNECTION, AND SHARED NARRATIVES.



SABAHAT BOKHARI THE INCLUSION LAB

SABAHAT KHURRAM BOKHARI IS THE FOUNDER & CEO OF THE INCLUSION LAB, A THOUGHT-LEADER IN INCLUSIVE LEADERSHIP, ESG, AND CLIMATE JUSTICE ACROSS PAKISTAN, THE GCC, AND GLOBAL FORUMS. SHE HAS REPRESENTED PAKISTAN INTERNATIONALLY AS A KEYNOTE SPEAKER AT PLATFORMS SUCH AS GSMA MWC BARCELONA, THE DIGITAL NATION SUMMIT, AND UNICEF DIALOGUES, WHILE ADVISING LEADING ORGANIZATIONS ON EMBEDDING DIVERSITY, EQUITY, INCLUSION, AND SUSTAINABILITY INTO THEIR STRATEGIES. THROUGH HER PROPRIETARY FRAMEWORKS LIKE SCULPT™ AND INCLUSIA™, SHE BRIDGES POLICY, BUSINESS, AND CLIMATE ACTION TO POSITION INCLUSION NOT JUST AS A COMPLIANCE REQUIREMENT, BUT AS A DRIVER OF RESILIENCE AND GLOBAL COMPETITIVENESS.



UMAIR AHMED SIDDIQUI TEXTILES INSTITUTE PAKISTAN

AS A CONSULTANT IN SUSTAINABLE FASHION DESIGN, I HAVE STRONG EXPERTISE IN THE GLOBAL TEXTILE MARKET AND SUSTAINABLE SOURCING. WITH A NETWORK OF RELIABLE SUPPLIERS AND DEEP KNOWLEDGE OF PRODUCTION PROCESSES, I DELIVER HIGH-QUALITY, COST-EFFECTIVE SOLUTIONS. I COMBINE STRATEGIC THINKING, STRONG NEGOTIATION SKILLS, AND A KEEN EYE FOR DETAIL TO SUPPORT RESPONSIBLE AND IMPACTFUL FASHION PRACTICES.



WASEEM AKHTAR KHAN COTTON WEB

AMNEH SHAIKH-FAROOQUI IS A SOCIAL ENTREPRENEUR, FACILITATOR, AND SUSTAINABILITY ADVOCATE WORKING AT THE INTERSECTION OF GENDER EQUALITY, DECOLONIZATION, AND CULTURAL DESIGN. FOR OVER TWO DECADES, SHE HAS HELPED SHAPE PAKISTAN'S IMPACT SECTOR, LEADING INITIATIVES IN WOMEN'S EMPOWERMENT, ENTREPRENEURSHIP, CLIMATE ACTION, CULTURAL HERITAGE, AND SUSTAINABLE MAKING. HER FACILITATION PRACTICE FOCUSES ON TRANSFORMATIVE LEARNING, PARTICIPATORY DESIGN, AND CONVENING COURAGEOUS CONVERSATIONS THAT SURFACE MARGINALISED NARRATIVES, CENTRE INDIGENOUS VOICES, AND TURN STORYTELLING INTO STRATEGY FOR CHANGE AND BUILDING INCLUSIVE FUTURES. AS CHAIR AND CURATOR OF THE WOMEN OF THE WORLD FESTIVALS IN PAKISTAN, FOUNDER AND CEO OF POLLY AND OTHER STORIES, AND CHIEF STRATEGY OFFICER AT THE BLUE COMPANY, AMNEH CREATES SPACES FOR AUTHENTIC LEADERSHIP AND RADICAL CURIOSITY. SHE IS AN ACUMEN, MILLER CENTER, AND IVLP FELLOW, AND THE AUTHOR OF FEARLESS, A BOOK PROFILING 50 REMARKABLE PAKISTANI WOMEN.



ZAHRA HUSSAIN LAAJVERD

ZAHRA HUSSAIN IS AN ARCHITECT, CONSERVATOR AND CULTURAL GEOGRAPHER BASED IN PAKISTAN. SHE LEADS THE 'ACADEMY FOR DEMOCRACY' PROJECT THAT EXPLORES FORMS OF ENGAGEMENT WITH CHANGING LANDSCAPES. SHE HAS DEVELOPED THE CREATIVE PARTICIPATORY ACTION RESEARCH FRAMEWORK, WHICH INTEGRATES CRITICAL SPATIAL INVESTIGATIONS WITH THE STUDY OF COMPLEX SOCIAL ENTANGLEMENTS, GROUNDING RESEARCH IN CONTEXT AND ATTENDING TO BOTH HUMAN AND NON-HUMAN SUBJECTS. SHE HAS WRITTEN ABOUT 'ARCHITECTURE OF COUNTER-INSURGENCY' BY EXAMINING WAYS IN WHICH PAKISTANI URBAN SPACES RAPIDLY TRANSFORMED DUE TO CONFLICTS IN CRISIS IN THE DECADE OF 2000. HER RECENT WORK EXPLORES HERITAGE AND BELONGING IN THE HINDU KUSH HIMALAYA REGION, WHERE COMMUNITIES FACE THE COMBINED PRESSURES OF INFRASTRUCTURAL DEVELOPMENT AND CLIMATE CHANGE. HUSSAIN HAS CO-LED SEVERAL UKRI (UNITED KINGDOM RESEARCH INSTITUTES) FUNDED PROJECTS COMMITTED TO EXPLORING RESILIENCE AND ADAPTATION IN TIMES OF CLIMATE CRISIS AFFECTING THE CULTURAL LANDSCAPES IN SOUTH AND CENTRAL ASIA. SHE HAS CURATED AND PRESENTED EXHIBITIONS ACROSS SOUTH AND CENTRAL ASIA, EUROPE, AND NORTH AMERICA, INCLUDING IN LAHORE, ISLAMABAD, PESHAWAR, ISTANBUL, BISHKEK, TASHKENT, DUSHANBE, SURABAYA, LONDON, AND TORONTO.



ZEHRA SHALLWANI DASTAAN TOURS & CRAFTS PVT LTD

ZEHRRA SHALLWANI IS A SUSTAINABLE TOURISM AND CULTURAL HERITAGE ADVOCATE, FOUNDER OF DASTAAN TOURS PVT LTD, AND WINNER OF THE UK ALUMNI AWARD FOR CULTURE AND CREATIVITY (2025). SHE HOLDS AN MSC IN TOURISM, ENVIRONMENT, AND DEVELOPMENT FROM KING'S COLLEGE LONDON AND LEADS PROJECTS THAT MERGE ECO-TOURISM, CRAFT REVIVAL, AND COMMUNITY EMPOWERMENT IN PAKISTAN. HER WORK FOCUSES ON A NEXUS BETWEEN PRESERVING HERITAGE, PROMOTING GENDER INCLUSION, AND FOSTERING SUSTAINABLE DEVELOPMENT.



ZEIN AHMED LOVE HANDMADE

ZEIN AHMED IS A PIONEERING SOCIAL ENTREPRENEUR AND FOUNDER OF LOVE HANDMADE, A SOCIAL ENTERPRISE LAUNCHED EIGHT YEARS AGO TO EMPOWER RURAL CRAFTSWOMEN IN PAKISTAN THROUGH SUSTAINABLE CRAFT. WITH OVER 30 YEARS OF EXPERIENCE IN DESIGN, SUSTAINABILITY, AND WOMEN'S ECONOMIC EMPOWERMENT, SHE HAS CHAMPIONED ETHICAL FASHION FROM LAHORE TO NEW YORK, WHERE SHE LAUNCHED HER ECO-CONSCIOUS LABEL GURU. ZEIN BRIDGES TRADITIONAL CRAFT AND GLOBAL FASHION MARKETS WITH CULTURAL INSIGHT AND COMMERCIAL EXPERTISE. HER WORK HAS BEEN FEATURED IN FORBES, VOGUE, OPRAH MAGAZINE, AND THE NEW YORK TIMES, REFLECTING HER IMPACT ON THE GLOBAL SLOW FASHION MOVEMENT.